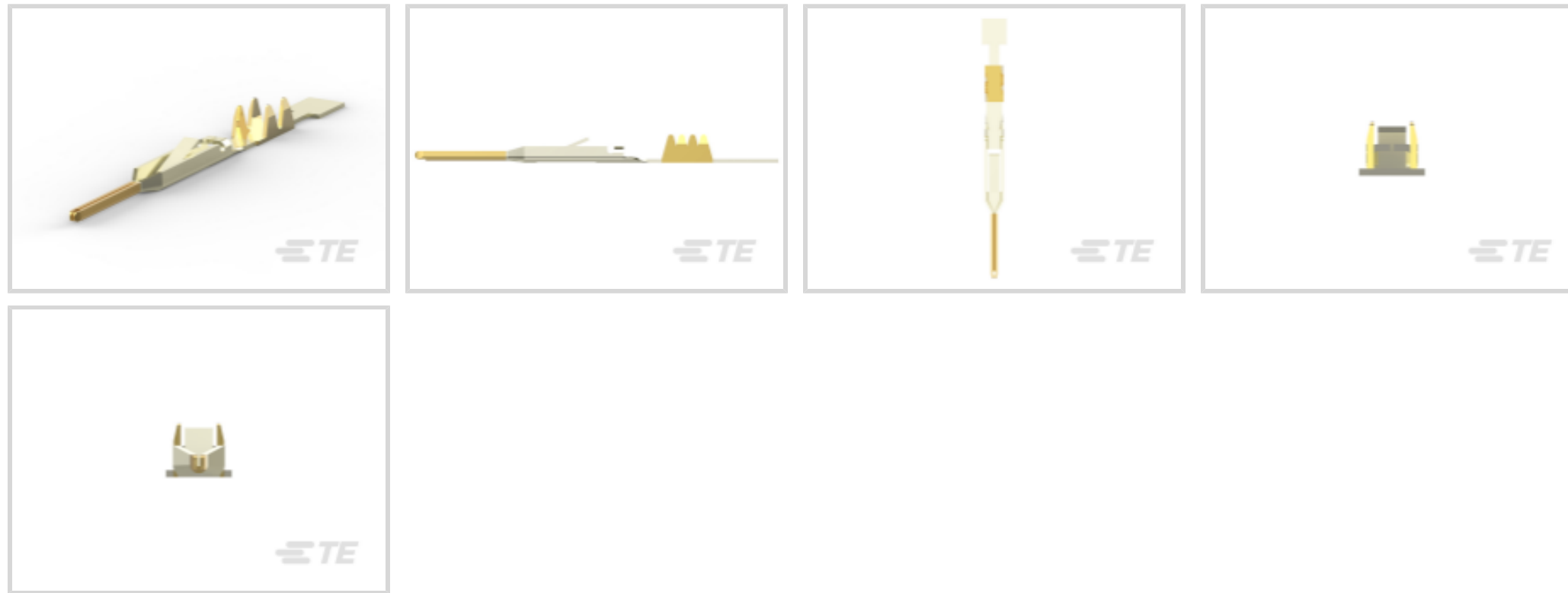


TE Internal #: 88117-9
 Pin Contact, Gold (Au) / Gold Flash over Palladium Nickel, FFC,
 Insulation Displacement (IDC), Phosphor Bronze, Signal, -65 – 105 °
 C [-85 – 221 °F]

[View on TE.com >](#)



Connectors > Contacts > Connector Contacts > 2.54mm FFC Connectors Pin Contacts



Contact Type: **Pin**

Contact Mating Area Plating Material: **Gold (Au), Gold Flash over Palladium Nickel**

Compatible With Wire & Cable Type: **FFC**

Termination Method to Wire & Cable: **Insulation Displacement (IDC)**

Contact Base Material: **Phosphor Bronze**

[All 2.54mm FFC Connectors Pin Contacts \(34\)](#)

Features

Configuration Features

Compatible With Wire & Cable Type	FFC
-----------------------------------	-----

Contact Features

Contact Underplating Material	Nickel
PCB Contact Termination Area Plating Material	Gold Flash
	15 µin
Contact Type	Pin
Contact Mating Area Plating Material	Gold (Au), Gold Flash over Palladium Nickel
Contact Base Material	Phosphor Bronze
Contact Current Rating (Max)	2 A

Termination Features

Termination Method to Wire & Cable	Insulation Displacement (IDC)
Product Terminates To	Wire & Cable

Dimensions



Accepts Conductor Width	1.27 mm[.05 in]
-------------------------	-----------------

Usage Conditions

Operating Temperature Range	-65 – 105 °C[-85 – 221 °F]
-----------------------------	----------------------------

Operation/Application

Circuit Application	Signal
---------------------	--------

Packaging Features

Packaging Method	Reel
------------------	------

Product Compliance

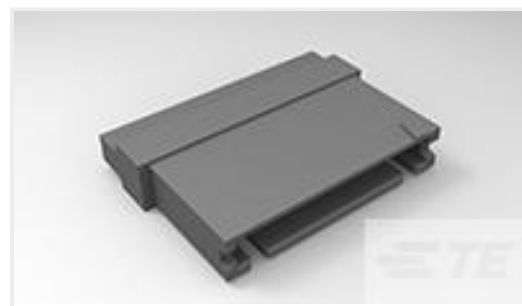
[For compliance documentation, visit the product page on TE.com>](#)

EU RoHS Directive 2011/65/EU	Compliant
EU ELV Directive 2000/53/EC	Compliant
China RoHS 2 Directive MIIT Order No 32, 2016	No Restricted Materials Above Threshold
EU REACH Regulation (EC) No. 1907/2006	Current ECHA Candidate List: JAN 2025 (247) Candidate List Declared Against: JAN 2025 (247) Does not contain REACH SVHC
Halogen Content	Low Halogen - Br, Cl, F, I < 900 ppm per homogenous material. Also BFR/CFR/PVC Free
Solder Process Capability	Reflow solder capable to 260°C

Product Compliance Disclaimer

This information is provided based on reasonable inquiry of our suppliers and represents our current actual knowledge based on the information they provided. This information is subject to change. The part numbers that TE has identified as EU RoHS compliant have a maximum concentration of 0.1% by weight in homogenous materials for lead, hexavalent chromium, mercury, PBB, PBDE, DBP, BBP, DEHP, DIBP, and 0.01% for cadmium, or qualify for an exemption to these limits as defined in the Annexes of Directive 2011/65/EU (RoHS2). Finished electrical and electronic equipment products will be CE marked as required by Directive 2011/65/EU. Components may not be CE marked. Additionally, the part numbers that TE has identified as EU ELV compliant have a maximum concentration of 0.1% by weight in homogenous materials for lead, hexavalent chromium, and mercury, and 0.01% for cadmium, or qualify for an exemption to these limits as defined in the Annexes of Directive 2000/53/EC (ELV). Regarding the REACH Regulation, the information TE provides on SVHC in articles for this part number is based on the latest European Chemicals Agency (ECHA) 'Guidance on requirements for substances in articles' posted at this URL: <https://echa.europa.eu/guidance-documents/guidance-on-reach>

Compatible Parts



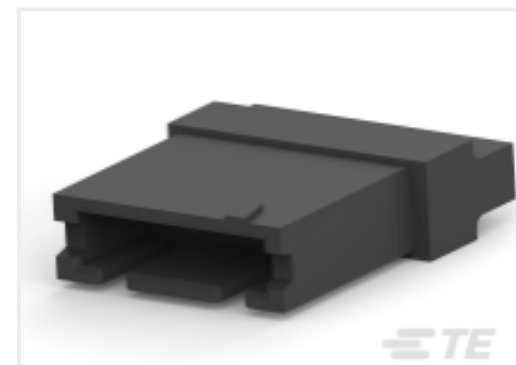
TE Part # 1-485893-2
014 HOUSING FFC PIN 100CL SR



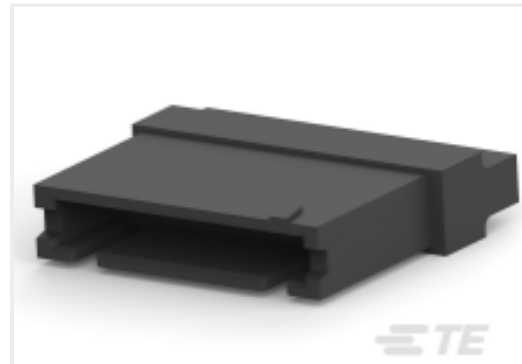
TE Part # CAT-F439-P65254
2.54mm FFC Connectors Pin Contacts



TE Part # 1-88189-0
026 HOUSING FFC PIN DR 100CL



TE Part # 485893-3
005 HOUSING FFC PIN 100CL SR



TE Part # 485893-6
008 HOUSING FFC PIN 100CL SR



TE Part # 485893-5
007 HOUSING FFC PIN 100CL SR



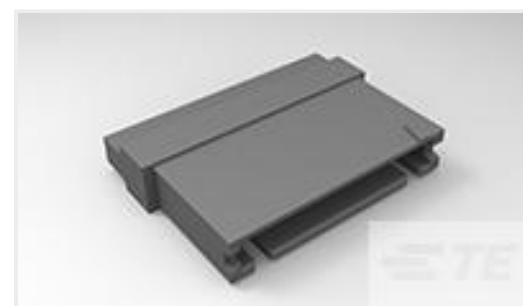
TE Part # 485893-9
011 HOUSING FFC PIN 100CL SR



TE Part # 3-88190-4
016 HOUSING FFC PIN DR 100CL



TE Part # 1-88190-0
024 HOUSING FFC PIN DR 100CL



TE Part # 1-485893-8
020 HOUSING FFC PIN 100CL SR



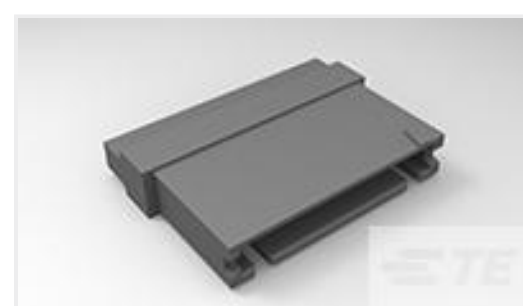
TE Part # 1-485893-0
012 HOUSING FFC PIN 100CL SR



TE Part # 1-485893-4
016 HOUSING FFC PIN 100CL SR



TE Part # 485800-5
FFC,CARD EDGE CONTACT



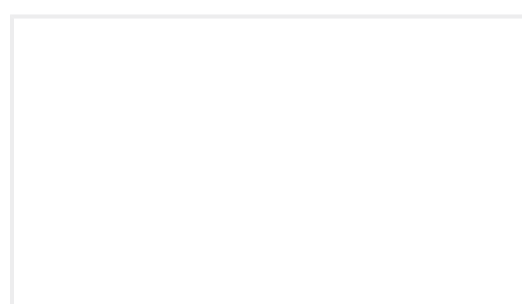
TE Part # 1-485893-6
018 HOUSING FFC PIN 100CL SR



TE Part # 3-88190-2
006 HOUSING FFC PIN DR 100CL



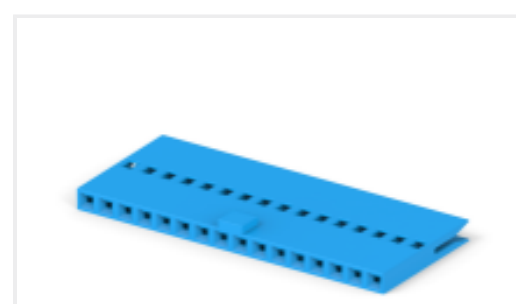
TE Part # 1-88190-8
040 HOUSING FFC PIN DR 100CL



TE Part # 5-528441-5
APPLIC. FFC-MODU.100



TE Part # 1-88190-2
026 HOUSING FFC PIN DR 100CL

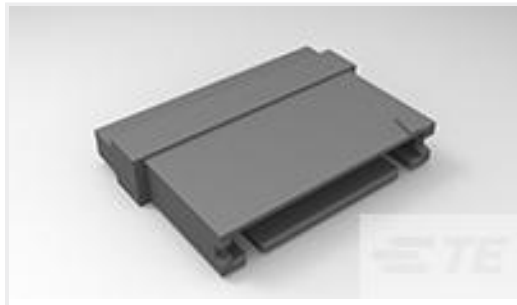


TE Part # CAT-F439-S01339254
2.54mm FFC Connectors Socket Contacts

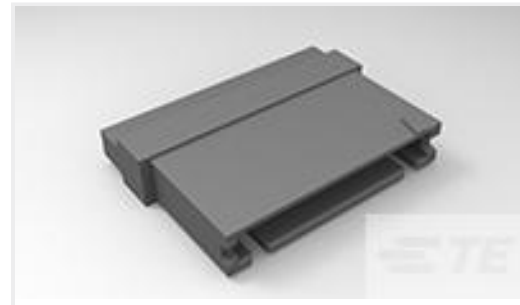


TE Part # 1-485893-3
015 HOUSING FFC PIN 100CL SR

Customers Also Bought



TE Part #1-485893-1
013 HOUSING FFC PIN 100CL SR



TE Part #485893-8
010 HOUSING FFC PIN 100CL SR



TE Part #6-487937-0
060 HOUSING FFC 50CL DR LATCH



TE Part #321876
TERMINAL,SOLIS R 3/0 7/16



TE Part #102107-1
MOD IV PIN LP



TE Part #53242-2
PG SPR SPD 22-16COM22-18MIL 10



TE Part #794192-1
08P MINI UMNL2 PLUG HSG UL94V0



TE Part #487406-1
FFC RCPT CONT SP 15AU RL



TE Part #CAT-F439-R2435254
2.54mm FFC Connectors Receptacle Housing

Documents

Product Drawings

[FFC PIN CONT 15AU RL](#)

English

CAD Files

Customer View Model

[ENG_CVM_CVM_88117-9_AZ.2d_dxf.zip](#)

English

3D PDF

3D

Customer View Model

[ENG_CVM_CVM_88117-9_AZ.3d_igs.zip](#)

English

Customer View Model

[ENG_CVM_CVM_88117-9_AZ.3d_stp.zip](#)

English

By downloading the CAD file I accept and agree to the [Terms and Conditions](#) of use.

Product Specifications



[Application Specification](#)

English

[Application Specification](#)

English

[Instruction Sheets](#)

[Instruction Sheet \(U.S.\)](#)

English