

794407-1 ✓ ACTIVE

MATE-N-LOK | Mini-Universal MATE-N-LOK

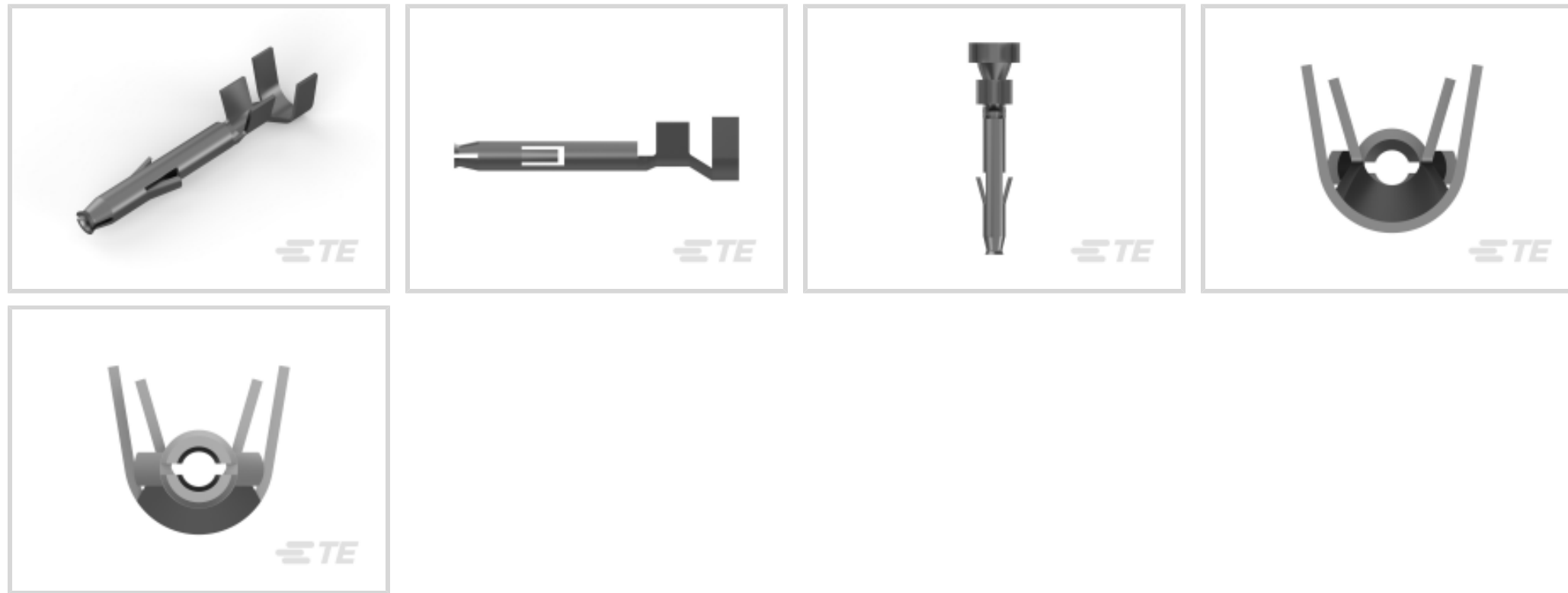
TE Internal #: 794407-1

Socket Contact, Tin (Sn), 600 VAC, 600 VDC, 20 – 16 AWG, .5 – 1.4 mm² Wire, Crimp, Brass, Power, Mini-Universal MATE-N-LOK

[View on TE.com >](#)



Connectors > Contacts > Connector Contacts



Contact Type: **Socket**

Contact Mating Area Plating Material: **Tin (Sn)**

Wire Contact Termination Area Plating Material: **Pre-Tin**

Operating Voltage: **600 VDC**

Features

Product Type Features

Discrete Wire Type	Stranded
--------------------	----------

Electrical Characteristics

Operating Voltage	600 VDC
-------------------	---------

Contact Features

Contact Orientation	Straight
Mating Pin Diameter	1 mm [.039 in]
Wire Contact Termination Area Plating Material Finish	Bright
Wire Contact Termination Area Plating Thickness	2.54 – 6.35 µm [100 – 250 µin]
Contact Type	Socket
Contact Mating Area Plating Material	Tin (Sn)
Wire Contact Termination Area Plating Material	Pre-Tin
Contact Retention Within Housing	With
Contact Base Material	Brass
Contact Current Rating (Max)	11.2 A

Termination Features



Termination Method to Wire & Cable	Crimp
------------------------------------	-------

Product Terminates To	Wire & Cable
-----------------------	--------------

Mechanical Attachment

Wire Insulation Support	Without
-------------------------	---------

Dimensions

Compatible Insulation Diameter Range	2 – 3.2 mm [.079 – .126 in]
--------------------------------------	-----------------------------

Wire Size	.5 – 1.4 mm ²
-----------	--------------------------

Usage Conditions

Operating Temperature Range	-55 – 105 °C [-67 – 221 °F]
-----------------------------	-----------------------------

Operation/Application

Circuit Application	Power
---------------------	-------

Industry Standards

Compatible With Agency/Standards Products	CSA, UL
---	---------

Packaging Features

Packaging Quantity	4500
--------------------	------

Packaging Method	Reel
------------------	------

Product Compliance

[For compliance documentation, visit the product page on TE.com>](#)

EU RoHS Directive 2011/65/EU	Compliant
------------------------------	-----------

EU ELV Directive 2000/53/EC	Compliant
-----------------------------	-----------

China RoHS 2 Directive MIIT Order No 32, 2016	No Restricted Materials Above Threshold
---	---

EU REACH Regulation (EC) No. 1907/2006	Current ECHA Candidate List: JAN 2025 (247) Candidate List Declared Against: JAN 2025 (247) Does not contain REACH SVHC
--	---

Halogen Content	Low Halogen - Br, Cl, F, I < 900 ppm per homogenous material. Also BFR/CFR/PVC Free
-----------------	---

Solder Process Capability	Not applicable for solder process capability
---------------------------	--

Product Compliance Disclaimer

This information is provided based on reasonable inquiry of our suppliers and represents our current actual knowledge based on the information they provided. This information is subject to change. The part numbers that TE has identified as EU RoHS compliant have a maximum concentration of 0.1% by weight in homogenous materials for lead, hexavalent

chromium, mercury, PBB, PBDE, DBP, BBP, DEHP, DIBP, and 0.01% for cadmium, or qualify for an exemption to these limits as defined in the Annexes of Directive 2011/65/EU (RoHS2). Finished electrical and electronic equipment products will be CE marked as required by Directive 2011/65/EU. Components may not be CE marked. Additionally, the part numbers that TE has identified as EU ELV compliant have a maximum concentration of 0.1% by weight in homogenous materials for lead, hexavalent chromium, and mercury, and 0.01% for cadmium, or qualify for an exemption to these limits as defined in the Annexes of Directive 2000/53/EC (ELV). Regarding the REACH Regulation, the information TE provides on SVHC in articles for this part number is based on the latest European Chemicals Agency (ECHA) 'Guidance on requirements for substances in articles' posted at this URL: <https://echa.europa.eu/guidance-documents/guidance-on-reach>

Compatible Parts



TE Part # 1-172233-2
2 POS MINI UNIV FREE HANG RED



TE Part # 1-172156-2
1 POS SR MINI UNIV



TE Part # 2836381-1
OCEAN_2.0_Applicator-S-080F110OV-RSM



TE Part # 1-172165-5
2CIR MINI U-M-N-L PLUG GREN



TE Part # 1-172338-4
MINI U-M-N-L PLUG 4P YELLOW



TE Part # 172168-1
6 CIR UNIV M-N-L PLUG



TE Part # 7-2836560-7
OC-070F130O-CRIMP TOOLING KIT



TE Part # 770581-1
12P MINI UMNL PLUG HSG



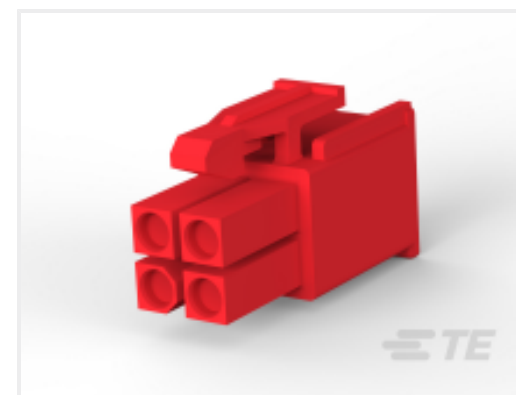
TE Part # 172234-1
3P MINI UNIVERSAL MATE-N-LOK
CAP HOUSING



TE Part # 172333-1
MINI UNIVERSAL M-N-L HOUSING



TE Part # 1-172157-9
2CIR MINI U-M-N-L CAP BLCK



TE Part # 1-172167-2
4 POS DR MINI UNIV



TE Part # 1-172171-9
15 POS TR MINI UNIV



TE Part # 1-172338-2
4CIR MINI-UMNL PLUG RED



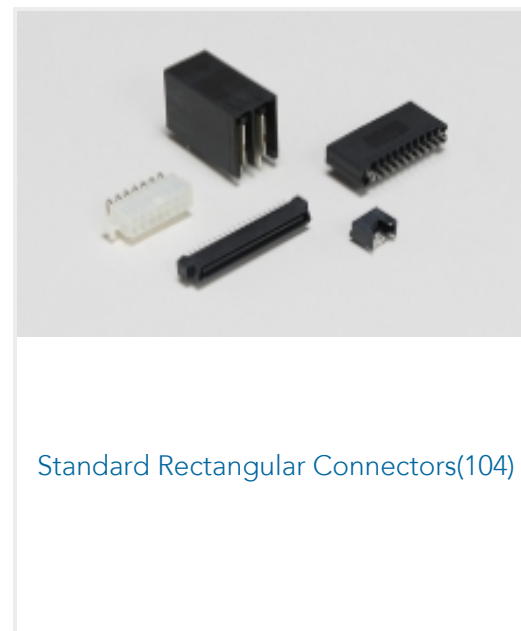
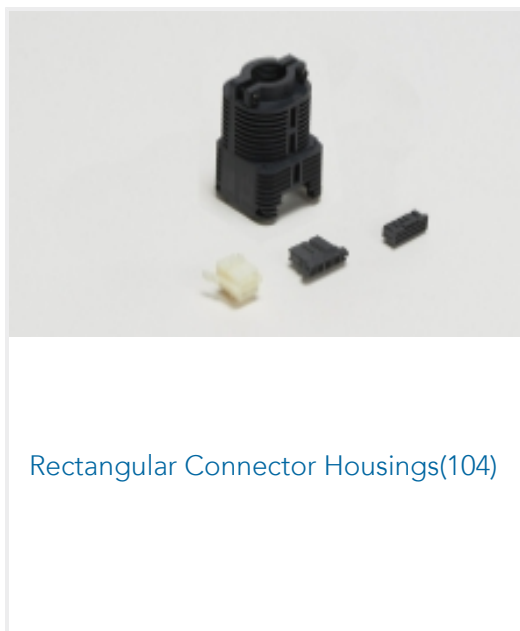
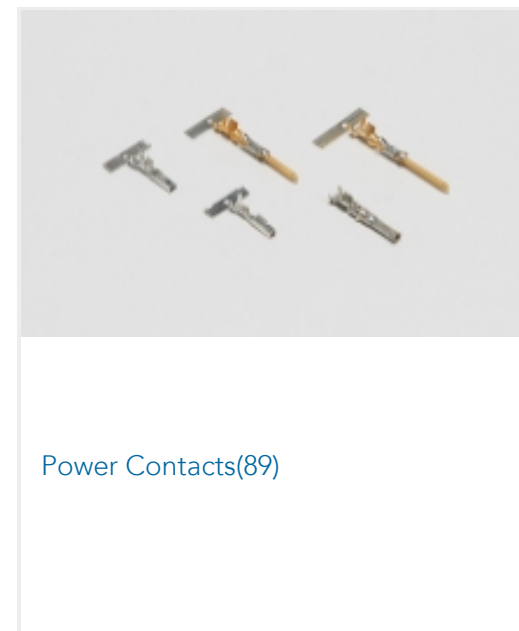
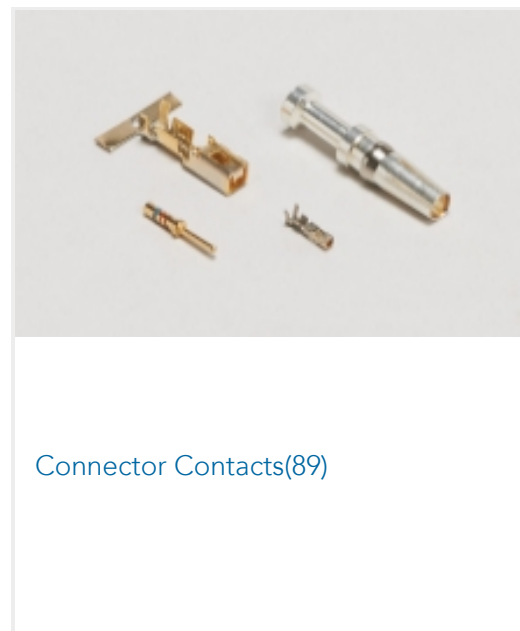
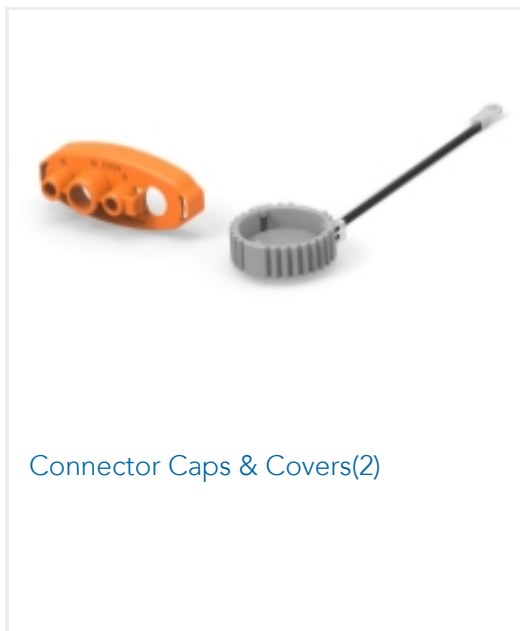
TE Part # 1-172167-9
4 POS SR MINI UNIV



TE Part # 189727-1
EXTRACTION TOOL



Also in the Series | Mini-Universal MATE-N-LOK



Customers Also Bought





Documents

CAD Files

[3D PDF](#)

3D

Customer View Model

[ENG_CVM_CVM_794407-1_F.2d_dxf.zip](#)

English

Customer View Model

[ENG_CVM_CVM_794407-1_F.3d_igs.zip](#)

English

Customer View Model

[ENG_CVM_CVM_794407-1_F.3d_stp.zip](#)

English

By downloading the CAD file I accept and agree to the [Terms and Conditions](#) of use.

Datasheets & Catalog Pages

[SOFT_SHELL_PIN_AND_SOCKET_CONNECTORS_CATALOG](#)

English

[CIRCULAR_SEALED_LIGHTING_CONNECTOR](#)

English

Product Specifications

[Application Specification](#)

English