

61365-1 ✓ ACTIVE

FASTON | FASTON 250

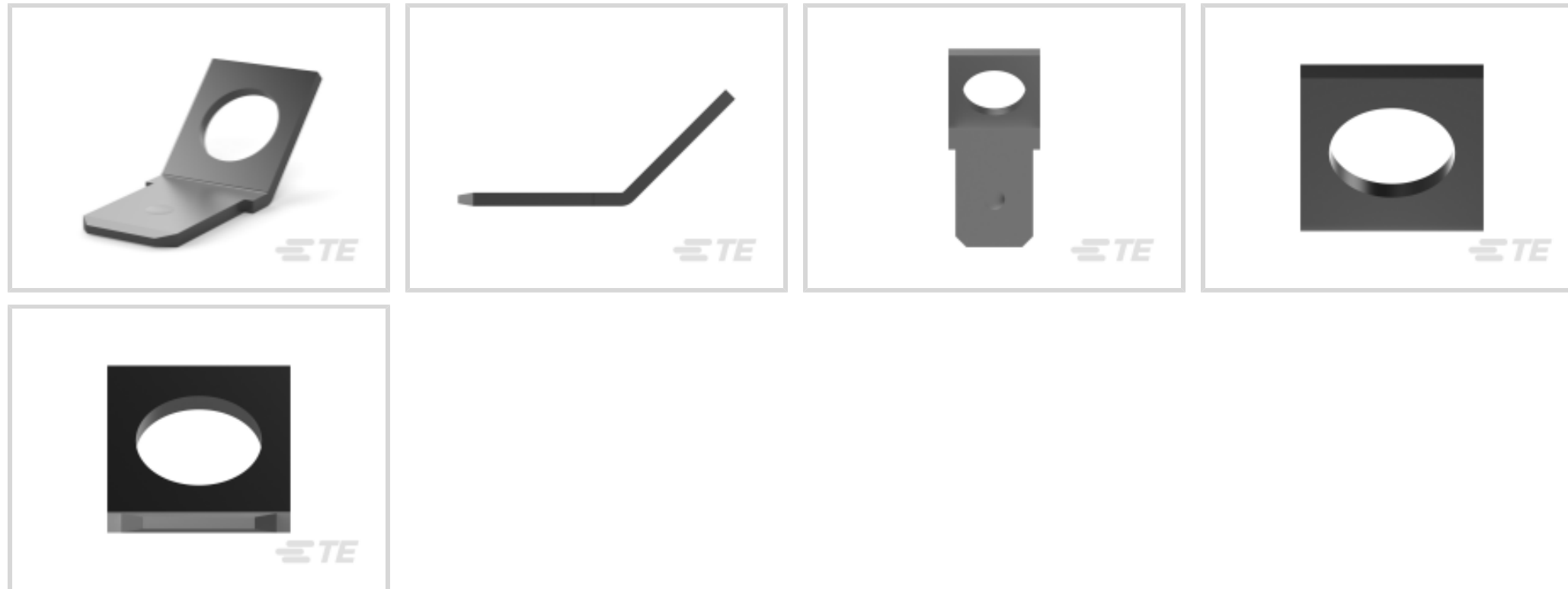
TE Internal #: 61365-1

Tab, 6.35 mm [.25 in] Tab Width, 5.16 mm [.203 in] PCB Hole,
Through Hole - Screw, Tin Plating, Bag, FASTON 250, PCB
Terminals

[View on TE.com >](#)



Terminals & Splices > PCB Terminals



PCB Terminal Type: **Tab**

Mating Tab Width: **6.35 mm [.25 in]**

Mating Tab Thickness: **.81 mm [.032 in]**

PCB Hole Diameter: **5.16 mm [.203 in]**

Profile Height from PCB: **7.48 mm [.295 in]**

Features

Product Type Features

Insertion Force	Normal
Terminal Features	Stud Hole

Contact Features

Contact Mating Area Plating Material Thickness	1.01 μm [40 μin]
PCB Contact Termination Area Plating Material Thickness	1.01 μm [40 μin]
Terminal Plating Finish	Matte
PCB Terminal Type	Tab
Mating Tab Width	6.35 mm[.25 in]
Mating Tab Thickness	.81 mm[.032 in]
Terminal Plating Material	Tin
Contact Underplating Material	None
Terminal Size	6.35
Terminal Orientation	45 Bend

Termination Features



Termination Method to PCB	Through Hole - Screw
---------------------------	----------------------

Product Terminates To	Printed Circuit Board
-----------------------	-----------------------

Dimensions

Stud Diameter	5.16 mm [.203 in]
---------------	-------------------

PCB Hole Diameter	5.16 mm [.203 in]
-------------------	-------------------

Profile Height from PCB	7.48 mm [.295 in]
-------------------------	-------------------

Usage Conditions

Insulation Option	Uninsulated
-------------------	-------------

Operating Temperature Range	-40 – 105 °C [-40 – 221 °F]
-----------------------------	-----------------------------

Industry Standards

Compatible With Agency/Standards Products	CSA, UL
---	---------

Packaging Features

Packaging Quantity	1000
--------------------	------

Packaging Method	Bag
------------------	-----

Product Compliance

[For compliance documentation, visit the product page on TE.com>](#)

EU RoHS Directive 2011/65/EU	Compliant
------------------------------	-----------

EU ELV Directive 2000/53/EC	Compliant
-----------------------------	-----------

China RoHS 2 Directive MIIT Order No 32, 2016	No Restricted Materials Above Threshold
---	---

EU REACH Regulation (EC) No. 1907/2006	Current ECHA Candidate List: JAN 2025 (247) Candidate List Declared Against: JAN 2025 (247) Does not contain REACH SVHC
--	---

Halogen Content	Low Halogen - Br, Cl, F, I < 900 ppm per homogenous material. Also BFR/CFR/PVC Free
-----------------	---

Solder Process Capability	Not applicable for solder process capability
---------------------------	--

Product Compliance Disclaimer

This information is provided based on reasonable inquiry of our suppliers and represents our current actual knowledge based on the information they provided. This information is subject to change. The part numbers that TE has identified as EU RoHS compliant have a maximum concentration of 0.1% by weight in homogenous materials for lead, hexavalent chromium, mercury, PBB, PBDE, DBP, BBP, DEHP, DIBP, and 0.01% for cadmium, or qualify for an exemption to these limits as defined in the Annexes of Directive 2011/65/EU (RoHS2). Finished electrical and electronic equipment products will be CE marked as required by Directive 2011/65/EU. Components may not be CE marked. Additionally, the part numbers that TE has identified as EU ELV compliant have a maximum concentration of 0.1% by weight in homogenous materials for lead, hexavalent chromium, and mercury, and 0.01% for cadmium, or qualify for an exemption to these limits

as defined in the Annexes of Directive 2000/53/EC (ELV). Regarding the REACH Regulation, the information TE provides on SVHC in articles for this part number is based on the latest European Chemicals Agency (ECHA) 'Guidance on requirements for substances in articles' posted at this URL: <https://echa.europa.eu/guidance-documents/guidance-on-reach>

Compatible Parts



TE Part # 181949-2
250 FASTON,TAB,TPBR



TE Part # 181948-2
250 FASTON,TAB,TPBR



TE Part # 42095-1
250 FASTON TAB TPBR



TE Part # 60080-2
250 FASTON TAB TPBR



TE Part # 63038-1
250 FASTON TAB TPBR



TE Part # 140736-2
250 FASTON,TAB,TPBR



TE Part # 61499-1
250 FASTON TAB TPBR



TE Part # 41480
250 FASTON TAB TPBR



TE Part # 62627-1
250 FASTON TAB TPST



TE Part # 1217002-1
250 FASTON,TAB, NPCST



TE Part # 63971-1
250 FASTON TAB TPBR



TE Part # 42117-2
250 FASTON TAB TPBR



TE Part # 160650-2
250 FASTON,PCB TAB,TNBR

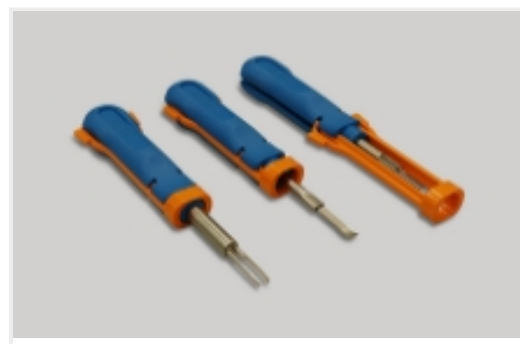
Also in the Series | **FASTON 250**



Compression Connectors(4)



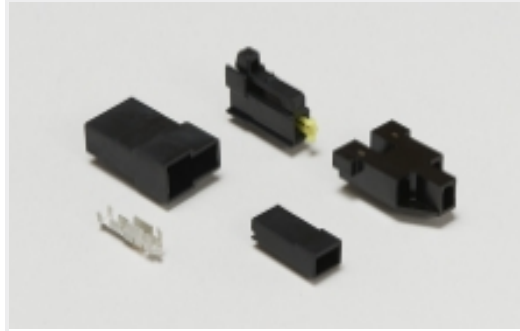
Crimp Terminal Housings(116)



Insertion & Extraction Tools(6)



Insulation Boots & Sleeves(16)



Magnet Wire Terminals(1)



PCB Terminals(134)

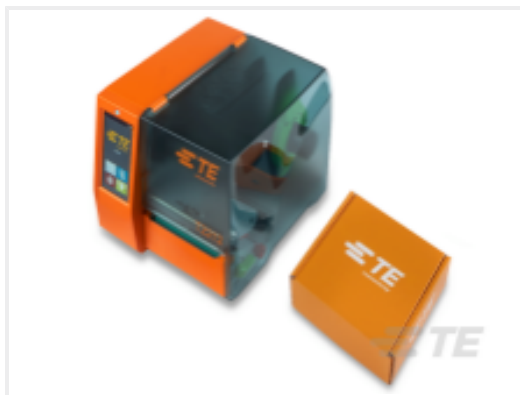


Quick Disconnects(421)



Splices(4)

Customers Also Bought



TE Part #1-2186528-1
T2212-SWARE-PRINTER



TE Part #770255-1
UMNII GROUND PIN LP 14-20



TE Part #7-1879140-3
RN 0603 105K 0.1% 10PPM 5K RL



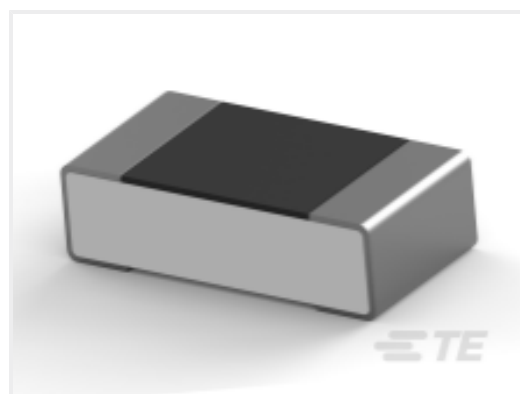
TE Part #61045-2
FASTON .187 SERIES (4.8 MM) TPBR



TE Part #2466287-1
BNC M STR CRIMP RG174 188 316
4GHZ 50OHM



TE Part #2330274-3
SSRDC-200D40 = Hokey Puck,40A,
200V DC



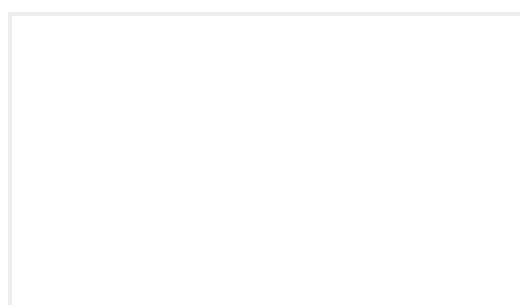
TE Part #4-2176367-0
RQ 0603 11K8 0.1% 10PPM 1K RL



TE Part #0600-00028
ANT,900MHZ,2.5DBI



TE Part #2-34150-1
PG R 22-16 COMM 22-18 MIL 1/4



TE Part #1-1634200-2
PREDD1-07F-BB0DW

Documents



Product Drawings

250 FASTON TAB TPBR

English

CAD Files

Customer View Model

[ENG_CVM_CVM_61365-1_G.2d_dxf.zip](#)

English

3D PDF

3D

Customer View Model

[ENG_CVM_CVM_61365-1_G.3d_igs.zip](#)

English

Customer View Model

[ENG_CVM_CVM_61365-1_G.3d_stp.zip](#)

English

By downloading the CAD file I accept and agree to the [Terms and Conditions](#) of use.

Datasheets & Catalog Pages

FASTON Tabs

English

Product Specifications

Application Specification

English

Agency Approvals

CSA Certificate

English

CSA Certificate

English