

5787082-2 ✓ ACTIVE

AMPLIMITE | AMPLIMITE 0.50 Series

TE Internal #: 5787082-2

26 Position D-Shaped Connector, Receptacle, Cable-to-Board,
Board Mount, 1.27 mm [.05 in] Centerline, Printed Circuit Board,
AMPLIMITE 0.50 Series

[View on TE.com >](#)



Connectors > D-Shaped Connectors > D-Sub Receptacle Assembly: Right Angle, 1.27mm



Number of Positions: **26**

Connector & Housing Type: **Receptacle**

Connector System: **Cable-to-Board**

Connector Mounting Type: **Board Mount**

Centerline (Pitch): **1.27 mm [.05 in]**

[All D-Sub Receptacle Assembly: Right Angle, 1.27mm \(74\)](#)

Features

Product Type Features

Shell Material Configuration	Full Metal Shell
Connector & Housing Type	Receptacle
Connector System	Cable-to-Board
Connector & Contact Terminates To	Printed Circuit Board

Configuration Features

PCB Mount Orientation	Right Angle
Number of Rows	4
Number of Positions	26

Body Features

Assembly Process Feature Material	Copper Alloy
Shell Plating Material	Nickel over Copper
Primary Product Color	Black



Connector Profile Standard

Contact Features

Contact Underplating Material Palladium Nickel

30 μ m

Contact Mating Area Plating Material Gold (Au)

Contact Base Material Phosphor Bronze

PCB Contact Termination Area Plating Material Tin, Tin over Nickel

Contact Current Rating (Max) 1 A

Contact Options Installed

Termination Features

Rectangular Termination Post & Tail Width .41 mm[.016 in]

Rectangular Termination Post & Tail Thickness .3 mm[.011 in]

Termination Method to PCB Through Hole - Solder

Termination Post & Tail Length 2.54 mm[.1 in]

Mechanical Attachment

Mating Retention Type Latch

PCB Mount Retention With

Mounting Feature Plating Material Nickel over Copper

Mounting Feature Material Zinc

Mounting Hole Diameter 2.77 mm[.109 in]

Mating Retention With

PCB Mount Retention Type Boardlock

Mating Alignment Without

PCB Mount Alignment Without

Assembly Process Feature Plating Material Tin over Nickel

Connector Mounting Type Board Mount

Housing Features

Housing Material Thermoplastic

Shell Material Carbon Steel

Centerline (Pitch) 1.27 mm[.05 in]

Dimensions

Row-to-Row Spacing 2.54 mm[.1 in]



PCB Thickness (Recommended)	1.57 mm[.062 in]
-----------------------------	------------------

Usage Conditions

Operating Temperature Range	-55 – 105 °C[-67 – 221 °F]
-----------------------------	----------------------------

Operation/Application

Shielded	Yes
Circuit Application	Signal

Industry Standards

UL Flammability Rating	UL 94V-0
Compatible With Approved Standards Products	LR-86179-1, UL E28476

Packaging Features

Packaging Quantity	14
Packaging Method	Tube

Product Compliance

[For compliance documentation, visit the product page on TE.com>](#)

EU RoHS Directive 2011/65/EU	Compliant
EU ELV Directive 2000/53/EC	Compliant
China RoHS 2 Directive MIIT Order No 32, 2016	No Restricted Materials Above Threshold
EU REACH Regulation (EC) No. 1907/2006	Current ECHA Candidate List: JAN 2025 (247) Candidate List Declared Against: JAN 2025 (247) Does not contain REACH SVHC
Halogen Content	Not Low Halogen - contains Br or Cl > 900 ppm.
Solder Process Capability	Reflow solder capable to 260°C

Product Compliance Disclaimer

This information is provided based on reasonable inquiry of our suppliers and represents our current actual knowledge based on the information they provided. This information is subject to change. The part numbers that TE has identified as EU RoHS compliant have a maximum concentration of 0.1% by weight in homogenous materials for lead, hexavalent chromium, mercury, PBB, PBDE, DBP, BBP, DEHP, DIBP, and 0.01% for cadmium, or qualify for an exemption to these limits as defined in the Annexes of Directive 2011/65/EU (RoHS2). Finished electrical and electronic equipment products will be CE marked as required by Directive 2011/65/EU. Components may not be CE marked. Additionally, the part numbers that TE has identified as EU ELV compliant have a maximum concentration of 0.1% by weight in homogenous materials for lead, hexavalent chromium, and mercury, and 0.01% for cadmium, or qualify for an exemption to these limits as defined in the Annexes of Directive 2000/53/EC (ELV). Regarding the REACH Regulation, the information TE provides on SVHC in articles for this part number is based on the latest European Chemicals Agency (ECHA) 'Guidance on requirements for substances in articles' posted at this URL: <https://echa.europa.eu/guidance-documents/guidance-on-reach>



Compatible Parts

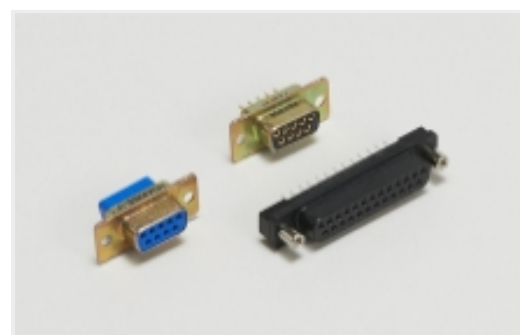


TE Part # 5749621-2
26 50S CABLE PLUG CONN/COV KIT

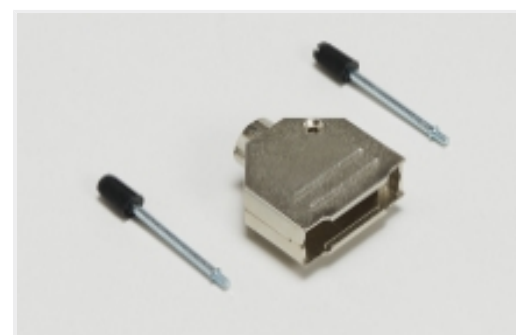
Also in the Series | **AMPLIMITE 0.50 Series**



Connector Hardware(6)



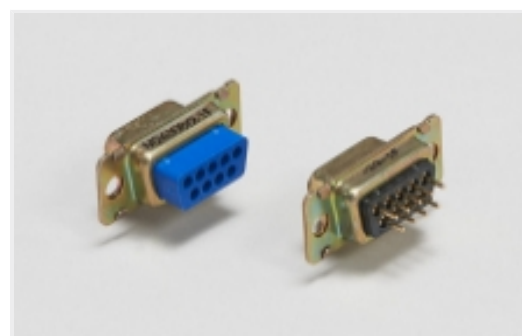
D-Shaped Connectors(241)



D-Sub Backshells & Clamps(21)



IDC D-Sub Connectors(69)



Panel Mount D-Sub Connectors(28)

Customers Also Bought



TE Part #5103308-1
A/L LOW PRO HDR 10P VERT BLACK



TE Part #5749621-2
26 50S CABLE PLUG CONN/COV KIT



TE Part #1625854-3
0603 PROBE PAD



TE Part #1658612-2
25 POS HDF RCPT, MS, LEAD FREE



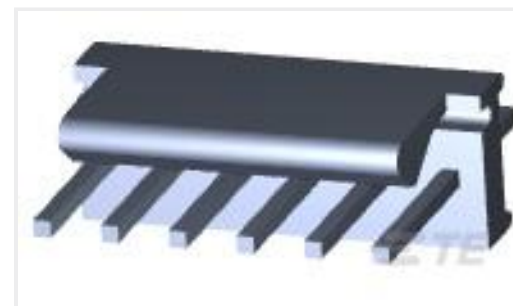
TE Part #1981568-1
MICRO USB, TYPE B,



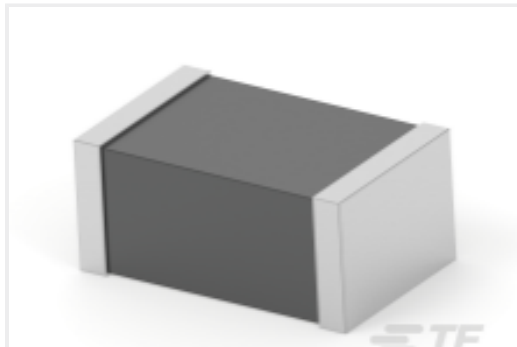
TE Part #5179031-1
0.8FH,P08H.5,040,08/Sn,TU



TE Part #749608-2
26 50SR KIT, ST, UK



TE Part #640456-6
06P MTA100 HDR ASSY F/L SQ STR



TE Part #2176487-1
BMC 0805 300R 25% A Med C



TE Part #5227726-3
ISOLATED BNC SOLDER JACK ASSY

Documents

CAD Files

Customer View Model

[ENG_CVM_CVM_5787082-2_A.2d_dxf.zip](#)

English

3D PDF

3D

Customer View Model

[ENG_CVM_CVM_5787082-2_A.3d_igs.zip](#)

English

Customer View Model

[ENG_CVM_CVM_5787082-2_A.3d_stp.zip](#)

English

By downloading the CAD file I accept and agree to the [Terms and Conditions](#) of use.

Product Specifications

Application Specification

English

Agency Approvals

UL

English