

327639 ✓ ACTIVE



PIDG

TE Internal #: 327639

Butt Splice, 12 – 10 AWG / 22 – 18 AWG, .26 – .96 mm² / 2.62 – 6.64 mm² Wire, Serrated, Copper, Yellow - Translucent, 8 Serration, PIDG

[View on TE.com >](#)

Terminals & Splices > Splices > PIDG Stepdown Butt Splices



Splice Type: **Butt Splice**

Wire Size: 2.62 – 6.64 mm², .26 – .96 mm²

Sealable: **No**

Splice Features: **Serrated**

[All PIDG Stepdown Butt Splices \(6\)](#)

Features

Product Type Features

Splice Accessory Type	Splice
Splice Type	Butt Splice
Sealable	No
Compatible With Discrete Wire Type	Stranded
Wire Insulation Support Retention Type	Insulation Support

Configuration Features

Number of Serrations	8
Compatible With Wire & Cable Type	Discrete Wire

Electrical Characteristics

Operating Voltage	300 V
-------------------	-------

Body Features

Insulation Material	Nylon
Insulation Type	Pre-Insulated
Splice Features	Serrated
Primary Product Color	Yellow - Translucent

Contact Features

Terminal Plating Material	Tin
---------------------------	-----



Contact Base Material	Copper
-----------------------	--------

Barrel Type	Closed
-------------	--------

Mechanical Attachment

Wire Insulation Support	With
-------------------------	------

Dimensions

Recovered Inside Diameter	1.5 mm[.059 in]
---------------------------	-----------------

Outside Diameter	5.64 mm[.222 in]
------------------	------------------

Wire Size	2.62 – 6.64 mm ² , .26 – .96 mm ²
-----------	---

Terminal Material Thickness	.51 mm[.02 in]
-----------------------------	----------------

Product Length	42.06 mm[1.656 in]
----------------	--------------------

Usage Conditions

Insulation Option	Fully Insulated
-------------------	-----------------

Industry Standards

Government Qualified Splice	No
-----------------------------	----

Packaging Features

Packaging Quantity	50
--------------------	----

Packaging Method	Loose Piece
------------------	-------------

Product Compliance

[For compliance documentation, visit the product page on TE.com>](#)

EU RoHS Directive 2011/65/EU	Compliant
------------------------------	-----------

EU ELV Directive 2000/53/EC	Compliant
-----------------------------	-----------

China RoHS 2 Directive MIIT Order No 32, 2016	No Restricted Materials Above Threshold
---	---

EU REACH Regulation (EC) No. 1907/2006	Current ECHA Candidate List: JAN 2025 (247) Candidate List Declared Against: JAN 2025 (247) Does not contain REACH SVHC
--	---

Halogen Content	Low Halogen - Br, Cl, F, I < 900 ppm per homogenous material. Also BFR/CFR/PVC Free
-----------------	---

Solder Process Capability	Not applicable for solder process capability
---------------------------	--

Product Compliance Disclaimer

This information is provided based on reasonable inquiry of our suppliers and represents our current actual knowledge based on the information they provided. This information is subject to change. The part numbers that TE has identified as EU RoHS compliant have a maximum concentration of 0.1% by weight in homogenous materials for lead, hexavalent chromium, mercury, PBB, PBDE, DBP, BBP, DEHP, DIBP, and 0.01% for cadmium, or qualify for an exemption to these limits as defined in the Annexes of Directive 2011/65/EU (RoHS2). Finished electrical and electronic equipment products will be CE marked as required by Directive 2011/65/EU. Components may not be CE marked. Additionally, the part numbers that TE has identified as EU ELV compliant have a maximum concentration of 0.1% by weight in homogenous materials for lead, hexavalent chromium, and mercury, and 0.01% for cadmium, or qualify for an exemption to these limits as defined in the Annexes of Directive 2000/53/EC (ELV). Regarding the REACH Regulation, the information TE provides on SVHC in articles for this part number is based on the latest European Chemicals Agency (ECHA) 'Guidance on requirements for substances in articles' posted at this URL: <https://echa.europa.eu/guidance-documents/guidance-on-reach>

Compatible Parts



Also in the Series | **PIDG**



Compression Connectors(17)



Crimp Wire Pins, Tabs & Ferrules(41)



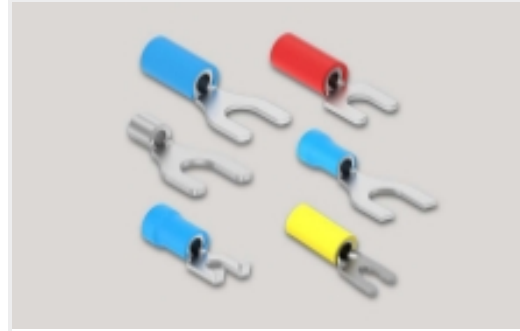
Hand Crimping Tools(2)



Knife Disconnects(11)



Ring Terminals(588)



Spade Terminals(228)

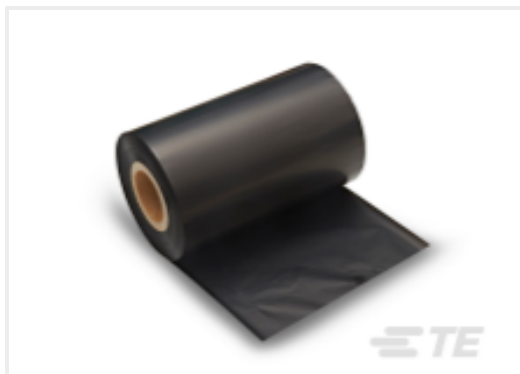


Special Purpose Terminals(1)



Splices(41)

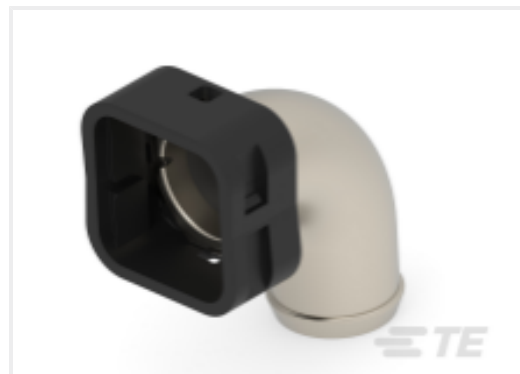
Customers Also Bought



TE Part #1SET540007R0000
1966-RIBBON-NAR-E



TE Part #1-1761607-1
IDC LOW PRO HDR 34P RA LAT



TE Part #ZPF000000000102764
787-8055-30M



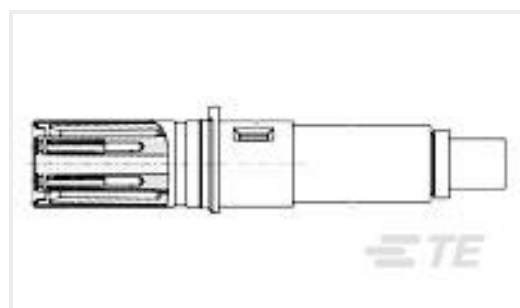
TE Part #1-2176578-3
RLC73K 2B R806 1% 5K RL



TE Part #6609053-7
6EHT7=F7666 S0



TE Part #1218408-4
AMPLIMITE,ASY,RCPT,RTANG,109,4



TE Part #1445693-4
BACC47GB1 - SCKT CONTACT, QUADRAX,SZ8,RR



TE Part #1393118-3
KUP-14A55-240=KU



TE Part #4-643817-2
12P MTA156 CONN ASSY 18AWG LF



TE Part #T4113502041-000
M12,MALE,RA,D CODE,4P,PG9,GOLD

Documents



Product Drawings

SPLICE BUTT PIDG 12-10/22-18

English

CAD Files

3D PDF

3D

Customer View Model

[ENG_CVM_CVM_327639_H.2d_dxf.zip](#)

English

Customer View Model

[ENG_CVM_CVM_327639_H.3d_igs.zip](#)

English

Customer View Model

[ENG_CVM_CVM_327639_H.3d_stp.zip](#)

English

3D PDF

English

Customer View Model

[ENG_CVM_327639_H1.3d_igs.zip](#)

English

Customer View Model

[ENG_CVM_327639_H1.3d_stp.zip](#)

English

Customer View Model

[ENG_CVM_327639_H1.2d_dxf.zip](#)

English

By downloading the CAD file I accept and agree to the [Terms and Conditions](#) of use.

Datasheets & Catalog Pages

PIDG TERMINALS & SPLICES Quick Reference Guide

English

Instruction Sheets

Instruction Sheet (U.S.)

English

Agency Approvals

UL Report

English