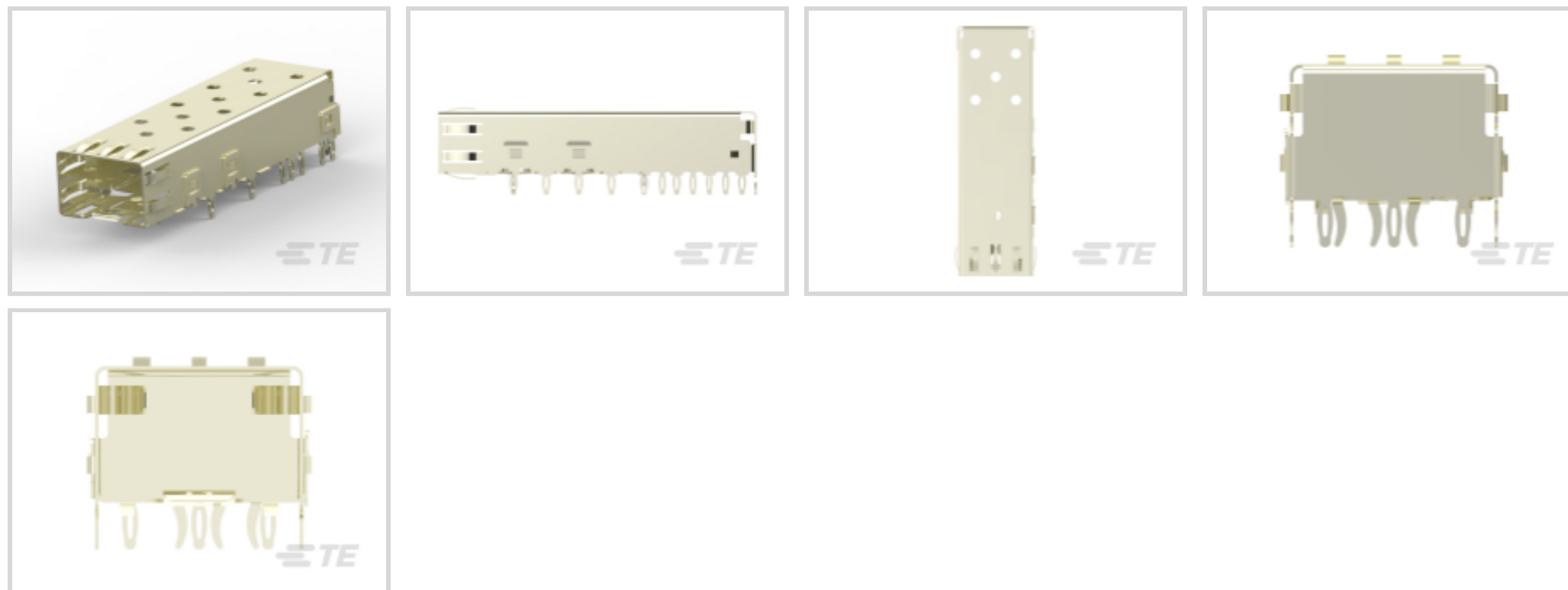




Connectors > Pluggable IO Connectors & Cages



Form Factor: **SFP**

Pluggable I/O Product Type: **Cage**

Sealable: **No**

Operating Temperature Range: **-55 – 105 °C [-67 – 221 °F]**

Data Rate (Max): **4 Gb/s**

Features

Product Type Features

Cage Type	Single
Form Factor	SFP
Pluggable I/O Product Type	Cage
Sealable	No

Configuration Features

Number of Ports	1
Port Matrix Configuration	1 x 1

Electrical Characteristics

Data Rate (Max)	4 Gb/s
-----------------	--------

Termination Features

Termination Method to PCB	Through Hole - Press-Fit
Termination Post & Tail Length	3 mm[.118 in]

Housing Features

Cage Material	Stainless Steel
---------------	-----------------

Dimensions



PCB Thickness (Recommended)	1.5 mm[.059 in]
-----------------------------	-----------------

Usage Conditions

Operating Temperature Range	-55 – 105 °C[-67 – 221 °F]
-----------------------------	----------------------------

Operation/Application

Pluggable I/O Applications	SFP
Heat Sink Compatible	No

Packaging Features

Packaging Method	Box
------------------	-----

Other

Included Lightpipe	No
EMI Containment Feature Type	Internal/External EMI Springs

Product Compliance

[For compliance documentation, visit the product page on TE.com>](#)

EU RoHS Directive 2011/65/EU	Compliant
EU ELV Directive 2000/53/EC	Compliant
China RoHS 2 Directive MIIT Order No 32, 2016	No Restricted Materials Above Threshold
EU REACH Regulation (EC) No. 1907/2006	Current ECHA Candidate List: JAN 2025 (247) Candidate List Declared Against: JAN 2025 (247) Does not contain REACH SVHC
Halogen Content	Low Halogen - Br, Cl, F, I < 900 ppm per homogenous material. Also BFR/CFR/PVC Free
Solder Process Capability	Not applicable for solder process capability

Product Compliance Disclaimer

This information is provided based on reasonable inquiry of our suppliers and represents our current actual knowledge based on the information they provided. This information is subject to change. The part numbers that TE has identified as EU RoHS compliant have a maximum concentration of 0.1% by weight in homogenous materials for lead, hexavalent chromium, mercury, PBB, PBDE, DBP, BBP, DEHP, DIBP, and 0.01% for cadmium, or qualify for an exemption to these limits as defined in the Annexes of Directive 2011/65/EU (RoHS2). Finished electrical and electronic equipment products will be CE marked as required by Directive 2011/65/EU. Components may not be CE marked. Additionally, the part numbers that TE has identified as EU ELV compliant have a maximum concentration of 0.1% by weight in homogenous materials for lead, hexavalent chromium, and mercury, and 0.01% for cadmium, or qualify for an exemption to these limits as defined in the Annexes of Directive 2000/53/EC (ELV). Regarding the REACH Regulation, the information TE provides on SVHC in articles for this part number is based on the latest European Chemicals Agency (ECHA) 'Guidance on requirements for substances in articles' posted at this URL: <https://echa.europa.eu/guidance-documents/guidance-on-reach>

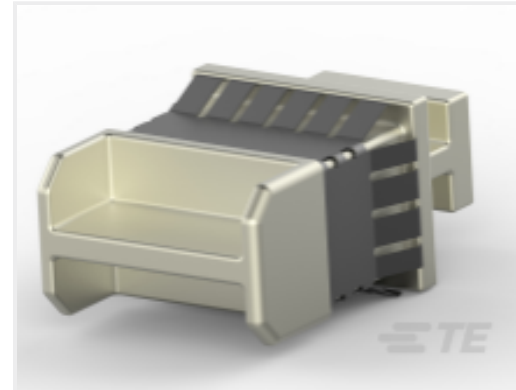
Compatible Parts



TE Part # CAT-SF59-C76264
SFP Connectors



TE Part # 1367147-1
SFP COVER, UNPLATED



TE Part # 1888901-1
SFP+ EMI Plug



TE Part # 2215077-4
ASSY, SEATING TOOL, SFP



TE Part # 1761394-1
DUST COVER, SFP, GANGED & STACKED

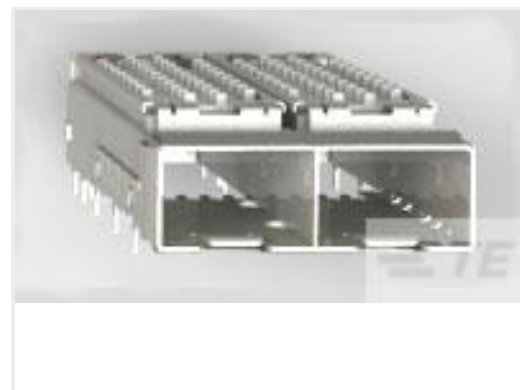


TE Part # 1367147-3
SFP COVER, UNPL, NO LOGO

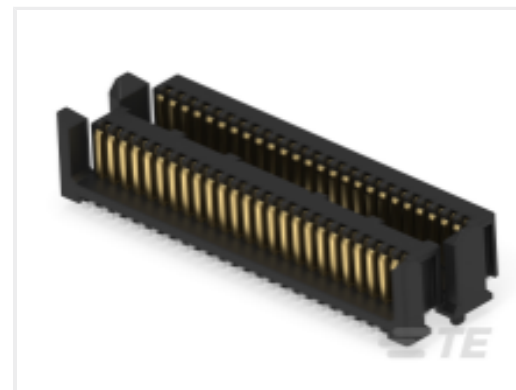
Customers Also Bought



TE Part #2227302-1
CAGE ASSY, PRESS FIT, SFP



TE Part #2198230-1
SFP+ Enhanced 1x2, PCI Heatsink



TE Part #114713-E
MICROS STV 50 407 188 * 0007 J 3 114713



TE Part #2170806-1
CAGE ASSEMBLY, 1X2, QSFP28, SPRING, HS



TE Part #CAT-SF59-C76264
SFP Connectors



TE Part #5-2176429-9
MPT100 220R 1%



TE Part #1-1879134-4
RN 0603 13K3 0.1% 10PPM 1K RL



TE Part #1825142-4
AE101MD1AQ04



TE Part #5428154001
LSTT-19-0-SP



Documents

Product Drawings

[CAGE ASSY PRESS FIT, SFP](#)

English

CAD Files

[3D PDF](#)

3D

Customer View Model

[ENG_CVM_CVM_2227023-1_A_c-2227023-1-a.2d_dxf.zip](#)

English

Customer View Model

[ENG_CVM_CVM_2227023-1_A_c-2227023-1-a.3d_igs.zip](#)

English

Customer View Model

[ENG_CVM_CVM_2227023-1_A_c-2227023-1-a.3d_stp.zip](#)

English

By downloading the CAD file I accept and agree to the [Terms and Conditions](#) of use.

Product Specifications

[Application Specification](#)

English