



AMP | AMP M Series

TE Internal #: 205607-2

Housing, Plug, Crimp, Cable-to-Panel, UL 94V-0, 15 Position, 5.08 mm [.2 in] Centerline, AMP M Series, Rectangular Wire & Cable Connectors & Housings

[View on TE.com >](#)

Connectors > Rectangular Connectors > Standard Rectangular Connectors



Connector Product Type: **Housing**

Connector & Housing Type: **Plug**

Termination Method to Wire & Cable: **Crimp**

Connector System: **Cable-to-Panel**

Contact Retention Within Housing: **With**

Features

Product Type Features

Connector Product Type	Housing
Connector & Housing Type	Plug
Connector System	Cable-to-Panel
Sealable	No
Connector & Contact Terminates To	Wire & Cable

Configuration Features

Number of Signal Positions	15
Number of Power Positions	15
Number of Positions	15
Number of Rows	3

Electrical Characteristics

Operating Voltage	250 VAC
-------------------	---------

Body Features

Primary Product Color	Black
-----------------------	-------



Contact Features

Contact Type	Pin
Contact Retention Within Housing	With
Contact Current Rating (Max)	13 A

Termination Features

Termination Method to Wire & Cable	Crimp
------------------------------------	-------

Mechanical Attachment

Strain Relief	Without
Panel Mount Feature	With
Contact Retention Type Within Housing	Locking Spring
Panel Mount Feature Type	Screw Mount
Connector Mounting Type	Panel Mount

Housing Features

Housing Material	Phenolic GF
Centerline (Pitch)	5.08 mm [.2 in]

Dimensions

Row-to-Row Spacing	5.08 mm [.2 in]
Connector Width	14.5 mm [.57 in]
Connector Height	41.4 mm [1.63 in]
Wire Size	30 – 14 AWG
Connector Length	23.24 mm [.915 in]

Usage Conditions

Operating Temperature Range	-55 – 150 °C [-67 – 302 °F]
-----------------------------	-----------------------------

Operation/Application

Circuit Application	Power & Signal
---------------------	----------------

Industry Standards

Glow Wire Rating	Standard Part - Not Glow Wire
UL Flammability Rating	UL 94V-0

Packaging Features

Packaging Quantity	152
Packaging Method	Box & Carton

Product Compliance

[For compliance documentation, visit the product page on TE.com>](#)

EU RoHS Directive 2011/65/EU	Compliant
EU ELV Directive 2000/53/EC	Compliant
China RoHS 2 Directive MIIT Order No 32, 2016	No Restricted Materials Above Threshold
EU REACH Regulation (EC) No. 1907/2006	Current ECHA Candidate List: JAN 2025 (247) Candidate List Declared Against: JAN 2025 (247) Does not contain REACH SVHC
Halogen Content	Low Halogen - Br, Cl, F, I < 900 ppm per homogenous material. Also BFR/CFR/PVC Free
Solder Process Capability	Wave solder capable to 265°C

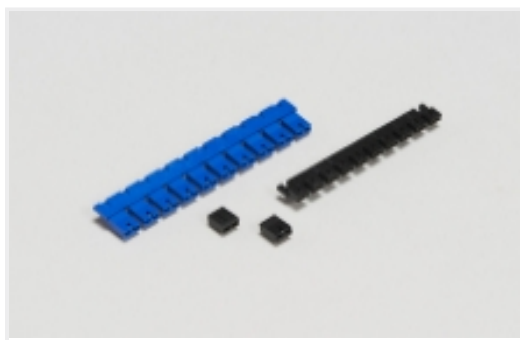
Product Compliance Disclaimer

This information is provided based on reasonable inquiry of our suppliers and represents our current actual knowledge based on the information they provided. This information is subject to change. The part numbers that TE has identified as EU RoHS compliant have a maximum concentration of 0.1% by weight in homogenous materials for lead, hexavalent chromium, mercury, PBB, PBDE, DBP, BBP, DEHP, DIBP, and 0.01% for cadmium, or qualify for an exemption to these limits as defined in the Annexes of Directive 2011/65/EU (RoHS2). Finished electrical and electronic equipment products will be CE marked as required by Directive 2011/65/EU. Components may not be CE marked. Additionally, the part numbers that TE has identified as EU ELV compliant have a maximum concentration of 0.1% by weight in homogenous materials for lead, hexavalent chromium, and mercury, and 0.01% for cadmium, or qualify for an exemption to these limits as defined in the Annexes of Directive 2000/53/EC (ELV). Regarding the REACH Regulation, the information TE provides on SVHC in articles for this part number is based on the latest European Chemicals Agency (ECHA) 'Guidance on requirements for substances in articles' posted at this URL: <https://echa.europa.eu/guidance-documents/guidance-on-reach>

Compatible Parts



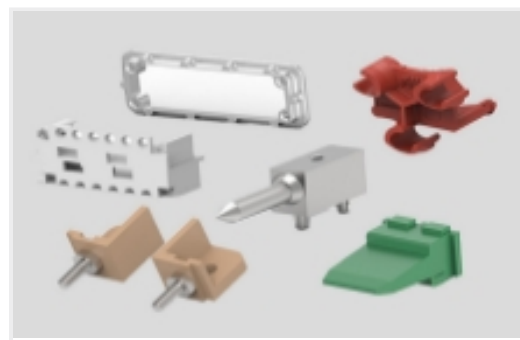
Also in the Series | [AMP M Series](#)



Board-to-Board Jumpers & Shunts(5)



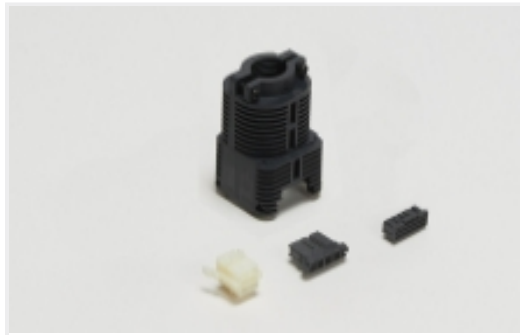
Connector Contacts(51)



Connector Hardware(47)



Power Contacts(51)



Rectangular Connector Housings(77)



Rectangular Power Connectors(82)



Standard Rectangular Connectors(81)

Customers Also Bought



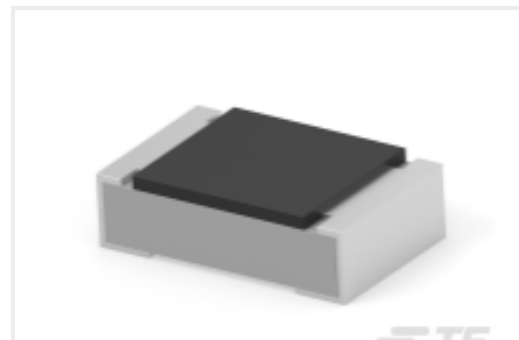
TE Part #5-1879225-3
CPF 0603 154K 0.1% 25PPM 1K RL



TE Part #9-1879214-5
CPF 0402 3K57 0.1% 25PPM 1K RL



TE Part #1879337-5
CPF 0603 2K74 1% 50PPM 1K RL



TE Part #8-2176569-2
RLC73K 2A R464 1% 5K RL



TE Part #7-1879213-7
CPF 0402 182R 0.1% 25PPM 1K RL



TE Part #4-1879214-7
CPF 0402 1K02 0.1% 25PPM 1K RL



TE Part #5-2176237-0
CPF A 0603 30K 0.1% 25PPM 5K RL



TE Part #5-2176237-3
CPF A 0603 39K 0.1% 25PPM 5K RL



TE Part #4-641215-6
16P MTA100 HDR ASSY FL/ST 30AU



TE Part #8-1879214-9
CPF 0402 3K09 0.1% 25PPM 1K RL

Documents



Product Drawings

[PIN BLK,15 POSN,AUTOWIRE](#)

English

CAD Files

Customer View Model

[ENG_CVM_CVM_205607-2_T.3d_stp.zip](#)

English

Customer View Model

[ENG_CVM_CVM_205607-2_T.2d_dxf.zip](#)

English

Customer View Model

[ENG_CVM_CVM_205607-2_T.3d_igs.zip](#)

English

[3D PDF](#)

3D

[3D PDF](#)

English

Customer View Model

[ENG_CVM_205607-2_E.3d_igs.zip](#)

English

Customer View Model

[ENG_CVM_205607-2_E.3d_stp.zip](#)

English

Customer View Model

[ENG_CVM_205607-2_E.2d_dxf.zip](#)

English

By downloading the CAD file I accept and agree to the [Terms and Conditions](#) of use.

Product Specifications

[Connector, Series "M"](#)

English

[Product Specification](#)

English