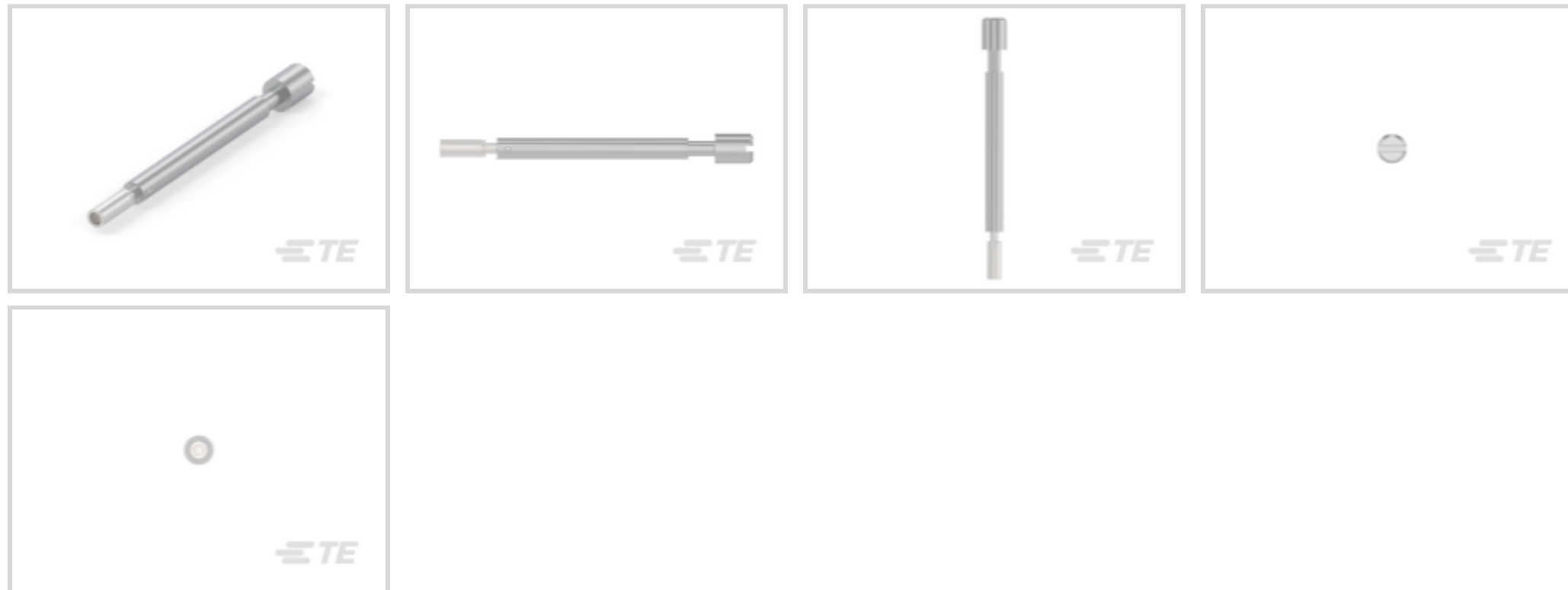




Connectors > Connector Accessories > Connector Hardware



Connector Hardware Accessory Type: **Female Screwlock**
 Primary Product Material: **Stainless Steel, Zinc Alloy**
 Operating Temperature (Max): **150 °C [302 °F]**
 Operating Temperature Range: **-55 – 150 °C [-67 – 302 °F]**
 Hardware Accessory Function: **Latching, Locking & Retention**

Features

Product Type Features

Connector Hardware Accessory Type	Female Screwlock
Hardware Accessory Function	Latching, Locking & Retention

Body Features

Primary Product Material	Stainless Steel, Zinc Alloy
--------------------------	-----------------------------

Mechanical Attachment

Hardware Type Included	Jackscrew Tip Female and Spirol Pin
Thread Size	6-32
Product Plating Finish	Hexavalent Chromate

Dimensions

Product Width	7.92 mm[.312 in]
Product Length	68.66 mm[2.703 in]
Product Height	7.92 mm[.312 in]

Usage Conditions

Operating Temperature (Max)	150 °C[302 °F]
Operating Temperature Range	-55 – 150 °C[-67 – 302 °F]

Packaging Features

Packaging Method	Bag
Packaging Quantity	100

Product Compliance

[For compliance documentation, visit the product page on TE.com>](#)

EU RoHS Directive 2011/65/EU	Not Compliant
EU ELV Directive 2000/53/EC	Not Compliant
China RoHS 2 Directive MIIT Order No 32, 2016	Restricted Materials Above Threshold
EU REACH Regulation (EC) No. 1907/2006	Current ECHA Candidate List: JAN 2025 (247) Candidate List Declared Against: JAN 2025 (247) Does not contain REACH SVHC
Halogen Content	Low Halogen - Br, Cl, F, I < 900 ppm per homogenous material. Also BFR/CFR/PVC Free
Solder Process Capability	Not applicable for solder process capability

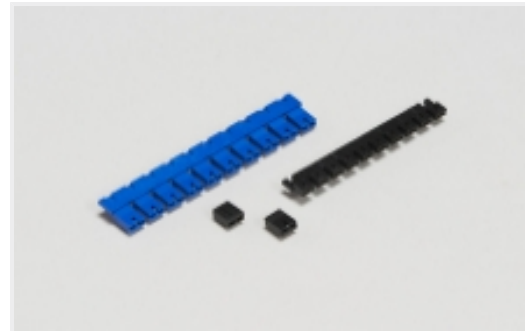
Product Compliance Disclaimer

This information is provided based on reasonable inquiry of our suppliers and represents our current actual knowledge based on the information they provided. This information is subject to change. The part numbers that TE has identified as EU RoHS compliant have a maximum concentration of 0.1% by weight in homogenous materials for lead, hexavalent chromium, mercury, PBB, PBDE, DBP, BBP, DEHP, DIBP, and 0.01% for cadmium, or qualify for an exemption to these limits as defined in the Annexes of Directive 2011/65/EU (RoHS2). Finished electrical and electronic equipment products will be CE marked as required by Directive 2011/65/EU. Components may not be CE marked. Additionally, the part numbers that TE has identified as EU ELV compliant have a maximum concentration of 0.1% by weight in homogenous materials for lead, hexavalent chromium, and mercury, and 0.01% for cadmium, or qualify for an exemption to these limits as defined in the Annexes of Directive 2000/53/EC (ELV). Regarding the REACH Regulation, the information TE provides on SVHC in articles for this part number is based on the latest European Chemicals Agency (ECHA) 'Guidance on requirements for substances in articles' posted at this URL: <https://echa.europa.eu/guidance-documents/guidance-on-reach>

Compatible Parts



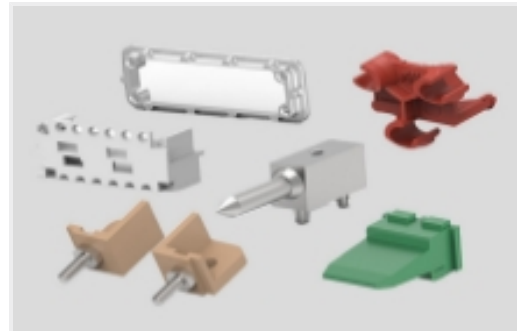
Also in the Series | AMP M Series



Board-to-Board Jumpers & Shunts(5)



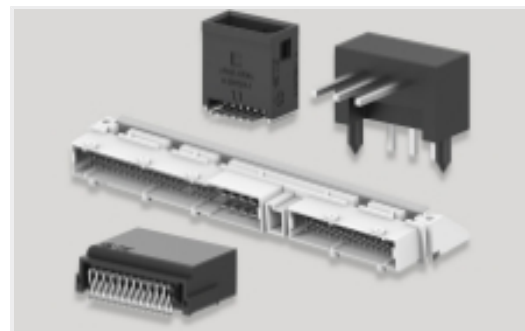
Connector Caps & Covers(14)



Connector Hardware(47)



Connector Strain Relief(13)



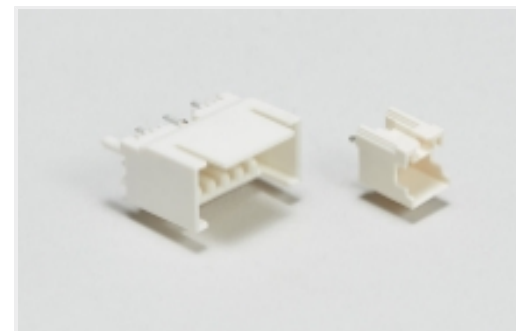
PCB Headers & Receptacles(9)



Rack & Panel Connectors(1)



Rectangular Power Connectors(82)



Wire-to-Board Headers & Receptacles (1)

Customers Also Bought



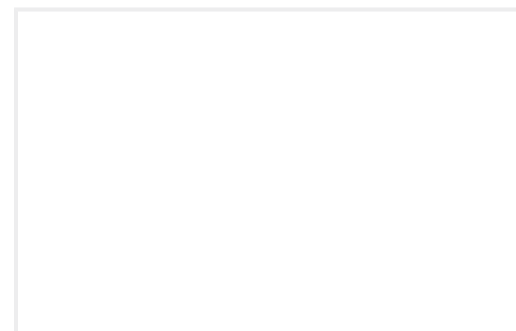
TE Part #200333-1
CONTACT SOC. ASSY.



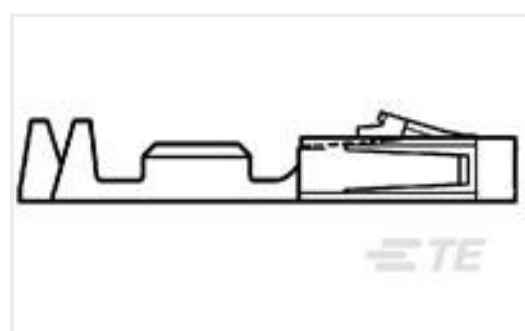
TE Part #201047-2
SERIES "M" ST. STL. GUIDE SOC.



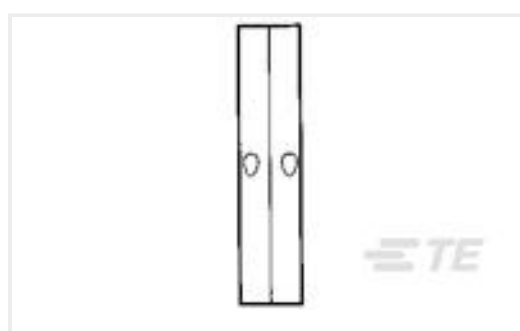
TE Part #207234-1
UNASSM JS KIT,M SERIES



TE Part #1SNA113550R2400
EIP



TE Part #104480-2
SHORT POINT CONT PLTD SN-PB



TE Part #32151
SPLICE,SOLIS BUTT 12-10



TE Part #62109-2
250 FASTON REC 18-14 AWG TPBR



TE Part #52453-1
PG SPR SPD 22-16COMM22-18MIL 6



TE Part #42110-3
RING TERMINAL 18-14 AWG BR



TE Part #640903-2
RECEPT,PIDG FASTON 22-18 250



Documents

Product Drawings

JACKSCREW KIT

English

CAD Files

Customer View Model

[ENG_CVM_201910-1_L1.3d_igs.zip](#)

English

Customer View Model

[ENG_CVM_201910-1_L1.3d_stp.zip](#)

English

Customer View Model

[ENG_CVM_201910-1_L1.2d_dxf.zip](#)

English

3D PDF

English

Customer View Model

[ENG_CVM_CVM_201910-1_D.3d_igs.zip](#)

English

Customer View Model

[ENG_CVM_CVM_201910-1_D.3d_stp.zip](#)

English

Customer View Model

[ENG_CVM_CVM_201910-1_D.2d_dxf.zip](#)

English

3D PDF

3D

By downloading the CAD file I accept and agree to the [Terms and Conditions](#) of use.

Datasheets & Catalog Pages

M_SERIES_PIN_AND_SOCKET_CONNECTORS

English

Instruction Sheets

Instruction Sheet (U.S.)

English

AMP TURNABLE JACK SCREW SPECIFICATIONS AND ASSEMBLY INSTRUCTIONS

English