

**QSFP/QSFP+**

TE Internal #: 2007626-2

QSFP+, Cage Assembly, Signal, Operating Temperature Range -55 – 105 °C [-67 – 221 °F], Data Rate (Max) 14 Gb/s, 4 Ports

[View on TE.com >](#)

Connectors &gt; Pluggable IO Connectors &amp; Cages

Form Factor: **QSFP+**Pluggable I/O Product Type: **Cage Assembly**Sealable: **No**Circuit Application: **Signal**Operating Temperature Range: **-55 – 105 °C [-67 – 221 °F]****Features****Product Type Features**

Cage Type	Ganged
Thermal Accessory Type Included	Heat Sink
Form Factor	QSFP+
Pluggable I/O Product Type	Cage Assembly
Sealable	No

**Configuration Features**

Number of Rear EONs per Port Column	1
Number of Ports	4
Port Matrix Configuration	1 x 4

**Electrical Characteristics**

Data Rate (Max)	14 Gb/s
-----------------	---------

**Body Features**

Heat Sink Style	Pin
Heat Sink Finish	Anodized Black
Heat Sink Height	13.5 mm[.531 in]
Heat Sink Height Class	Networking

**Contact Features**

PCB Contact Termination Area Plating Material	Tin
---	-----



### Termination Features

Termination Method to PCB	Through Hole - Press-Fit
Termination Post & Tail Length	2.2 mm[.086 in]

### Housing Features

Cage Material	Nickel Silver
---------------	---------------

### Dimensions

PCB Thickness (Recommended)	1.45 mm[.057 in]
-----------------------------	------------------

### Usage Conditions

Operating Temperature Range	-55 – 105 °C[-67 – 221 °F]
-----------------------------	----------------------------

### Operation/Application

Pluggable I/O Applications	SFP+ Stacked Belly-to-Belly
Circuit Application	Signal

### Industry Standards

UL Flammability Rating	UL 94V-0
------------------------	----------

### Packaging Features

Packaging Method	Box & Tray
------------------	------------

### Other

Included Lightpipe	Yes
EMI Containment Feature Type	Customer Applied Gasket

### Product Compliance

[For compliance documentation, visit the product page on TE.com>](#)

EU RoHS Directive 2011/65/EU	Compliant
EU ELV Directive 2000/53/EC	Compliant
China RoHS 2 Directive MIIT Order No 32, 2016	No Restricted Materials Above Threshold
EU REACH Regulation (EC) No. 1907/2006	Current ECHA Candidate List: JAN 2025 (247) Candidate List Declared Against: JUNE 2024 (241) Does not contain REACH SVHC
Halogen Content	Not Low Halogen - contains Br or Cl > 900 ppm.
Solder Process Capability	Not applicable for solder process capability



Product Compliance Disclaimer

This information is provided based on reasonable inquiry of our suppliers and represents our current actual knowledge based on the information they provided. This information is subject to change. The part numbers that TE has identified as EU RoHS compliant have a maximum concentration of 0.1% by weight in homogenous materials for lead, hexavalent chromium, mercury, PBB, PBDE, DBP, BBP, DEHP, DIBP, and 0.01% for cadmium, or qualify for an exemption to these limits as defined in the Annexes of Directive 2011/65/EU (RoHS2). Finished electrical and electronic equipment products will be CE marked as required by Directive 2011/65/EU. Components may not be CE marked. Additionally, the part numbers that TE has identified as EU ELV compliant have a maximum concentration of 0.1% by weight in homogenous materials for lead, hexavalent chromium, and mercury, and 0.01% for cadmium, or qualify for an exemption to these limits as defined in the Annexes of Directive 2000/53/EC (ELV). Regarding the REACH Regulation, the information TE provides on SVHC in articles for this part number is based on the latest European Chemicals Agency (ECHA) 'Guidance on requirements for substances in articles' posted at this URL: <https://echa.europa.eu/guidance-documents/guidance-on-reach>

## Compatible Parts



TE Part # 2829040-7  
QSFP IB EDR, 26AWG, 2.0M



TE Part # 2829040-8  
QSFP IB EDR, 26AWG, 3.0M



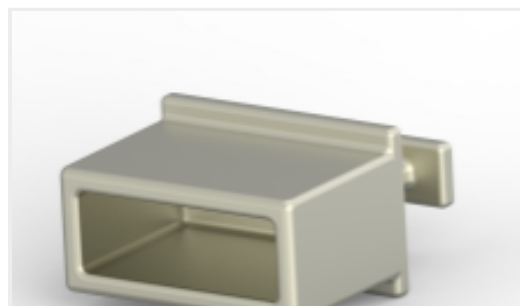
TE Part # 2202165-5  
QSFP TO QSFP, 26AWG, FDR, 5.0 METER



TE Part # 2202165-4  
QSFP TO QSFP, 26AWG, FDR, 4.0 METER



TE Part # 2053453-5  
C/A, QSFP TO 4XSFP+, 4.0M



TE Part # 1888810-2  
EMI/Dust Cover, XFP And QSFP



TE Part # 2829040-2  
QSFP IB EDR, 33AWG, 1.0M



TE Part # CAT-C11-H5011142  
QSFP to QSFP I/O Cable Assembly: 33 AWG



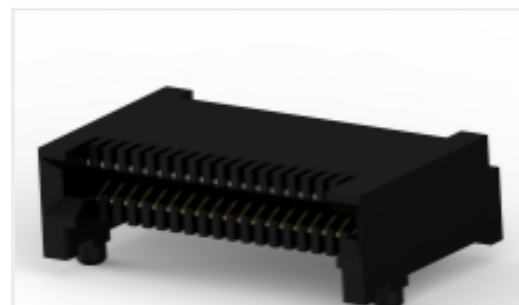
TE Part # 1-2053638-6  
C/A, QSFP, 0.5M, P1-P2, UNEQUALIZED



TE Part # 2821033-8  
QSFP TO [4]SFP+, 28G, 1M, 33AWG



TE Part # 2829040-4  
QSFP IB EDR, 30AWG, 1.0M



TE Part # 2110819-1  
QSFP+ Enh EVERCLEAR PT Conn

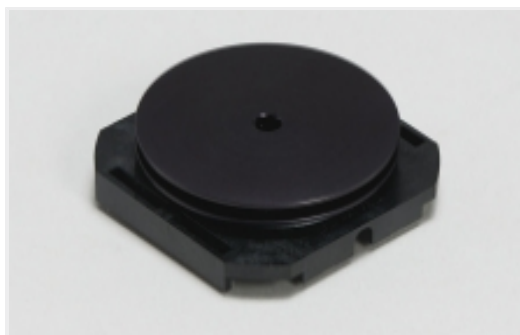


TE Part # 2829040-6  
QSFP IB EDR, 30AWG, 2.0M



TE Part # CAT-C11-H50111  
QSFP-Four SFP+ I/O Cable Assembly  
30 AWG

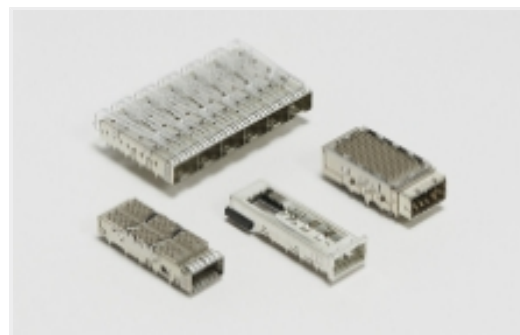
## Also in the Series | QSFP/QSFP+



Heat Sinks(1)



Light Pipes(8)



Pluggable IO Connectors & Cages(154)

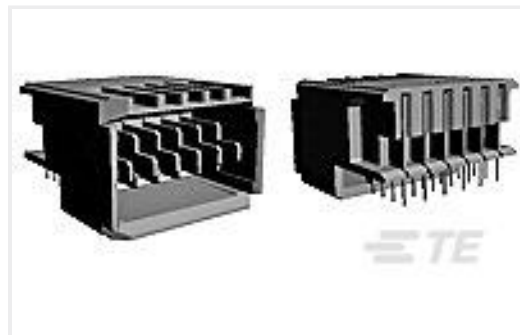


QSFP, QSFP+ & zQSFP+(154)

## Customers Also Bought



TE Part #2339978-6  
SFP56 STACKED 2X4 RECEPTACLE  
ASSEMBLY



TE Part #5223991-1  
UNIV. POWER MODULE R/A HEADER  
ASSEMBLY



TE Part #3-1437665-5  
JC6-P207-04=JC6 ASSEMBLY



TE Part #2-6450880-0  
MBXL R/A RCPT 1LP + 16S + 1LP



TE Part #2057042-8  
1x3 QSFP Kit Assy LP&HS, Networking



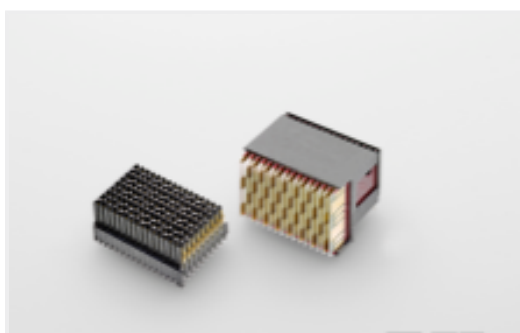
TE Part #2057042-5  
1x3 QSFP Kit Assy Lp&HS, SAN



TE Part #2057183-4  
1x4 QSFP Kit Assy, LP&HS, PCI



TE Part #6450871-1  
MBXLE R/A RCPT 32S+4LP



TE Part #2352032-1  
VERTRECCASSY,MULTIGIG RT3



TE Part #3-102898-8  
05 MODII HDR SRST UNSHRD A/PIN



## Documents

### Product Drawings

[1x4 QSFP Kit Assy Sqr LP, Networking](#)

English

---

### CAD Files

#### 3D PDF

3D

Customer View Model

[ENG\\_CVM\\_CVM\\_2007626-2\\_E.2d\\_dxf.zip](#)

English

Customer View Model

[ENG\\_CVM\\_CVM\\_2007626-2\\_E.3d\\_igs.zip](#)

English

Customer View Model

[ENG\\_CVM\\_CVM\\_2007626-2\\_E.3d\\_stp.zip](#)

English

By downloading the CAD file I accept and agree to the [Terms and Conditions](#) of use.

---

### Product Specifications

[Product Specification](#)

English