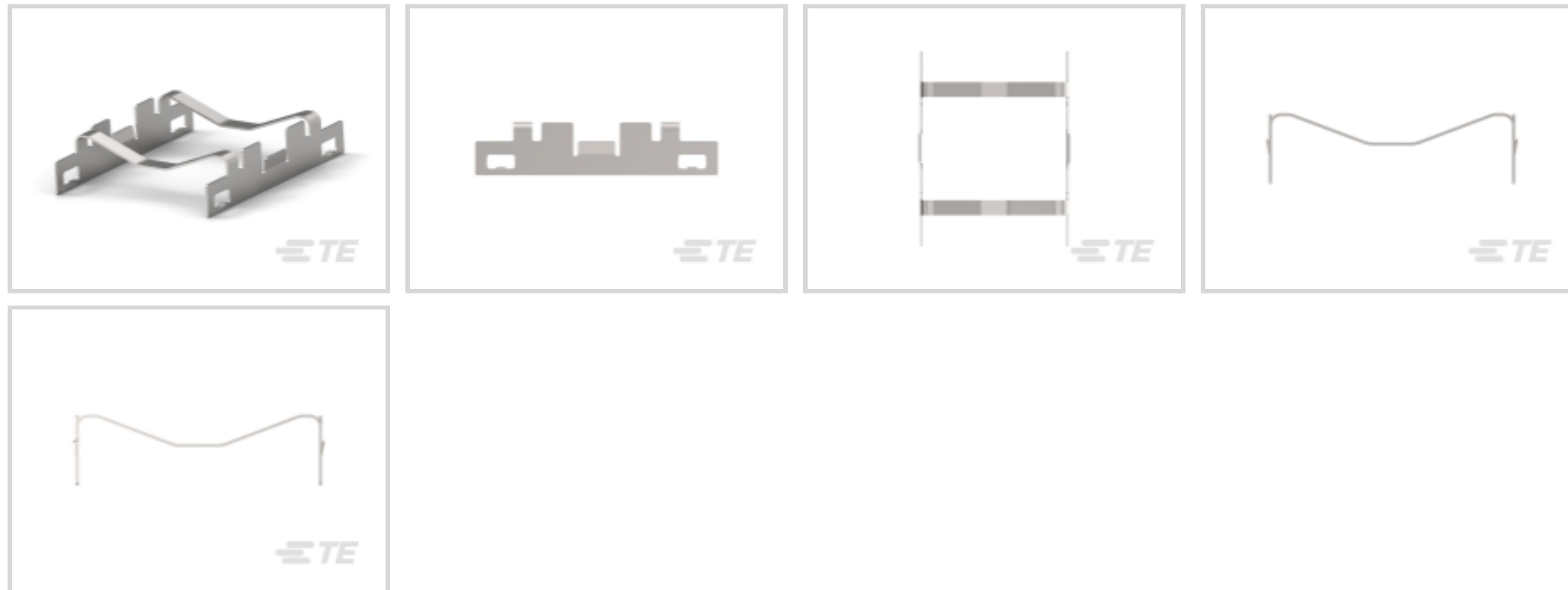




Connectors > Connector Accessories > Heat Sinks



Device Type: **QSFP**

### Features

#### Product Type Features

|             |      |
|-------------|------|
| Device Type | QSFP |
|-------------|------|

#### Body Features

|                          |                 |
|--------------------------|-----------------|
| Primary Product Material | Stainless Steel |
|--------------------------|-----------------|

### Product Compliance

[For compliance documentation, visit the product page on TE.com>](#)

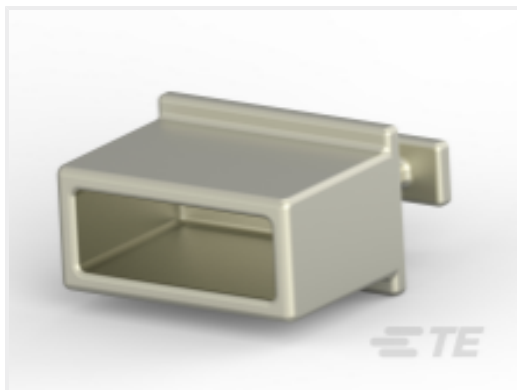
|   |  |
|---|--|
| EU RoHS Directive 2011/65/EU                  | Compliant  |
| EU ELV Directive 2000/53/EC                   | Compliant  |
| China RoHS 2 Directive MIIT Order No 32, 2016 | No Restricted Materials Above Threshold  |
| EU REACH Regulation (EC) No. 1907/2006        | Current ECHA Candidate List: JAN 2025 (247)<br>Candidate List Declared Against: JUNE 2024 (241)<br>Does not contain REACH SVHC |
| Halogen Content                               | Low Halogen - Br, Cl, F, I < 900 ppm per homogenous material. Also BFR/CFR/PVC Free  |
| Solder Process Capability                     | Not applicable for solder process capability   |

#### Product Compliance Disclaimer

This information is provided based on reasonable inquiry of our suppliers and represents our current actual knowledge based on the information they provided. This information is subject to change. The part numbers that TE has identified as

EU RoHS compliant have a maximum concentration of 0.1% by weight in homogenous materials for lead, hexavalent chromium, mercury, PBB, PBDE, DBP, BBP, DEHP, DIBP, and 0.01% for cadmium, or qualify for an exemption to these limits as defined in the Annexes of Directive 2011/65/EU (RoHS2). Finished electrical and electronic equipment products will be CE marked as required by Directive 2011/65/EU. Components may not be CE marked. Additionally, the part numbers that TE has identified as EU ELV compliant have a maximum concentration of 0.1% by weight in homogenous materials for lead, hexavalent chromium, and mercury, and 0.01% for cadmium, or qualify for an exemption to these limits as defined in the Annexes of Directive 2000/53/EC (ELV). Regarding the REACH Regulation, the information TE provides on SVHC in articles for this part number is based on the latest European Chemicals Agency (ECHA) 'Guidance on requirements for substances in articles' posted at this URL: <https://echa.europa.eu/guidance-documents/guidance-on-reach>

## Compatible Parts



TE Part # 1888810-2  
EMI/Dust Cover, XFP And QSFP

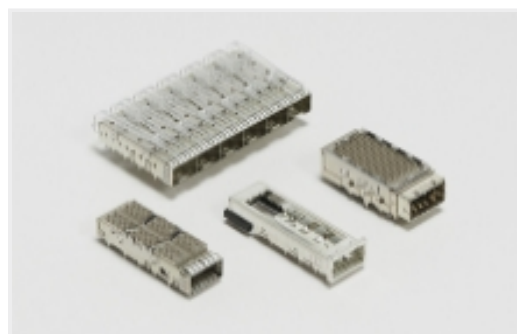


TE Part # 1551920-2  
zQSFP+ connector assembly

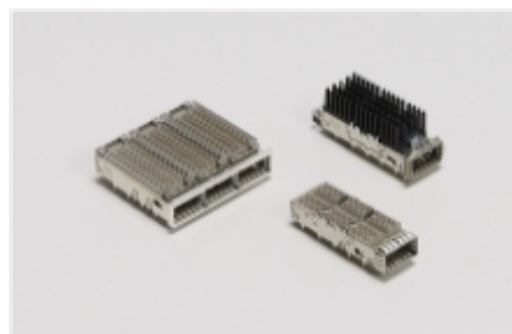
## Also in the Series | zQSFP+/QSFP28



Pluggable I/O Cable Assemblies(78)



Pluggable IO Connectors & Cages(424)

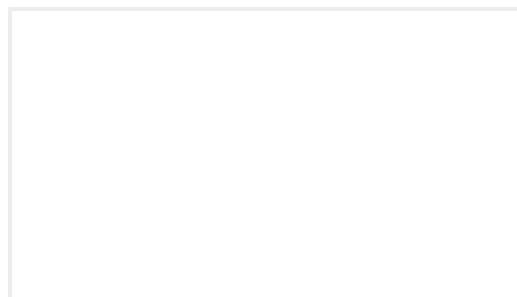


QSFP, QSFP+ & zQSPF+(424)

## Customers Also Bought



TE Part #2180850-1  
IMP,PWR,3PR,HDR,L-HLD,1X,797-1,N /A



TE Part #2-1734795-8  
RJ45,8P8C,SHD,G/Y LED, W/ Panel, 50u" Au"



TE Part #6-1761614-5  
STEP-Z PLUG 15MM 200P LF ST



TE Part #2309407-5  
DDR4 SODIMM 260P 4.0H STD



TE Part #2057433-3  
IMP100S,H,V2P10C,UG,REW39,5.5



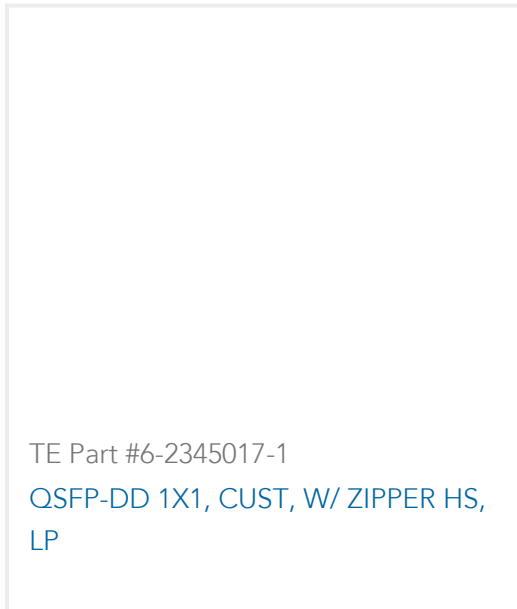
TE Part #223956-1  
STV ERMZUB FUEHRUNGSBOLZEN J  
\* M 1 \*\*\*



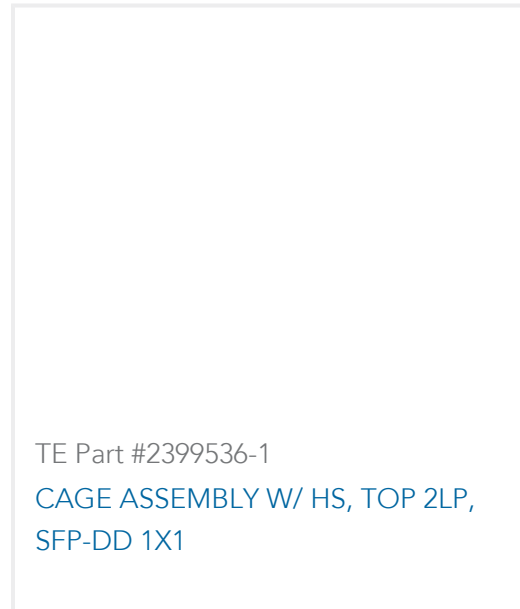
TE Part #6368062-8  
2X4 OFFSET STK MJ,SHLD,W/LED



TE Part #2304921-3  
ZSFP+ 1X8 CAGE ASSEMBLY, PRESS-  
FIT



TE Part #6-2345017-1  
QSFP-DD 1X1, CUST, W/ ZIPPER HS,  
LP



TE Part #2399536-1  
CAGE ASSEMBLY W/ HS, TOP 2LP,  
SFP-DD 1X1

## Documents

### CAD Files

[3D PDF](#)

[3D](#)

**Customer View Model**

[ENG\\_CVM\\_CVM\\_2007304-5\\_A.2d\\_dxf.zip](#)

English

**Customer View Model**

[ENG\\_CVM\\_CVM\\_2007304-5\\_A.3d\\_igs.zip](#)

English

**Customer View Model**

[ENG\\_CVM\\_CVM\\_2007304-5\\_A.3d\\_stp.zip](#)

English

By downloading the CAD file I accept and agree to the [Terms and Conditions](#) of use.

### Datasheets & Catalog Pages

[QSFP28/56 and zQSFP+ Interconnects](#)

English

### Product Specifications

[Application Specification](#)

English