

1SNK900634R0000 ✓ ACTIVE

ENTRELEC | ENTRELEC HTP600

TE Internal #: 1SNK900634R0000

Label, Blank Mark Details, Yellow, -55 – 110 °C [-67 – 230 °F], UL 94V-0, ENTRELEC HTP600, Terminal Block & Strip Marking

Accessories

[View on TE.com >](#)



Connectors > Terminal Blocks & Strips > Terminal Block & Strip Accessories > Terminal Block & Strip Marking Accessories



Marking Product Type: **Label**

Pre-Printed Mark Details: **Blank**

Primary Product Color: **Yellow**

Operating Temperature Range: **-55 – 110 °C [-67 – 230 °F]**

UL Flammability Rating: **UL 94V-0**

## Features

### Product Type Features

Marking Product Type	Label
----------------------	-------

### Configuration Features

Number of Digits per Marker - Vertical	25
Number of Digits per Marker - Horizontal	15
Number of Cards per Package	25
Pre-Printed Mark Details	Blank

### Body Features

Product Weight	10 g[.353 oz]
Primary Product Material	PVC & Adhesive Acrylic
Primary Product Color	Yellow

### Dimensions

Product Width	17 mm[.669 in]
Product Depth	17.65 mm
Product Length	17.65 mm[.695 in]
Product Height	35.35 mm[1.39 in]

### Usage Conditions

Installation Temperature Range	-5 – 40 °C[23 – 104 °F]
--------------------------------	-------------------------



Operating Temperature Range -55 – 110 °C[-67 – 230 °F]

**Industry Standards**

UL Flammability Rating UL 94V-0

**Product Compliance**

[For compliance documentation, visit the product page on TE.com>](#)

EU RoHS Directive 2011/65/EU	Compliant
EU ELV Directive 2000/53/EC	Compliant
China RoHS 2 Directive MIIT Order No 32, 2016	No Restricted Materials Above Threshold
EU REACH Regulation (EC) No. 1907/2006	Current ECHA Candidate List: JAN 2025 (247) Candidate List Declared Against: JUNE 2024 (241) Does not contain REACH SVHC
Halogen Content	Not Low Halogen - contains Br or Cl > 900 ppm.
Solder Process Capability	Not reviewed for solder process capability

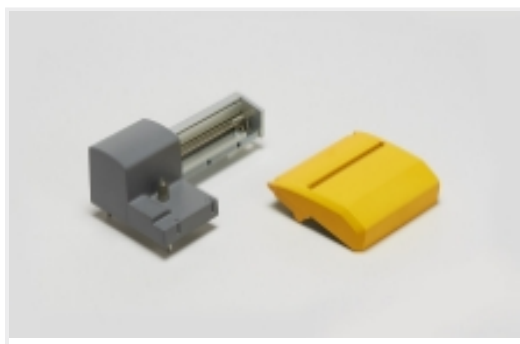
Product Compliance Disclaimer

This information is provided based on reasonable inquiry of our suppliers and represents our current actual knowledge based on the information they provided. This information is subject to change. The part numbers that TE has identified as EU RoHS compliant have a maximum concentration of 0.1% by weight in homogenous materials for lead, hexavalent chromium, mercury, PBB, PBDE, DBP, BBP, DEHP, DIBP, and 0.01% for cadmium, or qualify for an exemption to these limits as defined in the Annexes of Directive 2011/65/EU (RoHS2). Finished electrical and electronic equipment products will be CE marked as required by Directive 2011/65/EU. Components may not be CE marked. Additionally, the part numbers that TE has identified as EU ELV compliant have a maximum concentration of 0.1% by weight in homogenous materials for lead, hexavalent chromium, and mercury, and 0.01% for cadmium, or qualify for an exemption to these limits as defined in the Annexes of Directive 2000/53/EC (ELV). Regarding the REACH Regulation, the information TE provides on SVHC in articles for this part number is based on the latest European Chemicals Agency (ECHA) 'Guidance on requirements for substances in articles' posted at this URL: <https://echa.europa.eu/guidance-documents/guidance-on-reach>

**Compatible Parts**



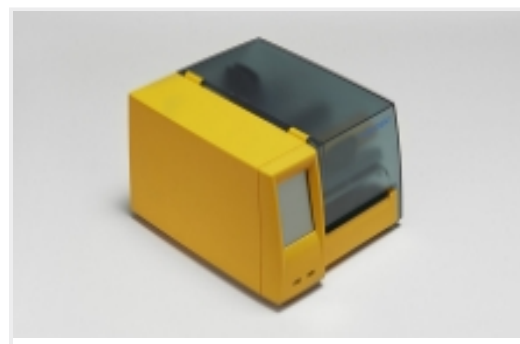
**Also in the Series | ENTRELEC HTP600**



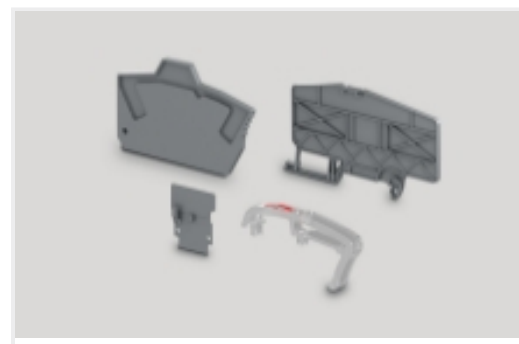
Printer Accessories(13)



Printer Ribbons(4)



Printers(1)



Terminal Block & Strip Insulating  
 Accessories(3)

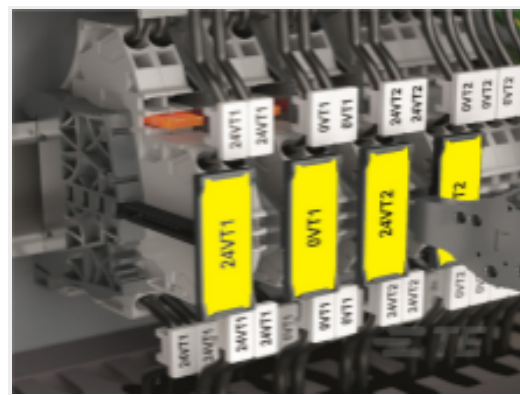


Terminal Block & Strip Marking  
 Accessories(113)

## Customers Also Bought



TE Part #1SNA235726R0000  
 HTP600-PL2M



TE Part #1SNK900633R0000  
 MCLH-YL



TE Part #1SNA235871R0000  
 VYT0615-YL



TE Part #1SNK147042R0000  
 MC512PA 4 (x100) Vertical



TE Part #1SNA235917R0000  
 VYT0817-YL



TE Part #1SNA235724R0000  
 HTP600-PLM



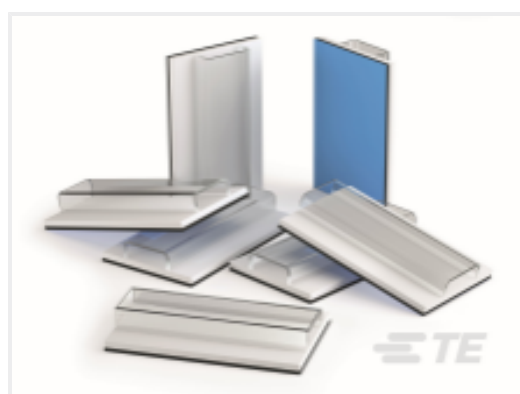
TE Part #1SNK147052R0000  
 MC512PA 5 (x100) Vertical



TE Part #1SNA235520R0000  
 PM124



TE Part #1SNA235817R0000  
 TAP1527



TE Part #1SNA235550R0000  
 RINGA12

## Documents



## Product Drawings

[MCLH-R1-YL](#)

English

---

## Datasheets & Catalog Pages

[Catalogue - HTP600 Thermal Transfer Printer and Markers](#)

English

[Datasheet - Htp600](#)

French

[MCLH-R1-YL](#)

English

[Datasheet - Htp600 Thermal-Transfer-Printer-Marker](#)

English

[Datasheet - Htp600 Thermal-Transfer-Printer-Marker](#)

French

[ENTRELEC Terminal Block - Master Catalog](#)

[ENTRELEC Terminal Block - Master Catalog](#)

English

[SNK SERIES TERMINAL BLOCKS](#)

English

[ENTRELEC Terminal Blocks Catalogue \(RUS\)](#)