



Industrial RJ45 IP20

TE Internal #: 1987236-1

Circular RJ45 Connector, Single Port, Plug, Shielded, Cat 5e, 4 Position, Wire & Cable, Signal, Polycarbonate GF, Gold (Au), Industrial RJ45 IP20

[View on TE.com >](#)

Connectors > Modular Jacks & Plugs > RJ45 Connectors



Modular Jack & Plug Interface Type: **Circular RJ45**

Port Configuration: **Single Port**

Modular Jacks & Plugs Products: **RJ Type Jacks & Plugs**

Connector Contact Density: **Standard**

Modular Connector Style: **Plug**

Features

Product Type Features

Modular Jack & Plug Interface Type	Circular RJ45
Modular Jacks & Plugs Products	RJ Type Jacks & Plugs
Modular Connector Style	Plug
Connector & Contact Terminates To	Wire & Cable

Configuration Features

Port Configuration	Single Port
Connector Contact Density	Standard
Number of Positions	4
Number of Loaded Positions	4

Body Features

Shield Plating Material	Nickel
Shield Material	Copper Alloy

Contact Features

Contact Current Rating (Max)	.5 A
------------------------------	------



Contact Mating Area Plating Material	Gold (Au)
Contact Base Material	Phosphor Bronze
Contact Mating Area Plating Material Thickness	1.27 µm[50 µin]

Mechanical Attachment

Connector Mounting Type	Panel Mount
-------------------------	-------------

Housing Features

Housing Material	Polycarbonate GF
------------------	------------------

Usage Conditions

Operating Temperature Range	-40 – 70 °C[-40 – 158 °F]
-----------------------------	---------------------------

Operation/Application

Indicator Type	No Indicator
Shielded	No, Yes
Circuit Application	Signal

Industry Standards

IP Rating	IP20
Performance Category	Cat 5e

Packaging Features

Packaging Quantity	1
Packaging Method	Carton

Product Compliance

[For compliance documentation, visit the product page on TE.com>](#)

EU RoHS Directive 2011/65/EU	Compliant with Exemptions
EU ELV Directive 2000/53/EC	Compliant
China RoHS 2 Directive MIIT Order No 32, 2016	Restricted Materials Above Threshold
EU REACH Regulation (EC) No. 1907/2006	Current ECHA Candidate List: JAN 2025 (247) Candidate List Declared Against: JAN 2025 (247) SVHC > Threshold: Pb (1% in 34748002072) Article Safe Usage Statements: Do not eat, drink or smoke when using this product. Wash thoroughly after handling. Recycle if possible and dispose of the article by following all applicable governmental regulations relevant to your geographic location.
Halogen Content	Not Low Halogen - contains Br or Cl > 900 ppm.

Solder Process Capability

Not applicable for solder process capability

Product Compliance Disclaimer

This information is provided based on reasonable inquiry of our suppliers and represents our current actual knowledge based on the information they provided. This information is subject to change. The part numbers that TE has identified as EU RoHS compliant have a maximum concentration of 0.1% by weight in homogenous materials for lead, hexavalent chromium, mercury, PBB, PBDE, DBP, BBP, DEHP, DIBP, and 0.01% for cadmium, or qualify for an exemption to these limits as defined in the Annexes of Directive 2011/65/EU (RoHS2). Finished electrical and electronic equipment products will be CE marked as required by Directive 2011/65/EU. Components may not be CE marked. Additionally, the part numbers that TE has identified as EU ELV compliant have a maximum concentration of 0.1% by weight in homogenous materials for lead, hexavalent chromium, and mercury, and 0.01% for cadmium, or qualify for an exemption to these limits as defined in the Annexes of Directive 2000/53/EC (ELV). Regarding the REACH Regulation, the information TE provides on SVHC in articles for this part number is based on the latest European Chemicals Agency (ECHA) 'Guidance on requirements for substances in articles' posted at this URL: <https://echa.europa.eu/guidance-documents/guidance-on-reach>

Compatible Parts



TE Part # 7-2301994-7
RJ45 JACK INT.MAG. 1GB LED 1X1
INV.



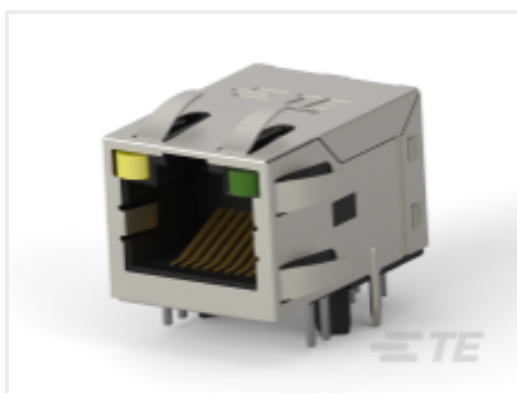
TE Part # 5-2337822-5
DISCR.ETH.MAG. 1GB SINGLE SMT
POE



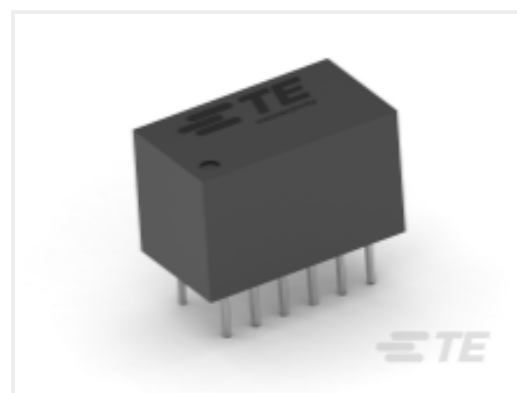
TE Part # 7-2301994-6
RJ45 JACK INT.MAG. 10/100 LED 1X1



TE Part # 5-2337824-2
DISCR.ETH.MAG. 1GB DUAL SMT



TE Part # 6-2301994-4
RJ45 JACK INT.MAG. 1GB LED 1X1
INV.



TE Part # 2337823-2
DISCR.ETH.MAG. 10/100 SINGLE THT
POE



TE Part # 5-2337825-3
DISCR.ETH.MAG. 1GB DUAL THT



TE Part # 5-2337822-4
DISCR.ETH.MAG. 10/100 SINGLE SMT
POE



TE Part # 1-2337992-8
RJ45 JACK MAG. POE 1GB LED 1X1



TE Part # 5-2337822-1
DISCR.ETH.MAG. 10/100 SINGLE SMT



TE Part # 3-2301994-6
RJ45 JACK INT.MAG. 10/100 LED 1X1



TE Part # 1-2301994-3
RJ45 JACK INT.MAG. 1GB LED 1X1
INV.



Also in the Series | **Industrial RJ45 IP20**



Customers Also Bought



Documents

Product Drawings

[RJ45 CONNECTOR IP20 45 DEG., INDUSTRIAL](#)

English

CAD Files

Customer View Model

[ENG_CVM_CVM_1987236-1_A.2d_dxf.zip](#)



English

[3D PDF](#)

3D

Customer View Model

[ENG_CVM_CVM_1987236-1_A.3d_igs.zip](#)

English

Customer View Model

[ENG_CVM_CVM_1987236-1_A.3d_stp.zip](#)

English

By downloading the CAD file I accept and agree to the [Terms and Conditions](#) of use.

Product Specifications

[Application Specification](#)

English

Instruction Sheets

[Instruction Sheet \(non U.S.\)](#)

English

Agency Approvals

[UL Report](#)

English