

179720-1 ✓ ACTIVE

Positive Lock | Mark II, Positive Lock 187

TE Internal #: 179720-1

Receptacle, Receptacle, 2 Position, Straight, UL 94V-0, Natural, Nylon, Cable Mount (Free-Hanging), Positive Lock 187, Crimp Terminal Housings

[View on TE.com >](#)



Terminals & Splices > Terminal Housings, Insulation Sleeves & Blocks > Crimp Terminal Housings



Terminal Type: **Receptacle**

Connector & Housing Type: **Receptacle**

Number of Positions: **2**

Terminal Orientation: **Straight**

UL Flammability Rating: **UL 94V-0**

Features

Product Type Features

Connector & Contact Terminates To	Wire & Cable
Sealable	No
Connector System	Wire-to-Board, Wire-to-Wire
Connector & Housing Type	Receptacle

Configuration Features

Number of Positions	2
---------------------	---

Body Features

Primary Product Color	Natural
-----------------------	---------

Contact Features

Terminal Type	Receptacle
Terminal Orientation	Straight
Contact Mating Retention	With

Mechanical Attachment



Mating Alignment Type	Polarization
Mating Retention Type	Latch
Mating Alignment	With
Connector Mounting Type	Cable Mount (Free-Hanging)

Housing Features

Housing Material	Nylon
Centerline (Pitch)	10 mm[.393 in]

Usage Conditions

Operating Temperature Range	-40 – 105 °C[-40 – 221 °F]
-----------------------------	----------------------------

Industry Standards

UL Flammability Rating	UL 94V-0
------------------------	----------

Packaging Features

Packaging Quantity	500
--------------------	-----

Product Compliance

[For compliance documentation, visit the product page on TE.com>](#)

EU RoHS Directive 2011/65/EU	Compliant
EU ELV Directive 2000/53/EC	Compliant
China RoHS 2 Directive MIIT Order No 32, 2016	No Restricted Materials Above Threshold
EU REACH Regulation (EC) No. 1907/2006	Current ECHA Candidate List: JAN 2025 (247) Candidate List Declared Against: JAN 2025 (247) Does not contain REACH SVHC
Halogen Content	Low Halogen - Br, Cl, F, I < 900 ppm per homogenous material. Also BFR/CFR/PVC Free
Solder Process Capability	Not applicable for solder process capability

Product Compliance Disclaimer

This information is provided based on reasonable inquiry of our suppliers and represents our current actual knowledge based on the information they provided. This information is subject to change. The part numbers that TE has identified as EU RoHS compliant have a maximum concentration of 0.1% by weight in homogenous materials for lead, hexavalent chromium, mercury, PBB, PBDE, DBP, BBP, DEHP, DIBP, and 0.01% for cadmium, or qualify for an exemption to these limits as defined in the Annexes of Directive 2011/65/EU (RoHS2). Finished electrical and electronic equipment products will be CE marked as required by Directive 2011/65/EU. Components may not be CE marked. Additionally, the part numbers that TE has identified as EU ELV compliant have a maximum concentration of 0.1% by weight in homogenous materials for lead, hexavalent chromium, and mercury, and 0.01% for cadmium, or qualify for an exemption to these limits as defined in the Annexes of Directive 2000/53/EC (ELV). Regarding the REACH Regulation, the information TE provides on SVHC in articles for this part number is based on the latest European Chemicals Agency (ECHA) 'Guidance on

requirements for substances in articles' posted at this URL: <https://echa.europa.eu/guidance-documents/guidance-on-reach>

Compatible Parts



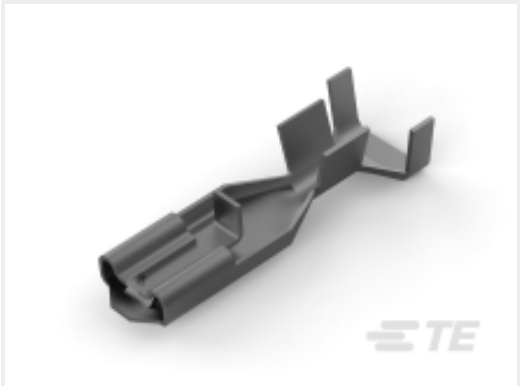
TE Part # 1969717-3
HSG, REC., POS-LOCK, MK I 2P, 6.35 SR YEL



TE Part # 170330-1
PL MKII 187 REC 24-20AWG PTBR LP



TE Part # 170331-1
PL MKII 187 REC 20-16AWG PTBR LP



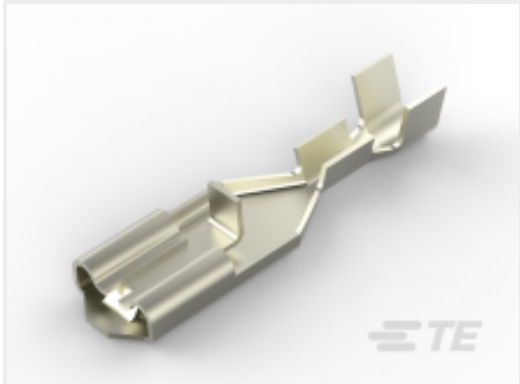
TE Part # 170326-1
187 PL MKII REC. 18-14AWG PTBR



TE Part # 926319-1
PL 250 REC HSG 2P NYLON BLACK



TE Part # 170324-1
187 PL MKII REC. 24-20AWG PTBR



TE Part # 170324-2
PL 187 RECEPTACLE 24-20 AWG 0.3 NPCU



TE Part # 1-1743102-1
2 POS PL 187 HOUSING NATURAL 6/6 NYLON



TE Part # 170325-5
187 PL MKII REC. 20-16AWG PTBR



TE Part # 170325-1
187 PL MKII REC. 20-16AWG PTBR



TE Part # 1-1743206-1
250 FLAG P-LOCK HSG 2P 12.0 GWT



TE Part # 170332-1
PL 187 RECEPTACLE 18-14 AWG PTPBR

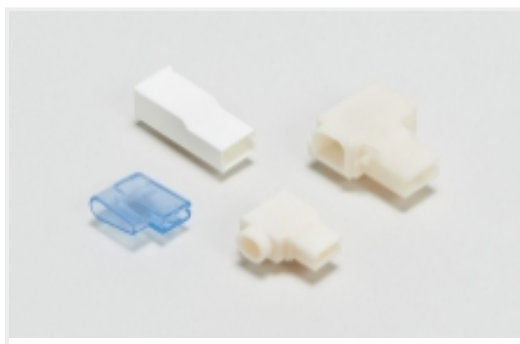


TE Part # 170330-2
PL 187 RECEPTACLE 24-20 AWG NPPHBZ

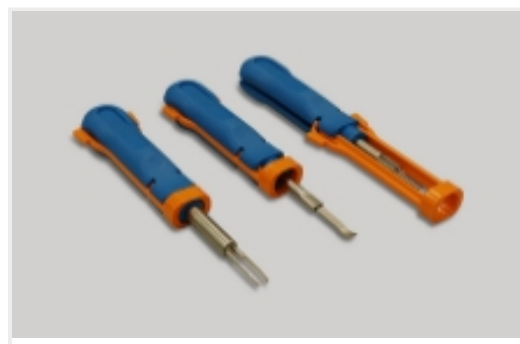


TE Part # 170326-5
187 PL MKII REC. 18-14AWG PTPB

Also in the Series | [Positive Lock 187](#)



Crimp Terminal Housings(76)



Insertion & Extraction Tools(2)

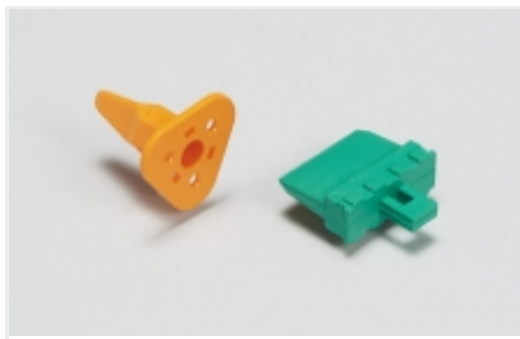


Insulation Boots & Sleeves(7)

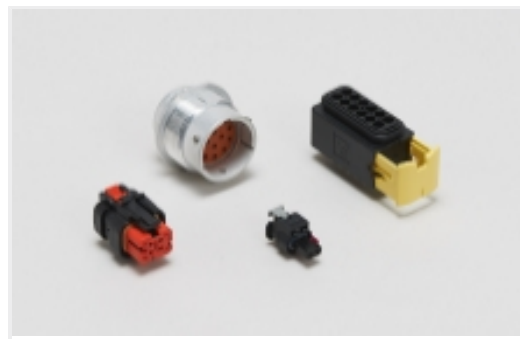


Quick Disconnects(57)

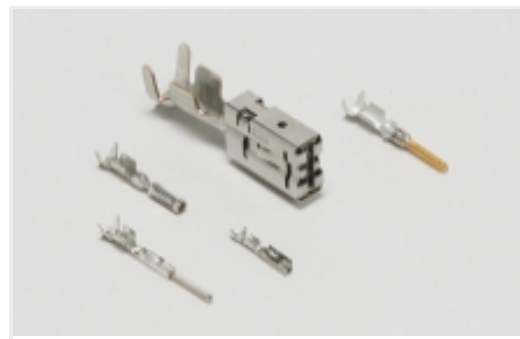
Also in the Series | **Mark II**



Automotive Connector Locks & Position Assurance(1)



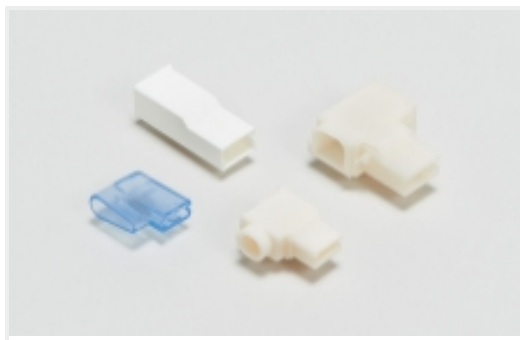
Automotive Housings(6)



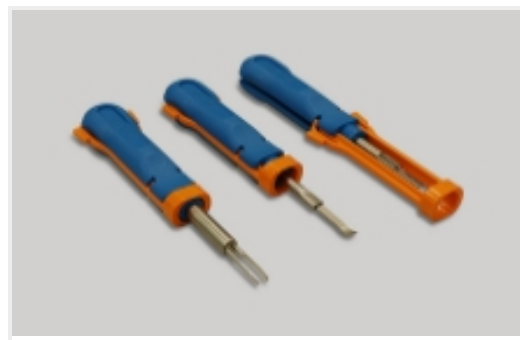
Automotive Terminals(3)



Connector Seals & Cavity Plugs(1)



Crimp Terminal Housings(76)



Insertion & Extraction Tools(2)



Quick Disconnects(57)

Customers Also Bought



TE Part #1743728-1
FG TERMINAL



TE Part #316768-2
POWER DBL LOCK PLUG HSG 1P RED



TE Part #316769-2
POWER D/LOCK CAP HSG 1P RED



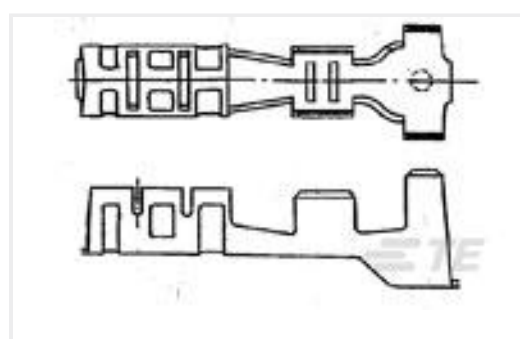
TE Part #5-177898-1
POWER DBL LOCK PLUG HSG 2P (GWT)



TE Part #CAT-SI261-P729
STD Temp Signal Double Lock Plug



TE Part #176498-1
POSITIVE LOCK 187 (4.8 MM) HOUSING



TE Part #175135-1
CONTACT 22-18 AWG 0.30 X 17.0 PTKLF-5



TE Part #170324-1
187 PL MKII REC. 24-20AWG PTBR



Documents

Product Drawings

187 HSG. PL MKII REC. 10mm 2P NAT

English

CAD Files

3D PDF

3D

Customer View Model

[ENG_CVM_CVM_179720-1_F.2d_dxf.zip](#)

English

Customer View Model

[ENG_CVM_CVM_179720-1_F.3d_igs.zip](#)

English

Customer View Model

[ENG_CVM_CVM_179720-1_F.3d_stp.zip](#)

English

By downloading the CAD file I accept and agree to the [Terms and Conditions](#) of use.

Datasheets & Catalog Pages

[FASTON Housings](#)

English

[Positive Lock Receptacles](#)

English

Product Specifications

[Product Specification](#)

English

Agency Approvals

[UL Report](#)

English