

1658526-5 ✓ ACTIVE



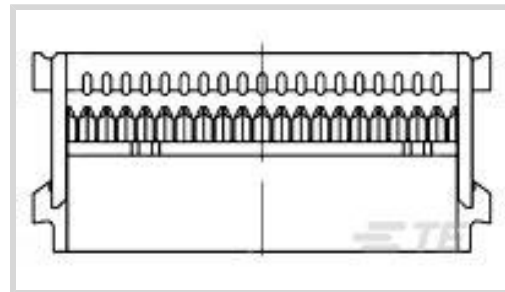
AMP-LATCH

TE Internal #: 1658526-5

Wire-to-Board, 10 Position, 2.54 mm [.1 in] Centerline, 2 Row, Receptacle, Wire & Cable, Signal, Cable Mount (Free-Hanging), Ribbon Cable Connectors

[View on TE.com >](#)

Connectors > PCB Connectors > Wire-to-Board Connectors > FFC, FPC & Ribbon Connectors > Ribbon Cable Connectors



Connector System: **Wire-to-Board**

Number of Positions: **10**

Centerline (Pitch): **2.54 mm [.1 in]**

Row-to-Row Spacing: **2.54 mm [.1 in]**

Number of Rows: **2**

Features

Product Type Features

Connector Product Type	Connector Assembly
Connector System	Wire-to-Board
Connector & Housing Type	Receptacle
Connector & Contact Terminates To	Wire & Cable

Configuration Features

Number of Positions	10
Number of Rows	2

Body Features

Primary Product Color	Blue
-----------------------	------

Contact Features

Contact Mating Area Plating Material	Gold (Au)
Wire Contact Termination Area Plating Thickness	2.54 – 5.08 μm [100 – 200 μin]
	30 μin
Wire Contact Termination Area Plating Material	Tin
Contact Current Rating (Max)	1 A

Termination Features

Rectangular Termination Post & Tail Width	.46 mm[.018 in]
Rectangular Termination Post & Tail Thickness	.36 mm[.014 in]



Termination Method to Wire & Cable

Insulation Displacement (IDC)

Mechanical Attachment

Mating Alignment Type

Polarization

Mating Retention

Without

Connector Mounting Type

Cable Mount (Free-Hanging)

Housing Features

Centerline (Pitch)

2.54 mm [.1 in]

Dimensions

Row-to-Row Spacing

2.54 mm [.1 in]

Usage Conditions

Operating Temperature Range

-55 – 125 °C [-67 – 257 °F]

Operation/Application

Circuit Application

Signal

Product Compliance

For compliance documentation, visit the product page on [TE.com](#)>

EU RoHS Directive 2011/65/EU

Compliant

EU ELV Directive 2000/53/EC

Compliant

China RoHS 2 Directive MIIT Order No 32, 2016

No Restricted Materials Above Threshold

EU REACH Regulation (EC) No. 1907/2006

Current ECHA Candidate List: JAN 2025 (247)

Candidate List Declared Against: JUNE 2024 (241)

Does not contain REACH SVHC

Halogen Content

Not Low Halogen - contains Br or Cl > 900 ppm.

Solder Process Capability

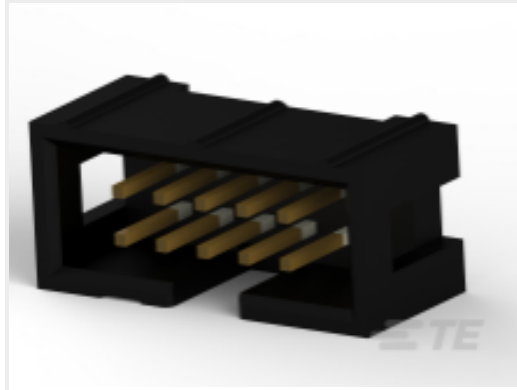
Not applicable for solder process capability

Product Compliance Disclaimer

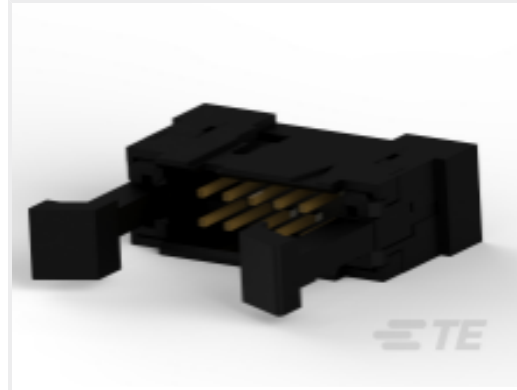
This information is provided based on reasonable inquiry of our suppliers and represents our current actual knowledge based on the information they provided. This information is subject to change. The part numbers that TE has identified as EU RoHS compliant have a maximum concentration of 0.1% by weight in homogenous materials for lead, hexavalent chromium, mercury, PBB, PBDE, DBP, BBP, DEHP, DIBP, and 0.01% for cadmium, or qualify for an exemption to these limits as defined in the Annexes of Directive 2011/65/EU (RoHS2). Finished electrical and electronic equipment products will be CE marked as required by Directive 2011/65/EU. Components may not be CE marked. Additionally, the part numbers that TE has identified as EU ELV compliant have a maximum concentration of 0.1% by weight in homogenous materials for lead, hexavalent chromium, and mercury, and 0.01% for cadmium, or qualify for an exemption to these limits as defined in the Annexes of Directive 2000/53/EC (ELV). Regarding the REACH Regulation, the information TE provides

on SVHC in articles for this part number is based on the latest European Chemicals Agency (ECHA) 'Guidance on requirements for substances in articles' posted at this URL: <https://echa.europa.eu/guidance-documents/guidance-on-reach>

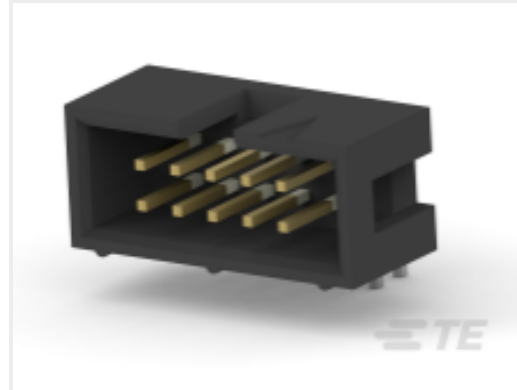
Compatible Parts



TE Part # 1761681-3
IDC LOW PRO HDR 10P VERT HT BLACK



TE Part # 1-111504-4
10 UNIV I/O, NO EARS, LEAD FREE



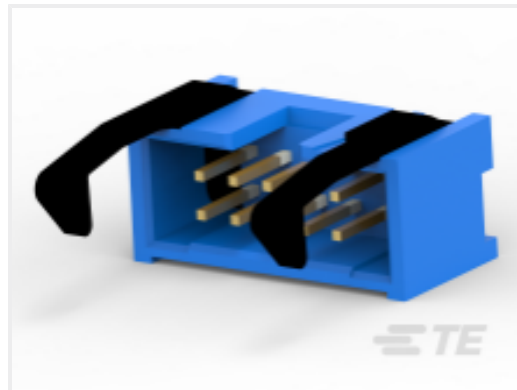
TE Part # 1761682-3
IDC LOW PRO HDR 10P RA HT BLACK



TE Part # CAT-AM74-UN384H
AMP-LATCH UNIVERSAL HEADERS



TE Part # 1761607-3
IDC LOW PRO HDR 10P RA LAT



TE Part # 2-1761606-3
IDC LOW PRO HDR 10P VERT LAT BLUE



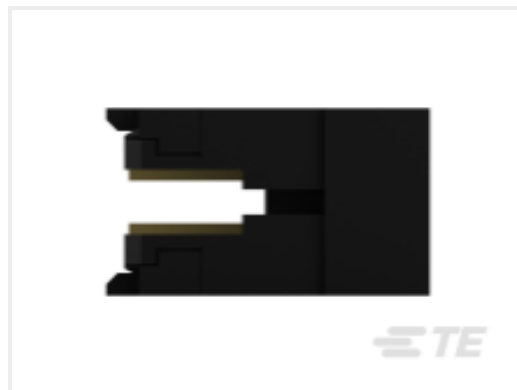
TE Part # 2-1761711-3
IDC LOW PRO HDR 10P VERT LA



TE Part # 1761683-3
IDC LOW PRO HDR 10P VERT HT BLACK



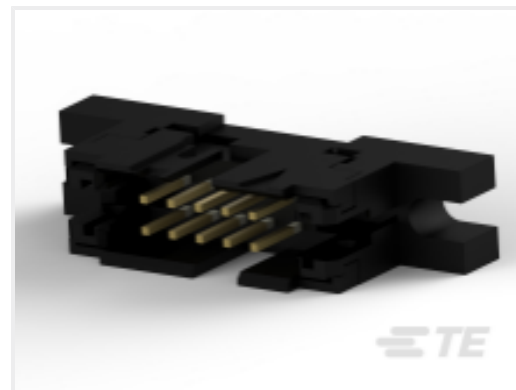
TE Part # 5104340-1
A/L LOW PRO HDR 10P RA HT



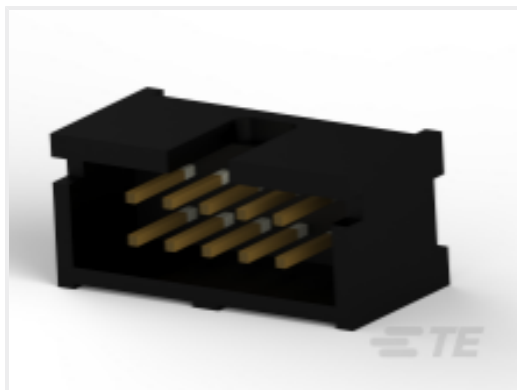
TE Part # 1-111446-4
10 UNIV I/O, NO EARS, LEAD FREE



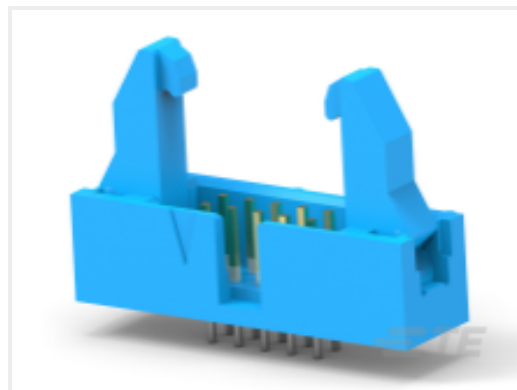
TE Part # 1761606-3
IDC LOW PRO HDR 10P VERT LAT BLK



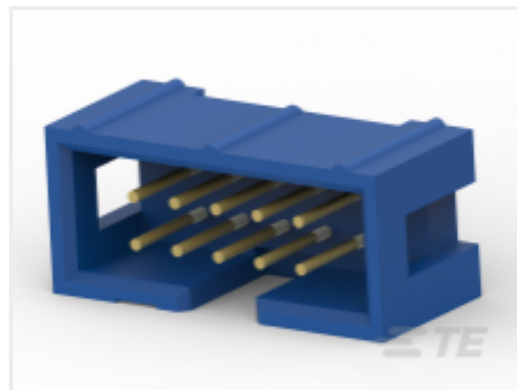
TE Part # 5111448-1
010 UNIV I/O 30DP SLOT



TE Part # 5103309-1
A/L LOW PRO HDR 10P VERT BLACK



TE Part # 1761686-3
IDC LOW PRO HDR 10P VERT LAT



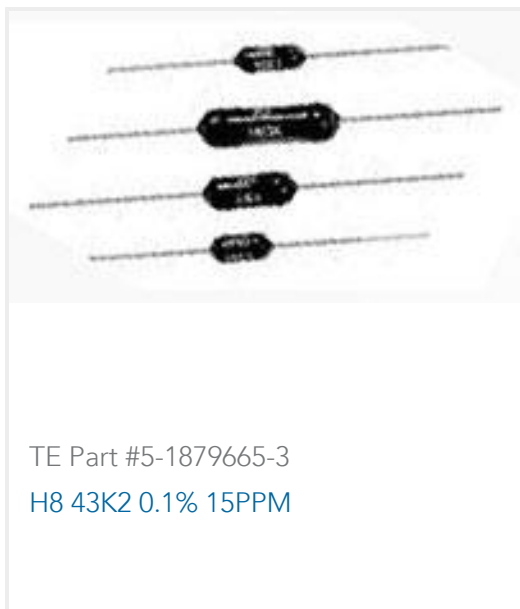
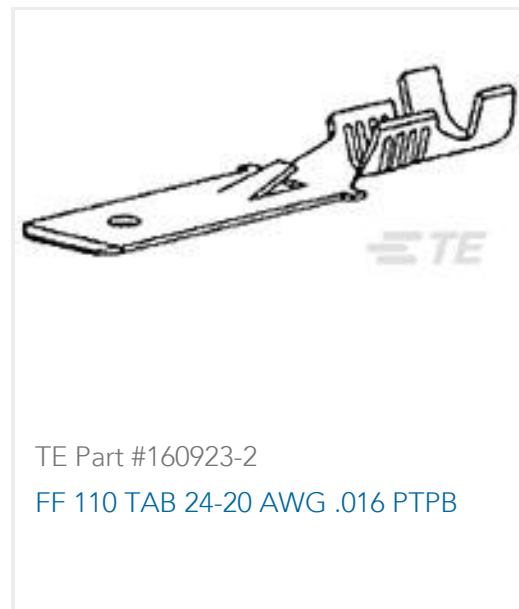
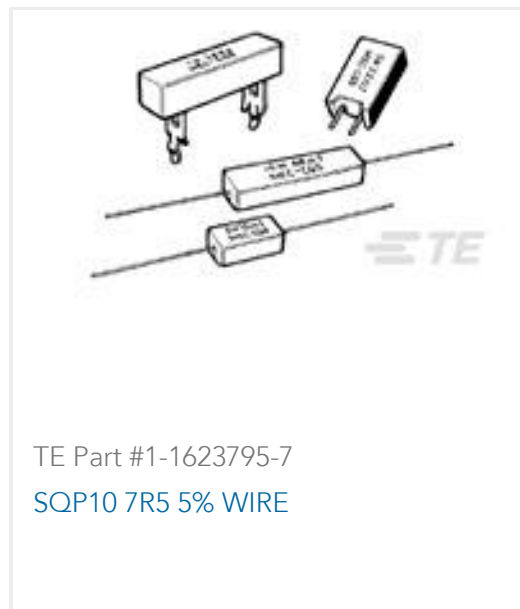
TE Part # 2-1761603-3
IDC LOW PRO HDR 10P VERT BLUE



TE Part # 5103311-1
A/L LOW PRO HDR 10P RA BLACK



Customers Also Bought



Documents

[CAD Files](#)

[3D PDF](#)

[3D](#)

[Customer View Model](#)

[ENG_CVM_CVM_1658526-5_C.2d_dxf.zip](#)

English

[Customer View Model](#)

[ENG_CVM_CVM_1658526-5_C.3d_igs.zip](#)

English



Customer View Model

[ENG_CVM_CVM_1658526-5_C.3d_stp.zip](#)

English

By downloading the CAD file I accept and agree to the [Terms and Conditions](#) of use.

Datasheets & Catalog Pages

[Ribbon Cable Interconnect Solutions](#)

English

Instruction Sheets

[Instruction Sheet \(U.S.\)](#)

English