

1612507-3 ✓ ACTIVE

DDR SODIMM, DDR2 SO DIMM

TE Internal #: 1612507-3

Double Data Rate (DDR), 5.2 mm [.205 in] Stack Height, Right Angle

Module Orientation, 200 Position, DDR SODIMM, SO DIMM

Sockets

[View on TE.com >](#)



Connectors > Socket Connectors > Memory Sockets > SO DIMM Sockets > DDR2 SO DIMM Sockets



DRAM Type: **Double Data Rate (DDR)**

Stack Height: **5.2 mm [.205 in]**

Module Orientation: **Right Angle**

Number of Positions: **200**

Centerline (Pitch): **.6 mm [.024 in]**

[All DDR2 SO DIMM Sockets \(28\)](#)

Features

Product Type Features

Connector & Contact Terminates To	Printed Circuit Board
Connector System	Cable-to-Board
DRAM Type	Double Data Rate (DDR)

Configuration Features

Number of Bays	2
Number of Keys	1
Number of Rows	2
Module Orientation	Right Angle
Number of Positions	200

Electrical Characteristics

DRAM Voltage	2.5 V
--------------	-------

Signal Characteristics



SGRAM Voltage	2.5 V
---------------	-------

Body Features

Retention Post Material	Copper Alloy
-------------------------	--------------

Latch Plating Material	Tin
------------------------	-----

Latch Material	Stainless Steel
----------------	-----------------

Module Key Type	SGRAM
-----------------	-------

Ejector Type	Locking
--------------	---------

Ejector Location	Both Ends
------------------	-----------

Connector Profile	Standard
-------------------	----------

Contact Features

Contact Current Rating (Max)	.5 A
------------------------------	------

Memory Socket Type	Memory Card
--------------------	-------------

Contact Base Material	Copper Alloy
-----------------------	--------------

PCB Contact Termination Area Plating Material	Gold Flash
---	------------

Contact Mating Area Plating Material	Gold Flash
--------------------------------------	------------

Termination Features

Insertion Style	Cam-In
-----------------	--------

Termination Method to PCB	Surface Mount
---------------------------	---------------

Mechanical Attachment

Connector Mounting Type	Board Mount
-------------------------	-------------

PCB Mount Retention Type	Solder Tail
--------------------------	-------------

Mating Alignment Type	Standard Keying
-----------------------	-----------------

PCB Mount Retention	With
---------------------	------

Housing Features

Housing Material	High Temperature Thermoplastic
------------------	--------------------------------

Housing Color	Black
---------------	-------

Centerline (Pitch)	.6 mm [.024 in]
--------------------	-----------------

Dimensions

Stack Height	5.2 mm [.205 in]
--------------	------------------

Row-to-Row Spacing	6.2 mm [.244 in]
--------------------	------------------

Usage Conditions

Operating Temperature Range	-55 – 85 °C [-67 – 185 °F]
-----------------------------	----------------------------



Operation/Application

Circuit Application	Power
---------------------	-------

Industry Standards

UL Flammability Rating	UL 94V-0
------------------------	----------

Packaging Features

Packaging Quantity	16
Packaging Method	Hard Tray

Product Compliance

[For compliance documentation, visit the product page on TE.com>](#)

EU RoHS Directive 2011/65/EU	Compliant
EU ELV Directive 2000/53/EC	Compliant
China RoHS 2 Directive MIIT Order No 32, 2016	No Restricted Materials Above Threshold
EU REACH Regulation (EC) No. 1907/2006	Current ECHA Candidate List: JAN 2025 (247) Candidate List Declared Against: JUNE 2022 (224) Does not contain REACH SVHC
Halogen Content	Low Halogen - Br, Cl, F, I < 900 ppm per homogenous material. Also BFR/CFR/PVC Free
Solder Process Capability	Reflow solder capable to 245°C

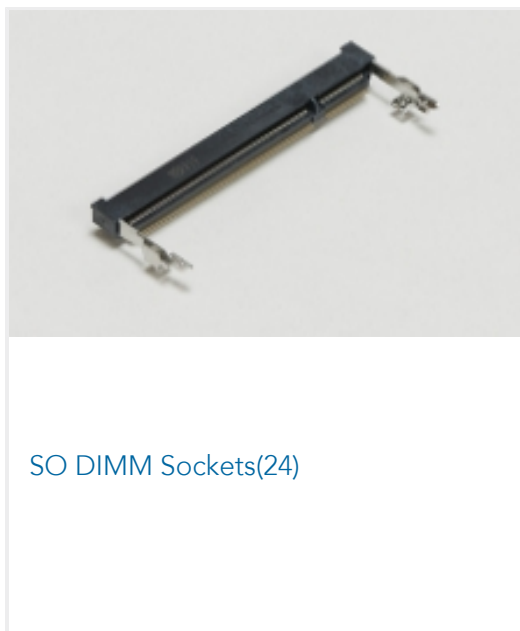
Product Compliance Disclaimer

This information is provided based on reasonable inquiry of our suppliers and represents our current actual knowledge based on the information they provided. This information is subject to change. The part numbers that TE has identified as EU RoHS compliant have a maximum concentration of 0.1% by weight in homogenous materials for lead, hexavalent chromium, mercury, PBB, PBDE, DBP, BBP, DEHP, DIBP, and 0.01% for cadmium, or qualify for an exemption to these limits as defined in the Annexes of Directive 2011/65/EU (RoHS2). Finished electrical and electronic equipment products will be CE marked as required by Directive 2011/65/EU. Components may not be CE marked. Additionally, the part numbers that TE has identified as EU ELV compliant have a maximum concentration of 0.1% by weight in homogenous materials for lead, hexavalent chromium, and mercury, and 0.01% for cadmium, or qualify for an exemption to these limits as defined in the Annexes of Directive 2000/53/EC (ELV). Regarding the REACH Regulation, the information TE provides on SVHC in articles for this part number is based on the latest European Chemicals Agency (ECHA) 'Guidance on requirements for substances in articles' posted at this URL: <https://echa.europa.eu/guidance-documents/guidance-on-reach>

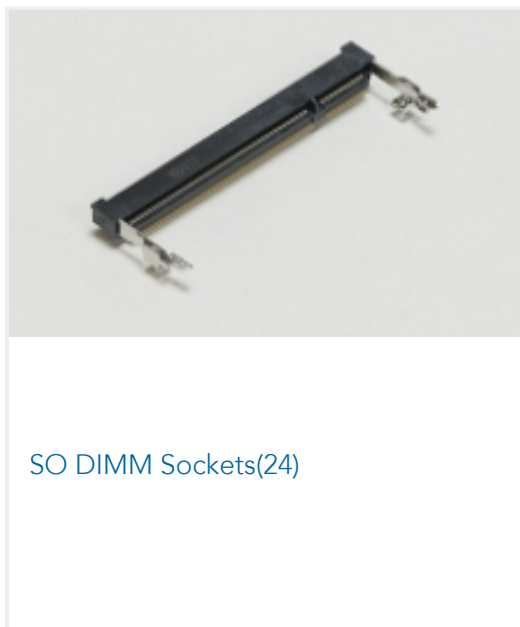
Compatible Parts



Also in the Series | **DDR SODIMM**



Also in the Series | **DDR2 SO DIMM**



Customers Also Bought





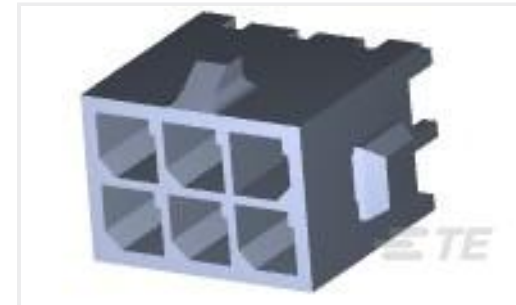
TE Part #5767054-2
MICT, RECPT, 76, ASSY, PDNI



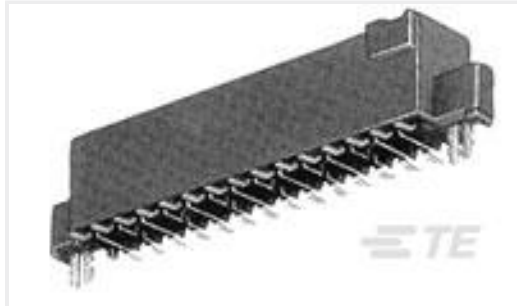
TE Part #1734327-2
MINI USB, TYPE A, R/A, SMT



TE Part #5747150-9
09 RCPT SP/FMS INSRT



TE Part #3-794632-6
06P MICRO MNL ASSY, VRT, HDR, LF



TE Part #5-104652-5
50 50/50 GRID DRST SFMNT RCPT



TE Part #4-794682-8
18P MICRO MNL ASSY, VRT, THRU, L

Documents

Product Drawings

HARD TRAY ASS'Y DDR SODIMM SOC

English

CAD Files

Customer View Model

[ENG_CVM_CVM_1612507-3_D1.2d_dxf.zip](#)

English

3D PDF

3D

Customer View Model

[ENG_CVM_CVM_1612507-3_D1.3d_igs.zip](#)

English

Customer View Model

[ENG_CVM_CVM_1612507-3_D1.3d_stp.zip](#)

English

By downloading the CAD file I accept and agree to the [Terms and Conditions](#) of use.

Product Specifications

Application Specification

English