



FPC

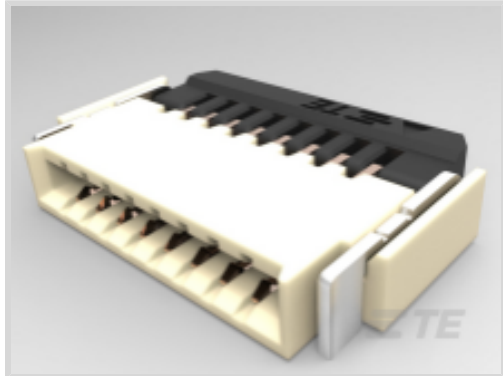
TE Internal #: 1-2328702-0

.5 mm Centerline, Right Angle, Surface Mount, Back Flip-Lock

Actuator, Gold Flash, 10 Position, FPC Connectors

[View on TE.com >](#)

Connectors > PCB Connectors > Wire-to-Board Connectors > FFC, FPC & Ribbon Connectors > FPC Connectors



Centerline (Pitch): .5 mm

Mating Retention Type: **Zero Insertion Force (ZIF)**

PCB Mount Orientation: **Right Angle**

Contact Mating Location: **Dual Side**

Termination Method to PCB: **Surface Mount**

**Features**

**Product Type Features**

PCB Connector Type	PCB Mount Receptacle
Connector & Contact Terminates To	Printed Circuit Board
Connector Product Type	Connector Assembly
Connector System	Wire-to-Board
FPC Actuator Type	Back Flip-Lock

**Configuration Features**

Compatible With Wire & Cable Type	FFC, FPC
Number of Rows	1
PCB Mount Orientation	Right Angle
Number of Positions	10

**Electrical Characteristics**

Operating Voltage	50 VDC
-------------------	--------

**Body Features**

Primary Product Color	Natural
Actuator Color	Black

**Contact Features**

Contact Current Rating (Max)	.5 A
Contact Shape & Form	Standard Flat



Contact Layout	Inline
Contact Base Material	Copper Alloy
PCB Contact Termination Area Plating Material	Gold
Contact Mating Location	Dual Side
Contact Mating Area Plating Material	Gold Flash

### Termination Features

Termination Method to PCB	Surface Mount
---------------------------	---------------

### Mechanical Attachment

Mating Alignment	With
Mating Retention Type	Zero Insertion Force (ZIF)

### Housing Features

Housing Material	LCP
Centerline (Pitch)	.5 mm

### Dimensions

Accepts Flex Cable Thickness	.3 mm[.01 in]
Connector Height	1 mm[.039 in]
Connector Length	7 mm

### Usage Conditions

Operating Temperature Range	-40 – 85 °C[-40 – 185 °F]
-----------------------------	---------------------------

### Packaging Features

Packaging Method	Tape & Reel
------------------	-------------

## Product Compliance

[For compliance documentation, visit the product page on TE.com>](#)

EU RoHS Directive 2011/65/EU	Compliant
EU ELV Directive 2000/53/EC	Out of Scope
China RoHS 2 Directive MIIT Order No 32, 2016	No Restricted Materials Above Threshold
EU REACH Regulation (EC) No. 1907/2006	Current ECHA Candidate List: JAN 2025 (247) Candidate List Declared Against: JAN 2025 (247) Does not contain REACH SVHC
Halogen Content	Low Halogen - Br, Cl, F, I < 900 ppm per homogenous material. Also BFR/CFR/PVC

Free

Solder Process Capability

Not reviewed for solder process capability

Product Compliance Disclaimer

This information is provided based on reasonable inquiry of our suppliers and represents our current actual knowledge based on the information they provided. This information is subject to change. The part numbers that TE has identified as EU RoHS compliant have a maximum concentration of 0.1% by weight in homogenous materials for lead, hexavalent chromium, mercury, PBB, PBDE, DBP, BBP, DEHP, DIBP, and 0.01% for cadmium, or qualify for an exemption to these limits as defined in the Annexes of Directive 2011/65/EU (RoHS2). Finished electrical and electronic equipment products will be CE marked as required by Directive 2011/65/EU. Components may not be CE marked. Additionally, the part numbers that TE has identified as EU ELV compliant have a maximum concentration of 0.1% by weight in homogenous materials for lead, hexavalent chromium, and mercury, and 0.01% for cadmium, or qualify for an exemption to these limits as defined in the Annexes of Directive 2000/53/EC (ELV). Regarding the REACH Regulation, the information TE provides on SVHC in articles for this part number is based on the latest European Chemicals Agency (ECHA) 'Guidance on requirements for substances in articles' posted at this URL: <https://echa.europa.eu/guidance-documents/guidance-on-reach>

### Compatible Parts




TE Part # 1-2495219-2  
0.5 pitch, 12pin, Vertical, GF, SMT



TE Part # 1-2495219-4  
0.5 pitch, 14pin, Vertical, GF, SMT



TE Part # 1-2495219-0  
0.5 pitch, 10pin, Vertical, GF, SMT



TE Part # 5-2328702-0  
50 PIN 0.5MMP FPC CONN, BACK FLIP LOCK

### Customers Also Bought



TE Part #6-2176403-8  
3550 620R 1%



TE Part #2176364-7  
RQ 0402 5K36 0.1% 10PPM 5K RL



TE Part #1-2176369-8  
RQ 0603 60R4 0.1% 10PPM 5K RL



TE Part #3-2176403-7  
3550 33R 1%



TE Part #3-2176304-4  
RP 1E 0.1W 22R1 0.1% 25PPM 5K RL



TE Part #3-5499141-0  
A/L UNIV HDR 50P RA LAT BLU



TE Part #1SNG626147R0000  
EP-SGL-PG9-BL-B



TE Part #5-2176403-3  
3550 150R 1%



TE Part #1-534206-3  
26 MODII VRT DR CE 100/115



TE Part #3-1879215-6  
CPF 0402 9K53 0.1% 25PPM 1K RL

## Documents

### CAD Files

[3D PDF](#)

[3D](#)

**Customer View Model**

[ENG\\_CVM\\_CVM\\_1-2328702-0\\_A.2d\\_dxf.zip](#)

English

**Customer View Model**

[ENG\\_CVM\\_CVM\\_1-2328702-0\\_A.3d\\_igs.zip](#)

English

**Customer View Model**

[ENG\\_CVM\\_CVM\\_1-2328702-0\\_A.3d\\_stp.zip](#)

English

By downloading the CAD file I accept and agree to the [Terms and Conditions](#) of use.

### Datasheets & Catalog Pages

[1-1773959-7-FPC-Connectors-CN](#)

English

### Product Specifications

[Product Specification](#)

English