



Relays & Contactors > Electromechanical Relays



Relay & Contactor Type: **High Voltage Contactor**

Current Type: **DC**

Contact Arrangement: **1 Form X SPST-NO**

Contact Current Rating: **500 A**

Coil Voltage Rating: **9 – 36 VDC**

Features

Product Type Features

Relay & Contactor Type	High Voltage Contactor
------------------------	------------------------

Configuration Features

Relay Options	Not RF Rated, Power Switching
Contact Arrangement	1 Form X SPST-NO

Electrical Characteristics

Coil Resistance	3.14 Ω
Contact Switching Voltage (Max)	900 VDC
Contact Current Rating	500 A
Coil Voltage Rating	9 – 36 VDC
Contact Voltage Rating	12 – 900 VDC

Contact Features

Contact Material	Copper
------------------	--------

Termination Features

Main Termination & Connection Type	Stud Terminals
Coil Termination & Connection Type	Flying Leads

Mechanical Attachment

Product Mounting Feature Type	Flange with Mounting Holes
-------------------------------	----------------------------



Product Mount Type

Chassis Mount

Operation/Application

Current Type

DC

Product Compliance

[For compliance documentation, visit the product page on TE.com>](#)

EU RoHS Directive 2011/65/EU

Compliant

EU ELV Directive 2000/53/EC

Compliant

China RoHS 2 Directive MIIT Order No 32, 2016

No Restricted Materials Above Threshold

EU REACH Regulation (EC) No. 1907/2006

Current ECHA Candidate List: JAN 2025 (247)
 Candidate List Declared Against: JUNE 2024 (241)
 Does not contain REACH SVHC

Halogen Content

Low Halogen - Br, Cl, F, I < 900 ppm per homogenous material. Also BFR/CFR/PVC Free

Solder Process Capability

Hand solderable with lead free solder

Product Compliance Disclaimer

This information is provided based on reasonable inquiry of our suppliers and represents our current actual knowledge based on the information they provided. This information is subject to change. The part numbers that TE has identified as EU RoHS compliant have a maximum concentration of 0.1% by weight in homogenous materials for lead, hexavalent chromium, mercury, PBB, PBDE, DBP, BBP, DEHP, DIBP, and 0.01% for cadmium, or qualify for an exemption to these limits as defined in the Annexes of Directive 2011/65/EU (RoHS2). Finished electrical and electronic equipment products will be CE marked as required by Directive 2011/65/EU. Components may not be CE marked. Additionally, the part numbers that TE has identified as EU ELV compliant have a maximum concentration of 0.1% by weight in homogenous materials for lead, hexavalent chromium, and mercury, and 0.01% for cadmium, or qualify for an exemption to these limits as defined in the Annexes of Directive 2000/53/EC (ELV). Regarding the REACH Regulation, the information TE provides on SVHC in articles for this part number is based on the latest European Chemicals Agency (ECHA) 'Guidance on requirements for substances in articles' posted at this URL: <https://echa.europa.eu/guidance-documents/guidance-on-reach>

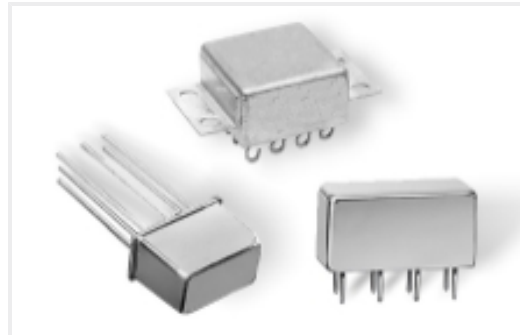
Compatible Parts



Also in the Series | Kilovac EV200



DC Contactors(17)

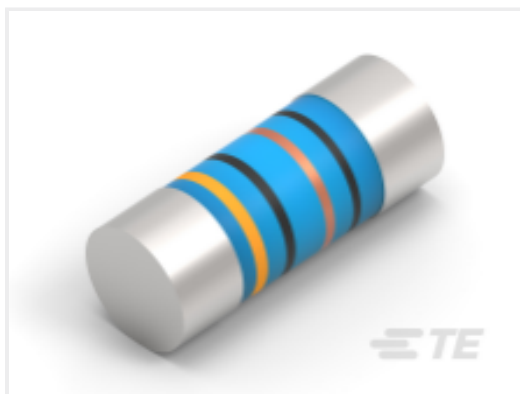


DC Relays(17)



Electromechanical Relays(17)

Customers Also Bought



TE Part #2-2176316-0
MELF SMA_A 3K9 0.1% 15PPM 0207
1W



TE Part #5039822001
TPEM-NR6-0-STK



TE Part #1618410-3
EV202MVAND=RELAY,DPST-NO 12V



TE Part #843036-000
101A031-3-0



TE Part #302634-000
ST18-2-55-22-90



TE Part #3-2176344-6
CRGCO 1206 680K 5%



TE Part #7321453001
VG-95218-T024-K006



TE Part #1623930-5
CFR25 5% 10R



TE Part #1SNG607016R0000
EP-LN-M40-LGR-A



TE Part #9-212437-2
8 POSN CIRC DIN PLUG ASSEMBLY

Documents

[CAD Files](#)

[3D PDF](#)

[3D](#)

[Customer View Model](#)

[ENG_CVM_CVM_1-1618002-8_E.2d_dxf.zip](#)

[English](#)

[Customer View Model](#)



[ENG_CVM_CVM_1-1618002-8_E.3d_igs.zip](#)

English

Customer View Model

[ENG_CVM_CVM_1-1618002-8_E.3d_stp.zip](#)

English

By downloading the CAD file I accept and agree to the [Terms and Conditions](#) of use.

Datasheets & Catalog Pages

[5-1773450-5_sec7_EV200A](#)

English

KILOVAC EV200 Series Contactor

English

Agency Approvals

[CE Declaration of Conformity](#)

English