

## 2 Way Broadband Combiner from 700 MHz to 6 GHz SMA Female Input and Output rated 125 Watts



### PE20S0032

#### Features

- 0.7 to 6 GHz Frequency
- 125 watt max power
- Insertion Loss: < 0.9 dB
- Phase Balance:  $\pm 5$  degrees
- Amplitude Balance:  $\pm 0.3$  dB
- Isolation: >8 dB
- High Power Handling Capability

#### Applications

- Communications Systems
- Power Combining
- PCS,GSM,LTE, Cellular
- Amplifier Systems
- Amplifier Power Combining
- Wireless Infrastructures
- Defense Applications

#### Description

PE20S0032 is a passive 2 way High Power Broadband RF Combiner with 50 ohm SMA connectors operating from 0.7 to 6 GHz, with max power at 125 watts. The PE20S0032 has greater than 8 dB typical isolation, less than 0.9 dB typical low insertion loss and a Max VSWR of 1.35:1; along with a phase balance of  $\pm 5$  degrees and an amplitude balance of  $\pm 0.3$  dB. The RF Combiner operates in a temperature range from -55°C to 85°C.

#### Electrical Specifications

Description	Minimum	Typical	Maximum	Units
Design				
Number of Input Ports		2		Reactive
Frequency Range	0.7		6	GHz
Impedance		50		Ohms
Input VSWR			1.35:1	
Output VSWR			1.35:1	
Insertion Loss			0.9	dB
Isolation	8			dB
Amplitude Balance		$\pm 0.3$		dB
Phase Balance		$\pm 5$		Degrees
Power Handling (CW)			125	Watts

#### Mechanical Specifications

Size	
Length	5.2 in [132.08 mm]
Width	3 in [76.2 mm]
Height	1.1 in [27.94 mm]
Weight	1.25 lbs [566.99 g]
Configuration	
Package Type	Connectorized
Input Connector	SMA Female
Output Connectors	SMA Female

## 2 Way Broadband Combiner from 700 MHz to 6 GHz SMA Female Input and Output rated 125 Watts



### PE20S0032

---

#### Environmental Specifications

**Temperature**

Operating Range

-55 to +85 deg C

**Compliance Certifications** (see [product page](#) for current document)

#### Plotted and Other Data

Notes:

#### Typical Performance Data

2 Way Broadband Combiner from 700 MHz to 6 GHz SMA Female Input and Output rated 125 Watts from Pasternack Enterprises has same day shipment for domestic and International orders. Our RF, microwave and millimeter wave products maintain a 99.4% availability and are part of the broadest selection in the industry.

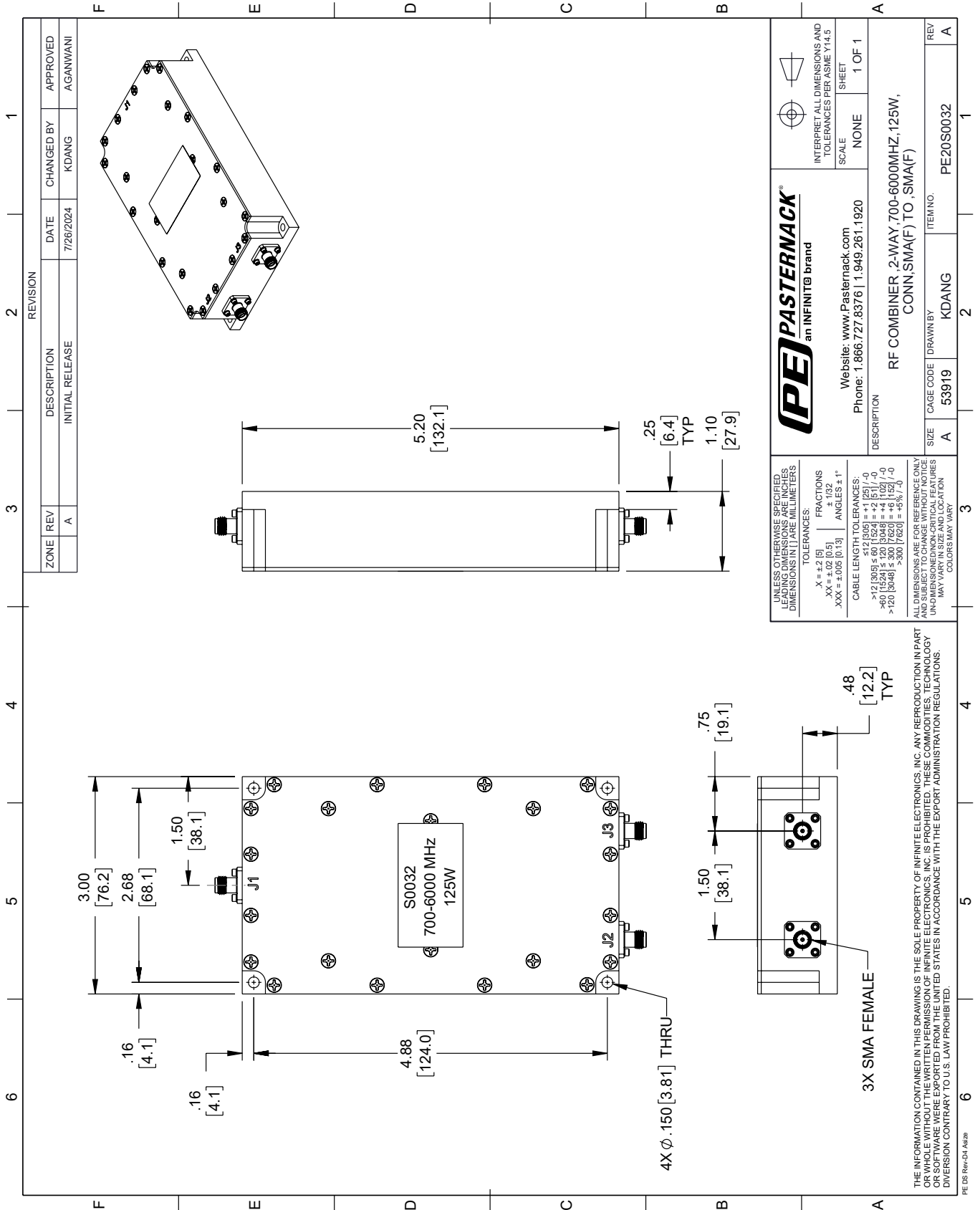
Click the following link (or enter part number in "SEARCH" on website) to obtain additional part information including price, inventory and certifications: [2 Way Broadband Combiner from 700 MHz to 6 GHz SMA Female Input and Output rated 125 Watts PE20S0032](#)

URL: <https://www.pasternack.com/2-way-sma-broadband-power-combiner-700-mhz-6-ghz-125-watts-pe20s0032-p.aspx>

The information contained within this document is accurate to the best of our knowledge and representative of the part described herein. It may be necessary to make modifications to the part and/or the documentation of the part in order to impliment improvements. Pasternack Enterprises reserves the right to make such changes as required. Unless otherwise stated, all specifications are nominal. Pasternack Enterprises does not make any representation or warranty regarding the suitability of the part described herein for any particular purpose, and Pasternack Enterprises does not assume liability arising out of the use of any part or document.

# PE20S0032 CAD Drawing

2 Way Broadband Combiner from 700 MHz to 6 GHz SMA Female Input and Output rated 125 Watts



REVISION		DATE	CHANGED BY	APPROVED
ZONE	REV	DESCRIPTION	INITIAL RELEASE	
	A			AGANWANI

**PE PASTERNAK**  
an INFINITI® brand

Website: [www.Pasternack.com](http://www.Pasternack.com)  
Phone: 1.866.727.8376 | 1.949.261.1920

INTERPRET ALL DIMENSIONS AND TOLERANCES PER ASME Y14.5

SCALE: NONE  
SHEET: 1 OF 1

DESCRIPTION: RF COMBINER, 2-WAY, 700-6000MHZ, 125W, CONN,SMA(F) TO ,SMA(F)

SIZE	A	CAGE CODE	53919	DRAWN BY	KDANG	ITEM NO.	PE20S0032	REV	A
------	---	-----------	-------	----------	-------	----------	-----------	-----	---

UNLESS OTHERWISE SPECIFIED, LEADING DIMENSIONS ARE IN INCHES. DIMENSIONS IN [ ] ARE MILLIMETERS.

TOLERANCES:  
 .X = ±.2 [5]      FRACTIONS ± 1/32  
 .XX = ±.02 [0.5]      ANGLES ± 1°  
 .XXX = ±.005 [0.13]

CABLE LENGTH TOLERANCES:  
 >12 [305] ≤ 60 [1524] = ±.1 [25] / -0  
 >60 [1524] ≤ 120 [3048] = ±.4 [102] / -0  
 >120 [3048] ≤ 300 [7620] = ±.6 [152] / -0  
 >300 [7620] = ±.6% / -0

ALL DIMENSIONS ARE FOR REFERENCE ONLY. UNDIMENSIONED/NON-CRITICAL FEATURES MAY VARY IN SIZE AND LOCATION. COLORS MAY VARY.

THE INFORMATION CONTAINED IN THIS DRAWING IS THE SOLE PROPERTY OF INFINITE ELECTRONICS, INC. ANY REPRODUCTION IN PART OR WHOLE WITHOUT THE WRITTEN PERMISSION OF INFINITE ELECTRONICS, INC. IS PROHIBITED. THESE COMMODITIES, TECHNOLOGY OR SERVICE ARE HEREIN EXPORTED FROM THE UNITED STATES IN ACCORDANCE WITH THE EXPORT ADMINISTRATION REGULATIONS. DIVERSION CONTRARY TO U.S. LAW PROHIBITED.

PE DS Rev-04 Add2