

## General Description

BDE-BW33X1XPX is a 2.4-GHz Wi-Fi 6 and Bluetooth Low Energy 5.4 combo wireless module series based on TI's 10<sup>th</sup> generation connectivity combo chip CC3301/CC3300 which is based upon proven technology and complements of TI integrated devices for connectivity portfolio. This module series is ideal for use in cost sensitive embedded applications with a Linux or RTOS host running TCP/IP, where the peak throughput requirement is 50 Mbps maximum at the IP layer. BDE-BW330XXPX module series could be the best choice for bringing the efficiency of Wi-Fi 6 to embedded device applications with a small PCB footprint and highly optimized bill of materials with lower cost. The module is backward compatible with Wi-Fi 4 (802.11 b/g/n) and Wi-Fi 5 (802.11 ac).

In order to fulfil different integration requirements, BDE provides different variants. They are listed in [Table 1](#).

**Table 1. Module Variants**

Orderable Part Number	Connectivity	Antenna Options	Antenna Diversity Support
BDE-BW3301NP1	Wi-Fi 6 2.4-GHz SISO & BLE 5.4	ANT pin	Not supported
BDE-BW3301UP1	Wi-Fi 6 2.4-GHz SISO & BLE 5.4	U.FL connector	Not supported
BDE-BW3301AP1	Wi-Fi 6 2.4-GHz SISO & BLE 5.4	PCB trace antenna	Not supported
BDE-BW3301NP2	Wi-Fi 6 2.4-GHz SISO & BLE 5.4	ANT pin	Supported
BDE-BW3301UP2	Wi-Fi 6 2.4-GHz SISO & BLE 5.4	U.FL connector	Supported
BDE-BW3300NP1	Wi-Fi 6 2.4-GHz SISO	ANT pin	Not supported
BDE-BW3300UP1	Wi-Fi 6 2.4-GHz SISO	U.FL connector	Not supported
BDE-BW3300AP1	Wi-Fi 6 2.4-GHz SISO	PCB trace antenna	Not supported
BDE-BW3300NP2	Wi-Fi 6 2.4-GHz SISO	ANT pin	Supported
BDE-BW3300UP2	Wi-Fi 6 2.4-GHz SISO	U.FL connector	Supported

## Key Features

- Highly optimized Wi-Fi 6 and Bluetooth Low Energy 5.4 system for low cost embedded IoT applications
- Seamless integration with any processor or MCU host capable of running a TCP/IP stack
- Integrated 2.4-GHz PA for complete wireless solution with up to +20 dBm output power
- Application throughput up to 50 Mbps
- Wi-Fi 6
  - 2.4 GHz, 20 MHz, single spatial stream
  - MAC, baseband, and RF transceiver with support for IEEE 802.11 b/g/n/ax
  - Target wake time (TWT), OFDMA, MU-MIMO (Downlink), Basic Service Set Coloring, and trigger frame for improved efficiency
  - Hardware-based encryption and decryption supporting WPA2 and WPA3
  - Excellent interoperability
  - Support for 4 bit SDIO or SPI host interfaces
- Bluetooth Low Energy 5.4
  - LE Coded PHYs (Long Range), LE 2M PHY (High Speed) and Advertising Extension
  - Host controller interface (HCI) transport with option for UART or shared SDIO
- Enhanced Security
  - Secured host interface
  - Firmware authentication
  - Anti-rollback protection
- Multirole support (for example, concurrent STA and AP) to connect with Wi-Fi devices on different RF channels (Wi-Fi networks)
- Optional antenna diversity or selection
- 3-wire or 1-wire PTA for external coexistence with additional 2.4-GHz radios (for example, Thread or Zigbee)
- Operating temperature: -40°C to +85°C
- Power Management
  - VDD\_1V8: 1.62 V - 1.98 V
  - VDD\_3V3: 2.1 V - 4.2 V
- Clock Source
  - On-board 40 MHz XTAL fast clock
  - External 32.768-kHz slow clock by default
- Antenna Options
  - ANT pin for external antenna
  - U.FL connector for external antenna
  - Integrated PCB trace antenna
- Package
  - LGA-64, 13.4-mm x 13.3-mm x 2-mm
  - LGA-64, 18.4-mm x 13.3-mm x 2-mm
  - Pin to Pin Compatible with TI's WL1837MOD
  - Pin to Pin Compatible with BDE's BDE-BW2837

- Qualification and Regulatory Compliance
  - Bluetooth SIG
  - FCC
  - IC
  - CE-RED

## Applications

- Grid Infrastructure
  - Electricity Meter
  - String Inverter
  - Micro Inverter
  - Energy Storage Power Conversion System (PCS)
  - EV Charging Infrastructure
- Building and Home Automation
  - HVAC Controller
  - HVAC Gateway
  - Thermostat
  - Building Security Gateway
  - Garage Door System
  - IP Network Camera/ Video Doorbell
  - Wireless Security Camera
- Appliances
  - Refrigerator & Freezer
  - Oven
  - Washer & Dryer
  - Residential Water Heater & Heating System
  - Air Purifier & Humidifier
  - Coffee Machine
  - Air Conditioner Indoor Unit
  - Vacuum Robot
  - Robotic Lawn Mower
- Medical
  - Infusion Pump
  - Electronic Hospital Bed & Bed Control
  - Multiparameter Patient Monitor
  - Blood Pressure Monitor
  - CPAP Machine
  - Telehealth Systems
  - Ultrasound Scanner
  - Ultrasound Smart Probe
  - Electric Toothbrush
- Retail Automation and Payment
- Printers

## Contents

General Description .....	1
Key Features .....	1
Applications.....	2
Contents .....	3
List of Tables.....	4
List of Figures .....	4
References.....	6
1. System Overview .....	7
1.1. Block Diagram .....	7
2. Pinout Functions .....	10
2.1. Pin Diagram.....	10
2.2. Pinout Description .....	11
3. Characteristics.....	13
3.1. Electrical Characteristics .....	13
3.1.1. Absolute Maximum Ratings .....	13
3.1.2. ESD Ratings .....	13
3.1.3. Recommended Operating Conditions.....	13
3.1.4. I/O DC Characteristics .....	13
3.1.5. Power Consumption .....	13
3.1.6. Fast Clock Characteristics.....	14
3.1.7. Slow Clock Characteristics.....	14
3.1.8. Power Supply Sequencing.....	15
3.1.9. SDIO Timing Characteristics.....	15
3.1.10. SPI Timing Characteristics .....	17
3.1.11. UART 4-Wire Interface .....	17
3.2. RF Characteristics.....	18
3.2.1. WLAN Performance: 2.4-GHz Receiver Characteristics.....	18
3.2.2. WLAN Performance: 2.4-GHz Transmitter Characteristics.....	18
3.2.3. BLE Performance: Receiver Characteristics.....	18
3.2.4. BLE Performance: Transmitter Characteristics.....	19
4. Mechanical Specifications.....	19
4.1. Module Dimensions .....	19
4.2. PCB Footprints .....	21
4.3. U.FL Connector Specification .....	21
5. Integration Guideline .....	22
5.1. System Diagram .....	22
5.2. Module Placement.....	22
5.3. Reference Design .....	24
5.4. Other Design Considerations .....	24
6. Handling Instructions.....	24
6.1. Module Marking .....	24
6.2. Packaging Information .....	25
6.2.1. Tape and Reel Package Information.....	25
6.2.2. Carton Information and Labeling.....	27
6.3. Assembly Instruction .....	27
6.3.1. Moisture Sensitive Level .....	27
6.3.2. Reflow Profile.....	27
6.3.3. Other Consideration .....	28

7.	Certification .....	28
7.1.	Bluetooth Qualification .....	28
7.1.1.	Bluetooth Qualification Information .....	28
7.1.2.	Bluetooth Qualification Process .....	28
7.2.	Regulatory Compliance .....	29
7.2.1.	Certified Antennas .....	29
7.2.2.	FCC Compliance .....	30
7.2.3.	IC/ISED Compliance .....	31
8.	Ordering Information .....	32
9.	Revision History .....	33
	Important Notice and Disclaimer .....	34
	Contact .....	34

## List of Tables

Table 1.	Module Variants .....	1
Table 2.	Pinout Description .....	11
Table 3.	Absolute Maximum Ratings .....	13
Table 4.	ESD Ratings .....	13
Table 5.	Recommended Operating Conditions .....	13
Table 6.	I/O DC Characteristics .....	13
Table 7.	Current Consumption – WLAN Static Modes .....	13
Table 8.	Current Consumption – WLAN Use Cases .....	14
Table 9.	Current Consumption – BLE Static Modes .....	14
Table 10.	Current Consumption – Device States .....	14
Table 11.	40-MHz Crystal Oscillator (HFXT) Characteristics .....	14
Table 12.	External 32.768-KHz Crystal Oscillator (LFXT) Requirements .....	14
Table 13.	SDIO Timing Parameters - Default Speed .....	16
Table 14.	SDIO Timing Parameters - High Speed .....	16
Table 15.	SPI Timing Parameters .....	17
Table 16.	UART Timing Parameters .....	17
Table 17.	WLAN Performance: 2.4-GHz Receiver Characteristics .....	18
Table 18.	WLAN Performance: 2.4-GHz Transmitter Power .....	18
Table 19.	BLE Performance: 2.4-GHz Receiver Characteristics .....	18
Table 20.	BLE Performance: Transmitter Characteristics .....	19
Table 21.	Other Design Considerations .....	24
Table 22.	Reflow Profile Parameters <sup>(1)</sup> <sup>(3)</sup> .....	28
Table 23.	Bluetooth Qualification Information .....	28
Table 24.	Certification Information .....	29
Table 25.	Certified Antenna List .....	29
Table 26.	Ordering Information .....	32
Table 27.	Ordering Information .....	33

## List of Figures

Figure 1.	The block diagram of BDE-BW3301NP1 and BDE-BW3300NP1 .....	7
Figure 2.	The block diagram of BDE-BW3301UP1 and BDE-BW3300UP1 .....	8
Figure 3.	The block diagram of BDE-BW3301AP1 and BDE-BW3300AP1 .....	8
Figure 4.	The block diagram of BDE-BW3301NP2 and BDE-BW3300NP2 .....	9

Figure 5. The block diagram of BDE-BW3301UP2 and BDE-BW3300UP2 .....	9
Figure 6. The block diagram of CC3301 (Adopted form CC3301 Datasheet) .....	10
Figure 7. Pin Diagram of BDE-BW330XNP1 and BDE-BW330XNP2 (Top View) .....	10
Figure 8. Pin Diagram of BDE-BW330XAP1, BDE-BW330XUP1 and BDE-BW330XUP2 (Top View).....	11
Figure 9. SDIO Default Input Timing.....	15
Figure 10. SDIO Default Output Timing.....	15
Figure 11. SDIO High Speed Input Timing .....	16
Figure 12. SDIO High Speed Output Timing .....	16
Figure 13. SDIO Default Input Timing.....	17
Figure 14. SDIO Default Output Timing.....	17
Figure 15. Mechanical Drawing of BDE-BW330XNP1 and BDE-BW330XNP2.....	20
Figure 16. Mechanical Drawing of BDE-BW330XAP1, BDE-BW330XUP1 and BDE-BW330XUP2 .....	20
Figure 17. Recommended Footprint Drawings.....	21
Figure 18. U.FL Connector Drawing and Specification .....	22
Figure 19. High-Level System Block Diagram .....	22
Figure 20. Recommended Module Placement .....	23
Figure 21. Module Marking.....	25
Figure 22. Carrier Tape Drawing for BDE-BW330XNPX variants.....	25
Figure 23. Carrier Tape Drawing for BDE-BW330XUPX and BDE-BW330XAP1 variants .....	26
Figure 24. 13-inch Reel Drawing.....	26
Figure 25. Thermal Profile Schematic .....	27

## References

1. CC3300 resources: <https://www.ti.com/product/CC3300>;
2. CC3301 resources: <https://www.ti.com/product/CC3301>;

# 1. System Overview

## 1.1. Block Diagram

BDE-BW330XXPX module series is based on the TI’s 10<sup>th</sup> generation connectivity combo chip CC3301/CC3300. The module series, as seen in below diagrams, depending on different configurations, comprises of:

- 40-MHz XTAL
- Bandpass filter
- Decoupling capacitors
- RF switch (Antenna diversity variants)
- U.FL connector (U.FL variants)
- PCB trace antenna (BDE-BW3301AP1)

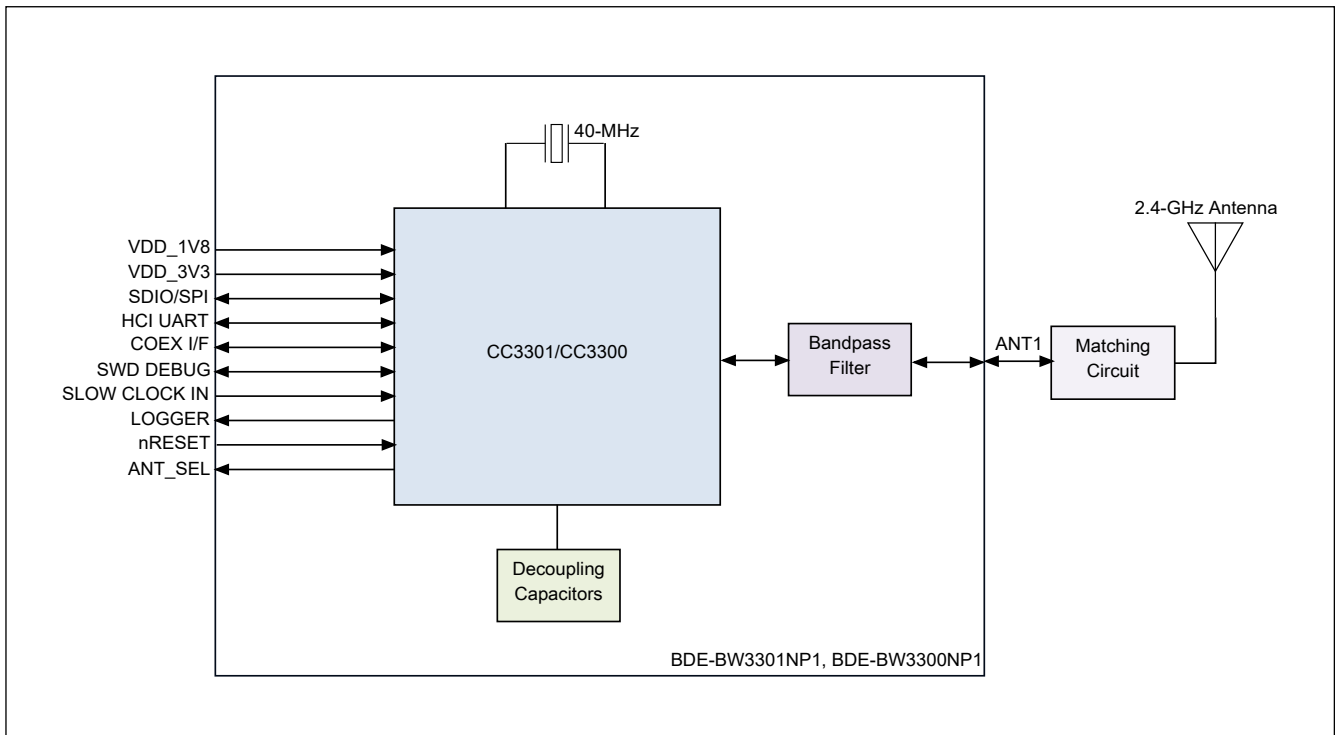


Figure 1. The block diagram of BDE-BW3301NP1 and BDE-BW3300NP1

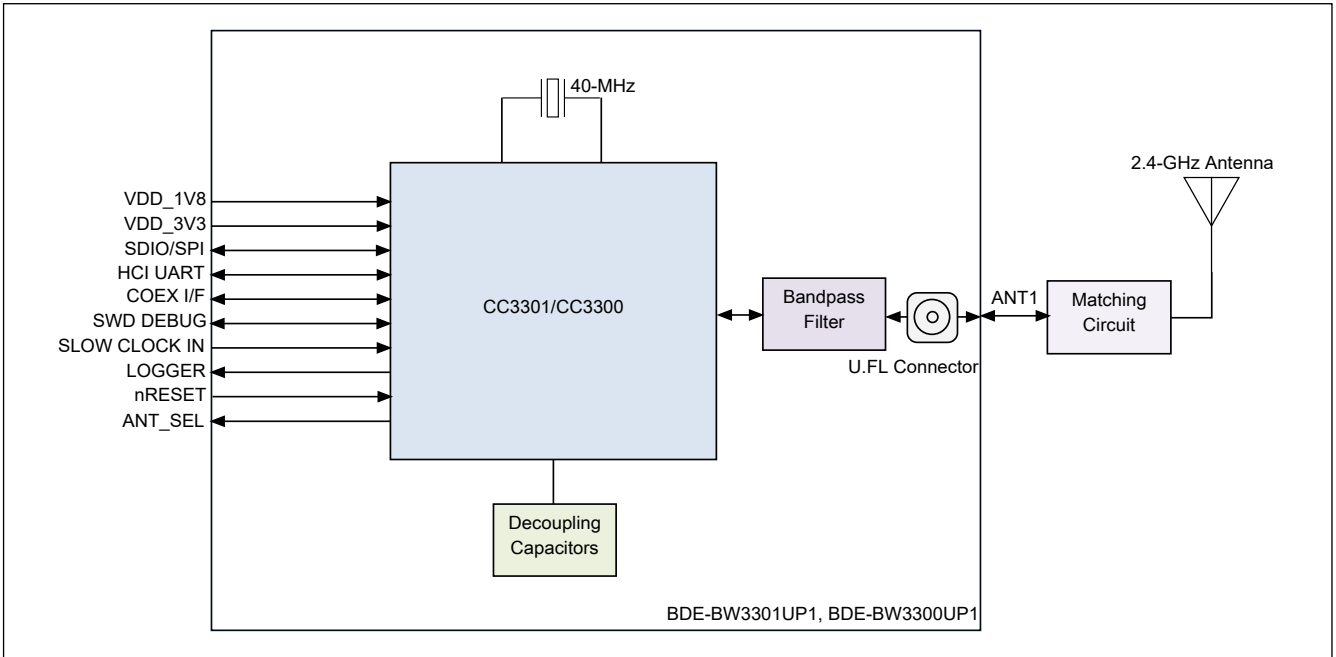


Figure 2. The block diagram of BDE-BW3301UP1 and BDE-BW3300UP1

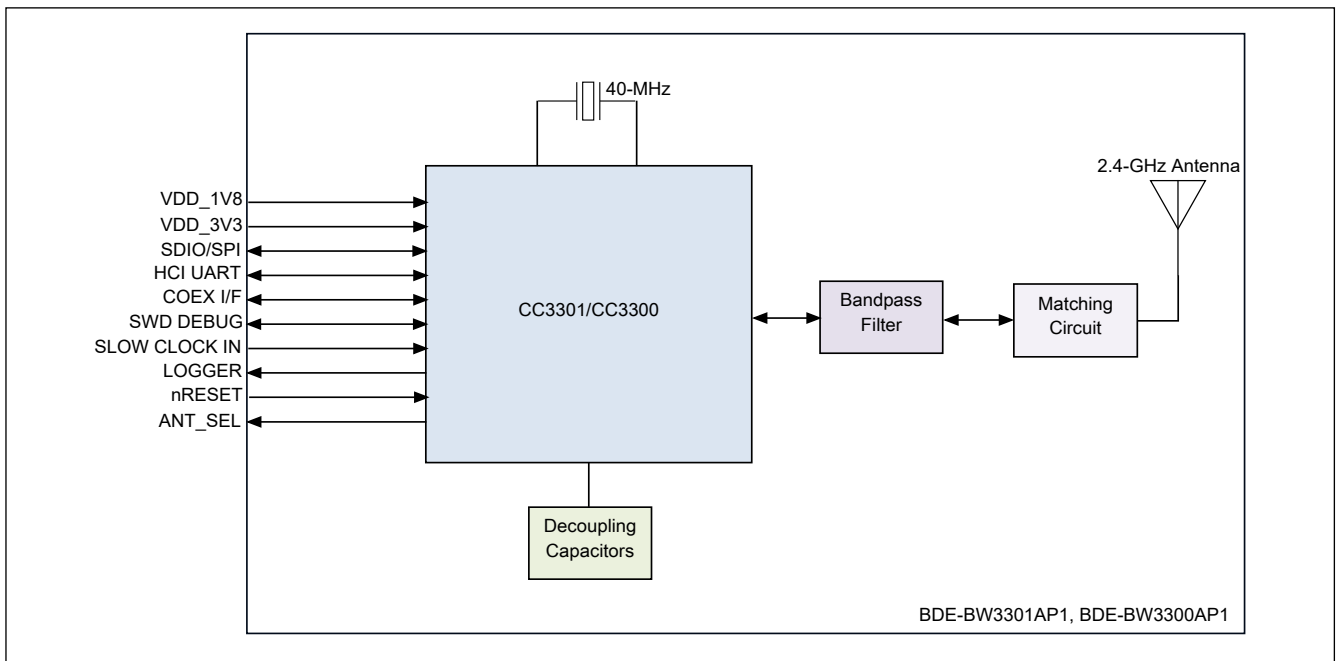
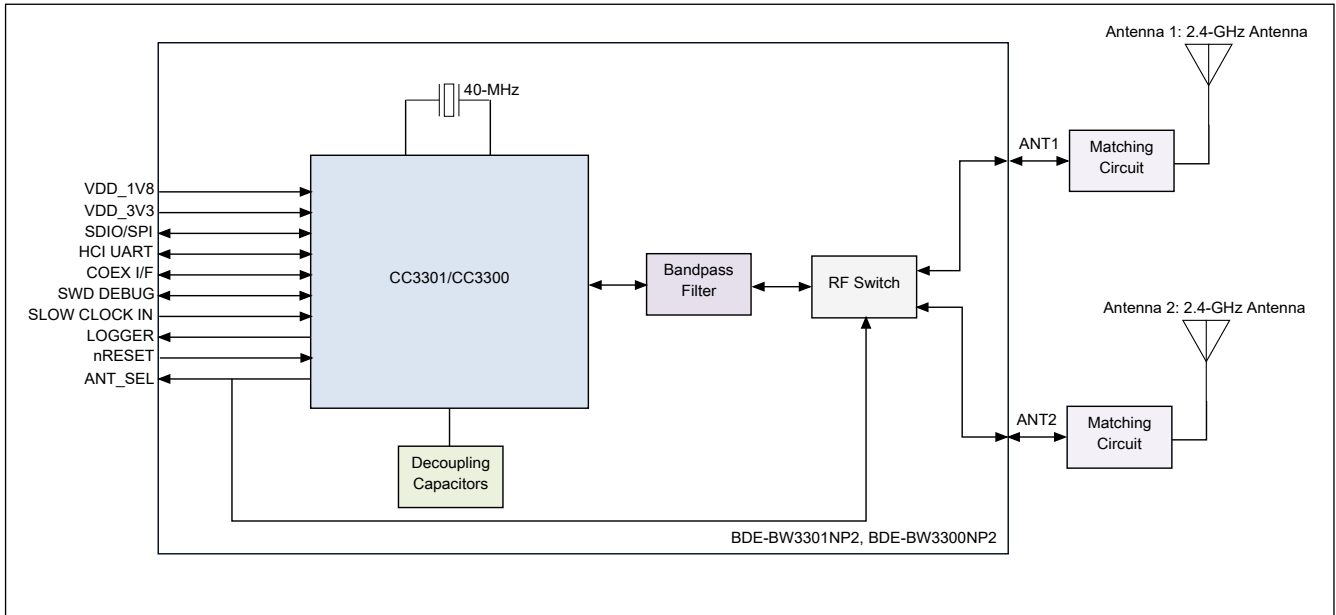
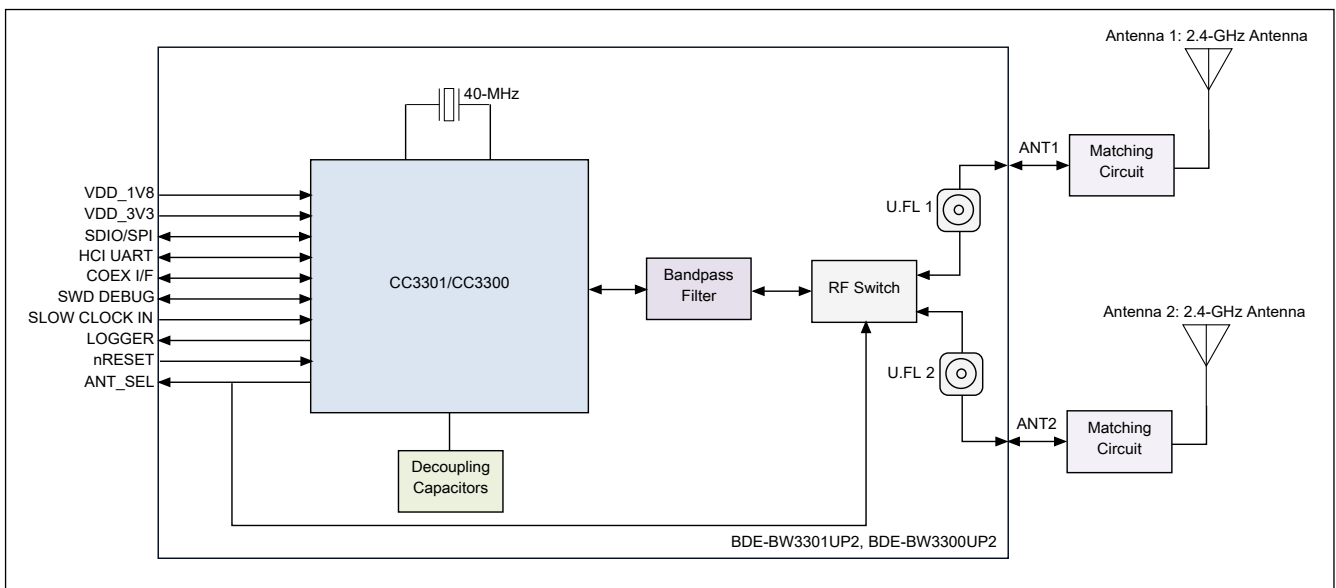


Figure 3. The block diagram of BDE-BW3301AP1 and BDE-BW3300AP1



**Figure 4. The block diagram of BDE-BW3301NP2 and BDE-BW3300NP2**



**Figure 5. The block diagram of BDE-BW3301UP2 and BDE-BW3300UP2**

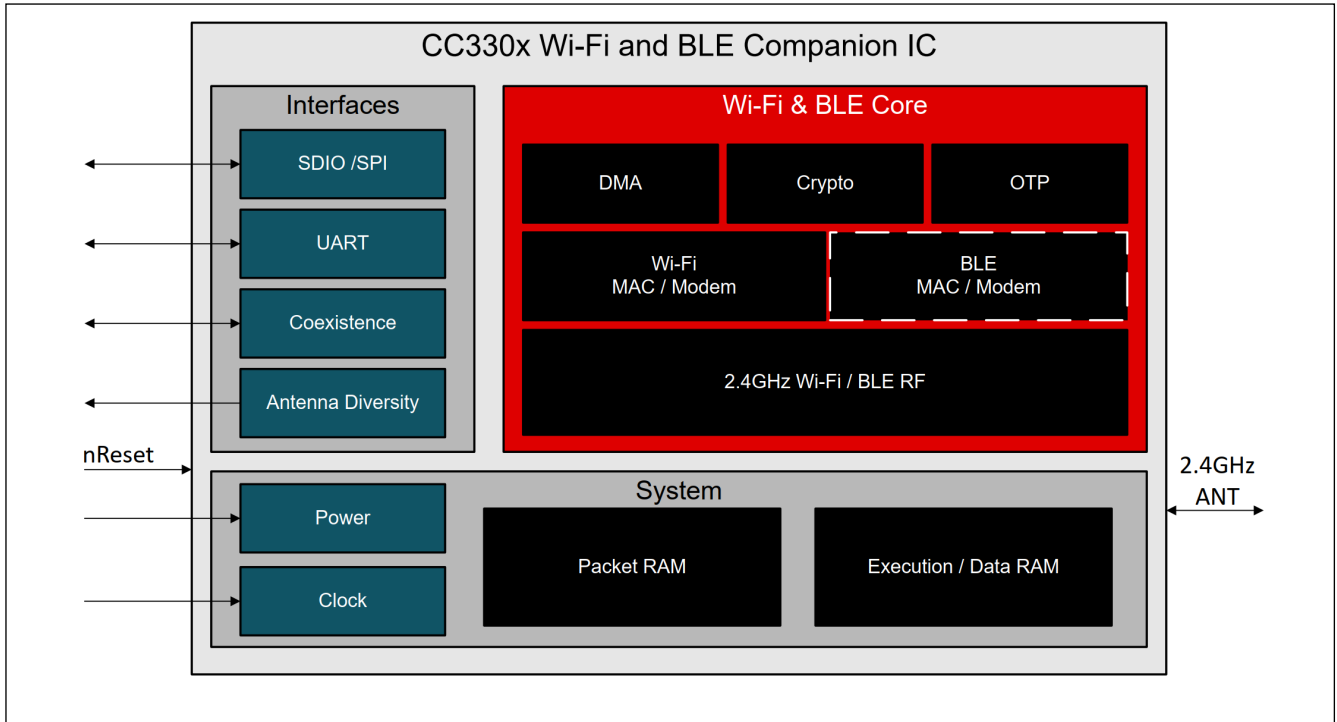


Figure 6. The block diagram of CC3301 (Adopted form CC3301 Datasheet)

## 2. Pinout Functions

### 2.1. Pin Diagram

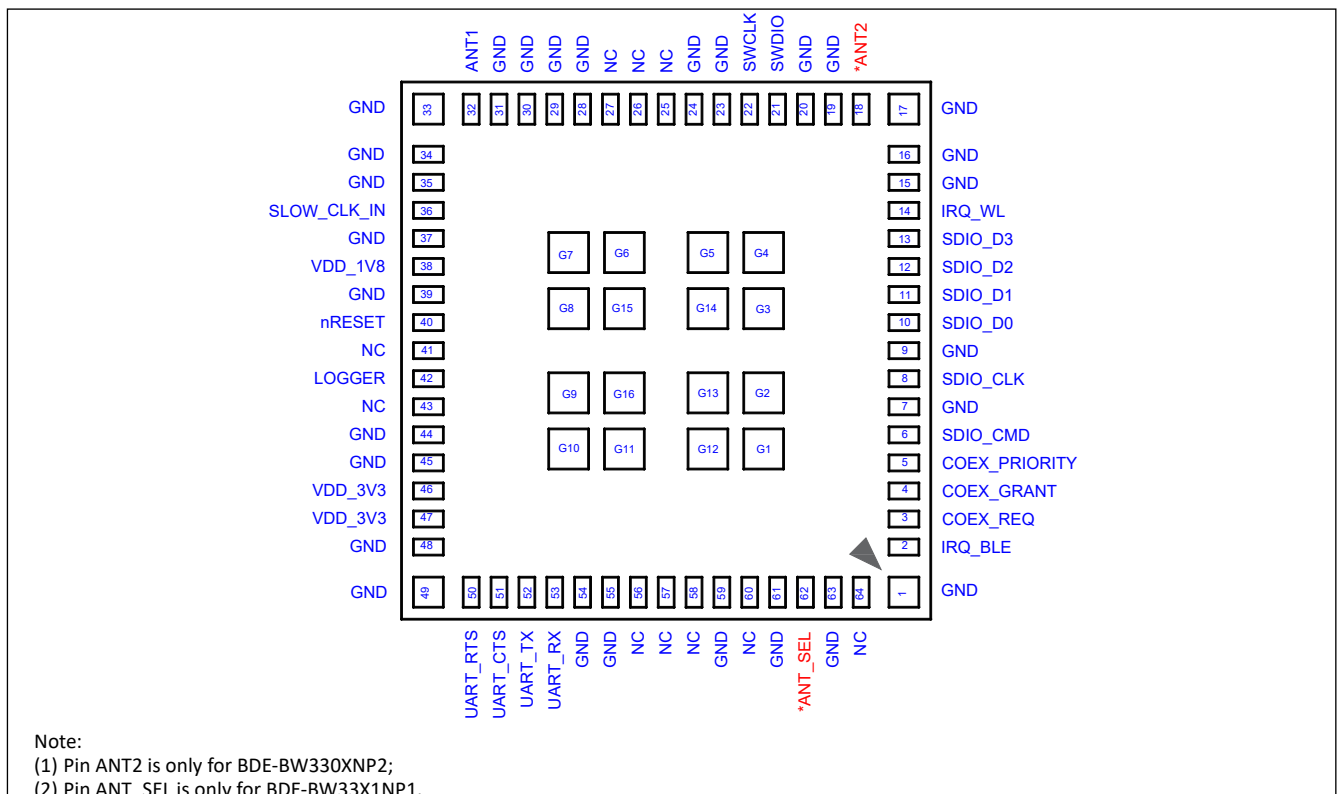


Figure 7. Pin Diagram of BDE-BW330XNP1 and BDE-BW330XNP2 (Top View)

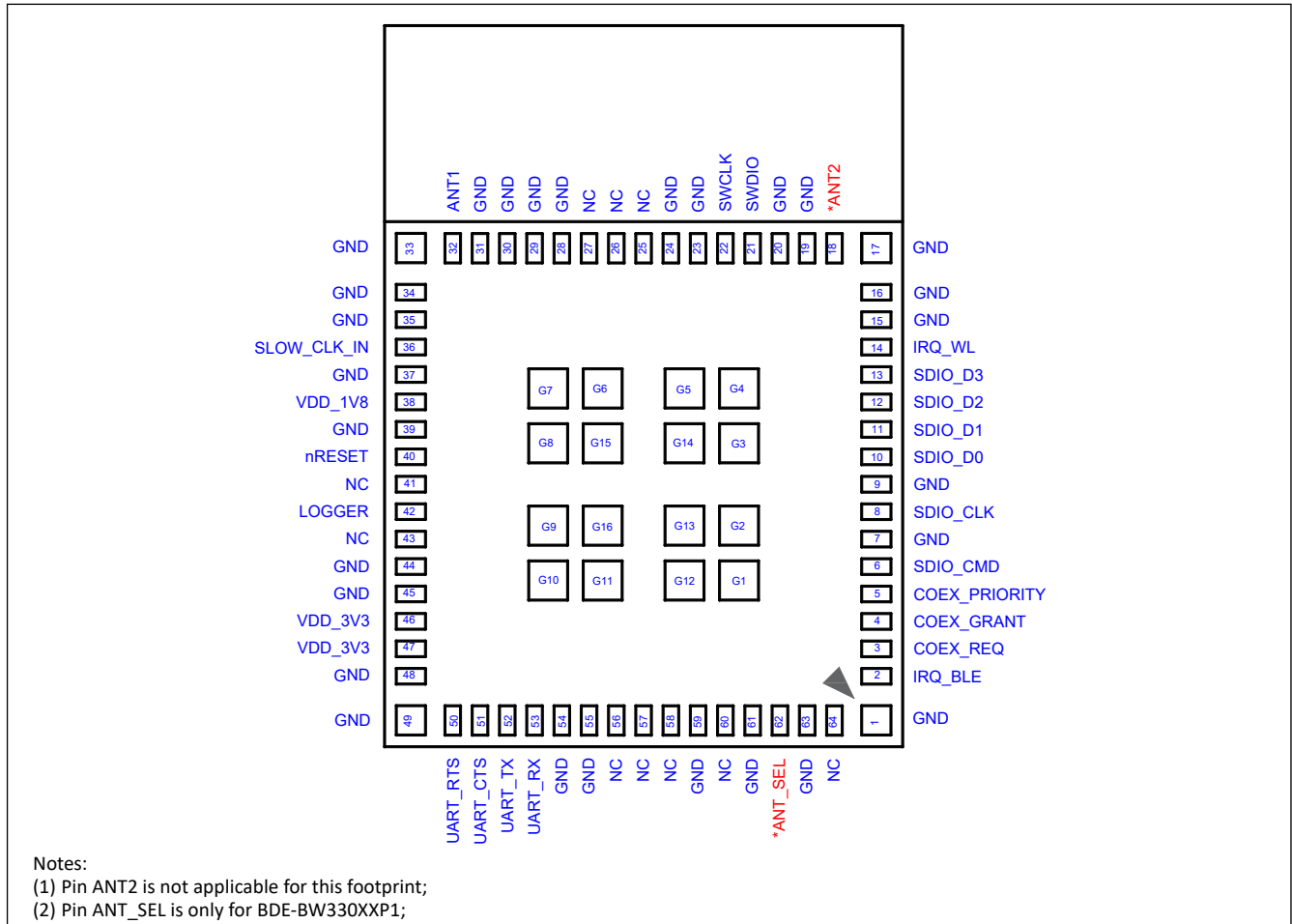


Figure 8. Pin Diagram of BDE-BW330XAP1, BDE-BW330XUP1 and BDE-BW330XUP2 (Top View)

## 2.2. Pinout Description

Table 2. Pinout Description

Module Pin #	Pin Name	Type	Voltage Level	Shutdown State <sup>(1)</sup>	State After Power-up <sup>(1)</sup>	Description
1	GND	Ground	-	-	-	Power ground
2	IRQ_BLE <sup>(2)</sup>	O	VDD_1V8	PD	PD	Interrupt request to host for BLE (in shared SDIO mode)
3	COEX_REQ	I	VDD_1V8	PU	PU	External coexistence interface – request
4	COEX_GRANT	O	VDD_1V8	PD	PD	External coexistence interface – grant
5	COEX_PRIORITY	I	VDD_1V8	PU	PU	External coexistence interface – priority
6	SDIO_CMD	I/O	VDD_1V8	Hi-Z	Hi-Z	SDIO command or SPI PICO
7	GND	Ground	-	-	-	Power ground
8	SDIO_CLK	I	VDD_1V8	Hi-Z	Hi-Z	SDIO clock or SPI clock
9	GND	Ground	-	-	-	Power ground
10	SDIO_D0	I/O	VDD_1V8	Hi-Z	Hi-Z	SDIO data D0 or SPI POCI
11	SDIO_D1	I/O	VDD_1V8	Hi-Z	Hi-Z	SDIO data D1
12	SDIO_D2	I/O	VDD_1V8	Hi-Z	Hi-Z	SDIO data D2
13	SDIO_D3	I/O	VDD_1V8	Hi-Z	PU	SDIO data D3 or SPI CS
14	IRQ_WL <sup>(2)</sup>	O	VDD_1V8	PD	PD	Interrupt request to host for WLAN
15	GND	Ground	-	-	-	Power ground
16	GND	Ground	-	-	-	Power ground
17	GND	Ground	-	-	-	Power ground
18	ANT2	RF	-	-	-	Secondary antenna for antenna diversity, only for BDE-BW330XNP2
	NC	-	-	-	-	No connect for other variants except for BDE-BW330XNP2
19	GND	Ground	-	-	-	Power ground

Module Pin #	Pin Name	Type	Voltage Level	Shutdown State <sup>(1)</sup>	State After Power-up <sup>(1)</sup>	Description
20	GND	Ground	-	-	-	Power ground
21	SWDIO	I/O	VDD_1V8	PU	PU	Serial wire debug I/O
22	SWCLK	I	VDD_1V8	PD	PD	Serial wire debug clock
23	GND	Ground	-	-	-	Power ground
24	GND	Ground	-	-	-	Power ground
25	NC	-	-	-	-	No connect
26	NC	-	-	-	-	No connect
27	NC	-	-	-	-	No connect
28	GND	Ground	-	-	-	Power ground
29	GND	Ground	-	-	-	Power ground
30	GND	Ground	-	-	-	Power ground
31	GND	Ground	-	-	-	Power ground
32	ANT1	RF	-	-	-	Bluetooth Low Energy and WLAN 2.4-GHz antenna port
33	GND	Ground	-	-	-	Power ground
34	GND	Ground	-	-	-	Power ground
35	GND	Ground	-	-	-	Power ground
36	SLOW_CLK_IN	I	VDD_1V8	PD	PD	32.768-KHz RTC clock input
37	GND	Ground	-	-	-	Power ground
38	VDD_1V8	Power	-	-	-	1.8V power supply for SRAM, digital, analog, I/O, and programming
39	GND	Ground	-	-	-	Power ground
40	nRESET	I	VDD_1V8	PU	PU	Reset line for enabling or disabling device (active low)
41	NC	-	-	-	-	No connect
42	LOGGER <sup>(2)</sup>	O	VDD_1V8	PU	PU	Tracer (UART TX debug logger)
43	NC	-	-	-	-	No connect
44	GND	Ground	-	-	-	Power ground
45	GND	Ground	-	-	-	Power ground
46	VDD_3V3	Power	-	-	-	3.3V power supply for PA
47						
48	GND	Ground	-	-	-	Power ground
49	GND	Ground	-	-	-	Power ground
50	UART_RTS	O	VDD_1V8	PU	PU	UART RTS signal - flow control for BLE HCI
51	UART_CTS	I	VDD_1V8	PU	PU	UART CTS signal - flow control for BLE HCI
52	UART_TX	O	VDD_1V8	PU	PU	UART TX for BLE HCI
53	UART_RX	I	VDD_1V8	PU	PU	UART RX for BLE HCI
54	GND	Ground	-	-	-	Power ground
55	GND	Ground	-	-	-	Power ground
56	NC	-	-	-	-	No connect
57	NC	-	-	-	-	No connect
58	NC	-	-	-	-	No connect
59	GND	Ground	-	-	-	Power ground
60	NC	-	-	-	-	No connect
61	GND	Ground	-	-	-	Power ground
62	ANT_SEL	O	VDD_1V8	PD	PD	Antenna select control line for antenna diversity, only for BDE-BW330XNP1, BDE-BDE-BW330XUP1, BDE-BW330XAP1
	NC	-	-	-	-	No connect for BDE-BW330XNP2, BDE-BW330XUP2
63	GND	Ground	-	-	-	Power ground
64	NC	-	-	-	-	No connect
G1 – G16	GND	Ground	-	-	-	Power ground, thermal pads

**Note:**

(1) All digital I/O's (with the exception of SDIO signals) are Hi-Z when the device is in shutdown mode with internal PU/PD according to the "shutdown state" column. PU means pull-up, PD means pull-down, Hi-Z means high impedance;

(2) LOGGER, IRQ\_BLE and IRQ\_WL pins are sensed by the device during boot. They should be kept "100" state on power-up with LOGGER pin being high.

## 3. Characteristics

### 3.1. Electrical Characteristics

#### 3.1.1. Absolute Maximum Ratings

Stresses beyond those listed under Absolute Maximum Ratings may cause permanent damage to the device. These are stress ratings only, so functional operation of the device at these or any other conditions beyond those indicated in the operational sections of the specification are not implied. Exposure to Absolute Maximum Rating conditions for extended periods may affect device reliability.

**Table 3. Absolute Maximum Ratings**

Parameter	MIN	MAX	Unit
VDD_3V3	-0.5	4.2	V
VDD_1V8	-0.5	2.1	V
Operating ambient temperature	-40	85	°C
Storage temperature	-40	85	°C

#### 3.1.2. ESD Ratings

**Table 4. ESD Ratings**

Parameter	Description	Value	Unit	Note
Electrostatic discharge	Contact discharge	4000	V	As per EN 301-489
	Air discharge	8000	V	As per EN 301-489

#### 3.1.3. Recommended Operating Conditions

**Table 5. Recommended Operating Conditions**

Parameter	MIN	TYP	MAX	Unit
VDD_3V3	3	3.3	3.6	V
VDD_1V8	1.62	1.8	1.98	V
Operating ambient temperature	-40		85	°C

#### 3.1.4. I/O DC Characteristics

**Table 6. I/O DC Characteristics**

Parameter	Description	Test Condition	MIN	TYP	MAX	Unit
V <sub>IH</sub>	High level input voltage		0.65 x VDD_1V8		VDD_1V8	V
V <sub>IL</sub>	Low level input voltage		0		0.35 x VDD_1V8	V
V <sub>OH</sub>	High level output voltage	At 4mA	VDD_1V8 – 0.45		VDD_1V8	V
V <sub>OL</sub>	Low level output voltage	At 4mA	0		0.45	V

#### 3.1.5. Power Consumption

The measurement is made with the evaluation module (EM board) BDE-BW33PN-EM at room temperature, unless otherwise noted.

**Table 7. Current Consumption – WLAN Static Modes**

Parameter	Test Condition		Supply	TYP	MAX	Unit
Continuous TX <sup>(1)</sup>	1 DSSS	TX power = 20 dBm	VDD_1V8	92		mA
			VDD_3V3	250	290	
	6 OFDM	TX power = 20 dBm	VDD_1V8	105	170	
			VDD_3V3	250	290	
	54 OFDM	TX power = 17 dBm	VDD_1V8	110		
			VDD_3V3	180		
	HT MCS0	TX power = 20 dBm	VDD_1V8	105		

Parameter	Test Condition		Supply	TYP	MAX	Unit
			VDD_3V3	VDD_1V8	VDD_3V3	
	HT MCS7	TX power = 17 dBm	VDD_3V3	245		
			VDD_1V8	110		
			VDD_3V3	180		
	HE MCS0	TX power = 20 dBm	VDD_1V8	105		
			VDD_3V3	240		
	HE MCS7	TX power = 20 dBm	VDD_1V8	110		
VDD_3V3			180			
Continuous RX			VDD_1V8	62		
			VDD_3V3	0		

Note:

(1) Peak current VDD\_3V3 can hit 340mA during device calibration; Peak current VDD\_1V8 of 185mA including peripherals and internal cortex.

**Table 8. Current Consumption – WLAN Use Cases**

Mode	Description	TYP	Unit
DTM = 1	System with 3.3V to Ext. DC/DC at 85% efficiency WLAN beacon reception every DTIM=1 (~102ms)	637	µA
	System with 1.8V WLAN beacon reception every DTIM=1 (~102ms)	980	
DTM = 3	System with 3.3V to Ext. DC/DC at 85% efficiency WLAN beacon reception every DTIM=1 (~102ms)	371	
	System with 1.8V WLAN beacon reception every DTIM=1 (~102ms)	570	
DTM = 5	System with 3.3V to Ext. DC/DC at 85% efficiency WLAN beacon reception every DTIM=1 (~102ms)	319	
	System with 1.8V WLAN beacon reception every DTIM=1 (~102ms)	490	

**Table 9. Current Consumption – BLE Static Modes**

Parameter	Test Condition		Supply	TYP	Unit
			VDD_1V8	VDD_3V3	
TX, max duty cycle	1 DSSS	TX power = 0 dBm	VDD_1V8	102	mA
			VDD_3V3	35	
	6 OFDM	TX power = 10 dBm	VDD_1V8	102	
			VDD_3V3	100	
	54 OFDM	TX power = 20 dBm	VDD_1V8	105	
			VDD_3V3	250	
RX			VDD_1V8	62	
			VDD_3V3	0	

**Table 10. Current Consumption – Device States**

Mode	Description	Supply	TYP	Unit
Shutdown	External supplies are available, device held in reset (nRESET is low)	VDD_1V8	10	µA
		VDD_3V3	2	
Sleep	Low power mode – RAM in retention	VDD_1V8	330	
		VDD_3V3	2	

### 3.1.6. Fast Clock Characteristics

The fast clock running at 40-MHz for WLAN/BLE functions is included in the module. The specification is shown in below table.

**Table 11. 40-MHz Crystal Oscillator (HFXT) Characteristics**

Parameter	Test Condition	MIN	TYP	MAX	Unit
Crystal frequency			40		MHz
ESR, Equivalent series resistance				20	Ω
Frequency tolerance	T <sub>A</sub> : 25°C	-10		+10	ppm
Frequency stability	T <sub>A</sub> : -40°C ~ 85°C	-30		+30	ppm
C <sub>L</sub> , Crystal load capacitance			8		pF

### 3.1.7. Slow Clock Characteristics

The slow clock running at 32.768-KHz for low power modes is not included in the module. The slow clock can be generated internally or externally. The external slow clock requirements are listed in below table.

**Table 12. External 32.768-KHz Crystal Oscillator (LFXT) Requirements**

Parameter	Description	MIN	TYP	MAX	Unit
Crystal frequency	Square wave		32768		Hz

Parameter	Description	MIN	TYP	MAX	Unit
Frequency accuracy	Initial + temperature + aging	-250		+250	ppm
Input duty cycle		30	50	70	%
Rise and fall time	10% to 90% (rise) and 90% to 10% (fall) of digital signal level			100	ns
Input low level		0		$0.35 \times V_{DD\_1V8}$	V
Input low level		$0.65 \times V_{DD\_1V8}$		1.95	V
Input impedance		1			MΩ
Input capacitors				5	pF

### 3.1.8. Power Supply Sequencing

For proper operation of the module, perform the recommended power-up sequencing as follows:

1. VDD\_3V3 and VDD\_1V8 must be available before nRESET is released;
2. For an external slow clock, ensure that the clock is stable before nRESET is deasserted (high);
3. The nRESET pin should be held low for at least 10 us after stabilization of the external power supplies.

### 3.1.9. SDIO Timing Characteristics

SDIO is the main host interfaces for WLAN, and it supports a maximum clock rate of 52-MHz. The module also supports shared SDIO interface for both BLE and WLAN.

The timing diagram for default speed and high speed SDIO are as follows:

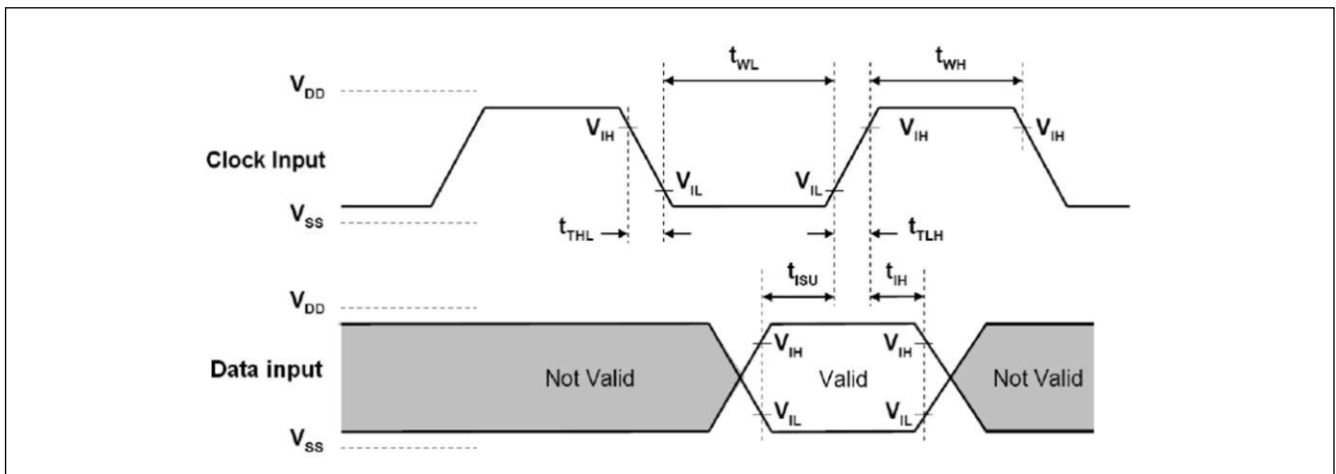


Figure 9. SDIO Default Input Timing

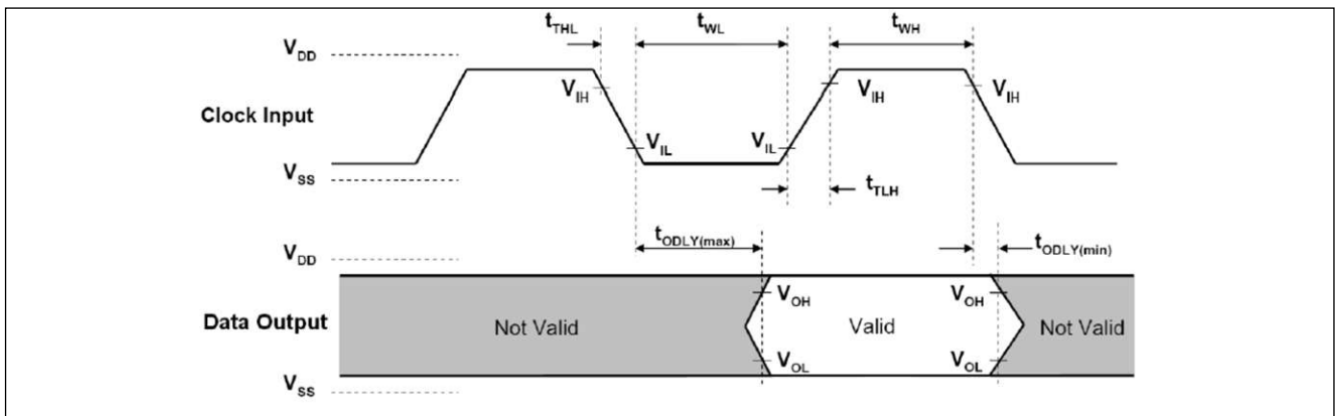


Figure 10. SDIO Default Output Timing

Table 13. SDIO Timing Parameters - Default Speed

Parameter	Description	MIN	MAX	Unit
$f_{clock}$	Clock frequency, CLK		26	MHz
$t_{High}$	High period	10		ns
$t_{Low}$	Low period	10		
$t_{TLH}$	Rise time, CLK		10	
$t_{THL}$	Fall time, CLK		10	
$t_{ISU}$	Setup time, input valid before CLK ↑	5		
$t_{IH}$	Hold time, input valid after CLK ↑	5		
$t_{ODLY}$	Delay time, CLK ↓ to output valid	2	14	pF
$C_L$	Capacitive load on outputs	15	40	

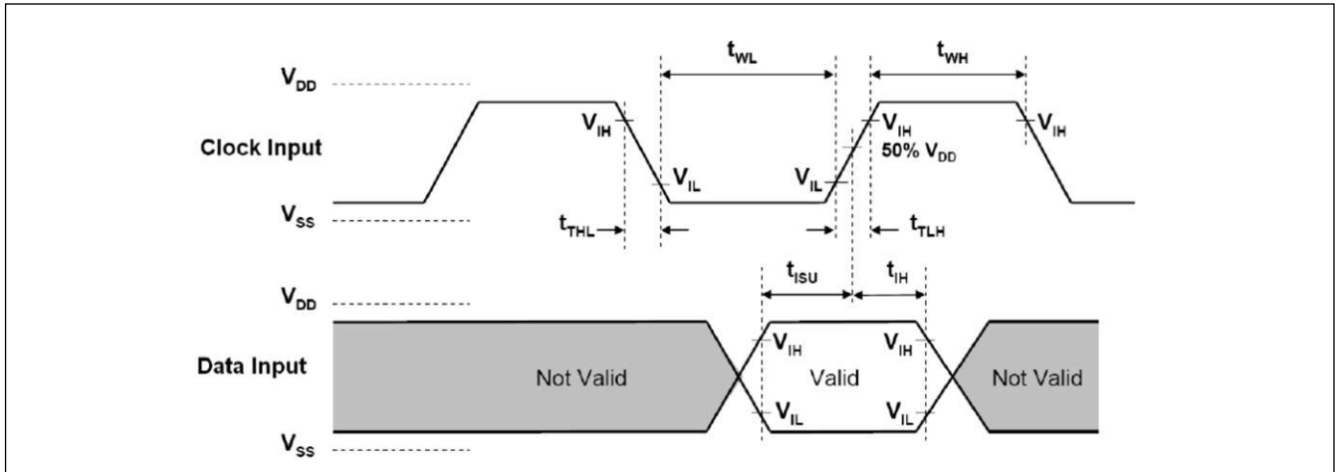


Figure 11. SDIO High Speed Input Timing

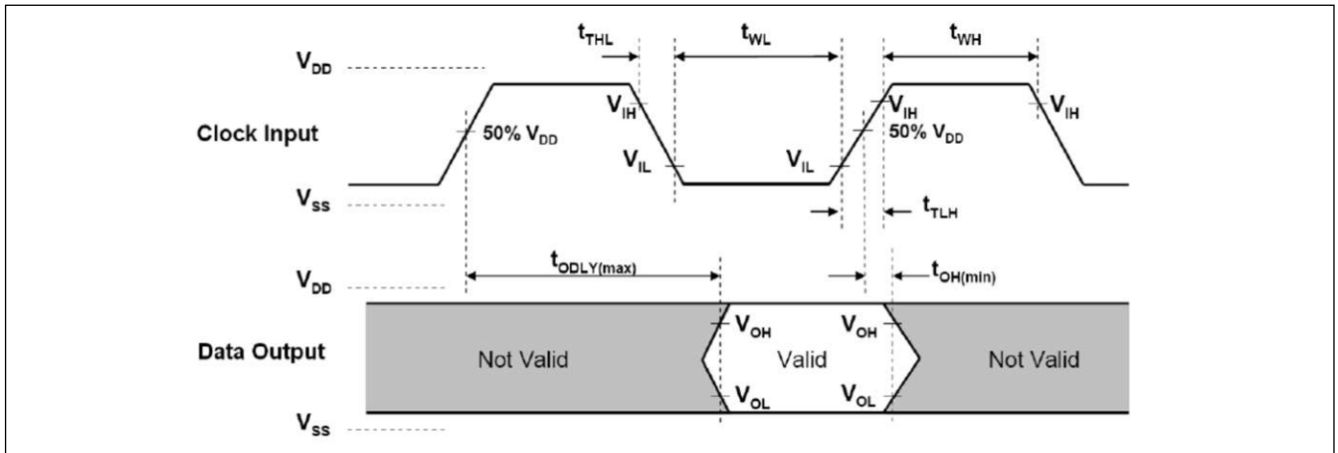


Figure 12. SDIO High Speed Output Timing

Table 14. SDIO Timing Parameters - High Speed

Parameter	Description	MIN	MAX	Unit
$f_{clock}$	Clock frequency, CLK		52	MHz
$t_{High}$	High period	7		ns
$t_{Low}$	Low period	7		
$t_{TLH}$	Rise time, CLK		3	
$t_{THL}$	Fall time, CLK		3	
$t_{ISU}$	Setup time, input valid before CLK ↑	6		
$t_{IH}$	Hold time, input valid after CLK ↑	2		
$t_{ODLY}$	Delay time, CLK ↓ to output valid	2	14	pF
$C_L$	Capacitive load on outputs	15	40	

### 3.1.10. SPI Timing Characteristics

SPI is another host interface for WLAN. The module also supports shared SPI interface for both BLE and WLAN.

The timing diagram for SIP is as follows:

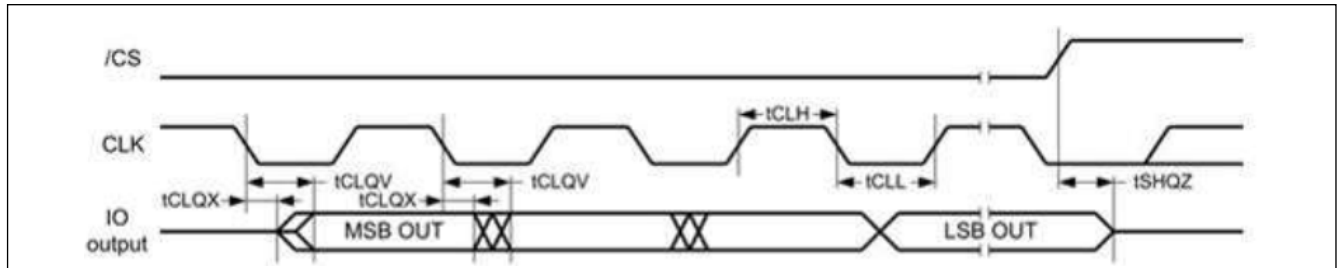


Figure 13. SDIO Default Input Timing

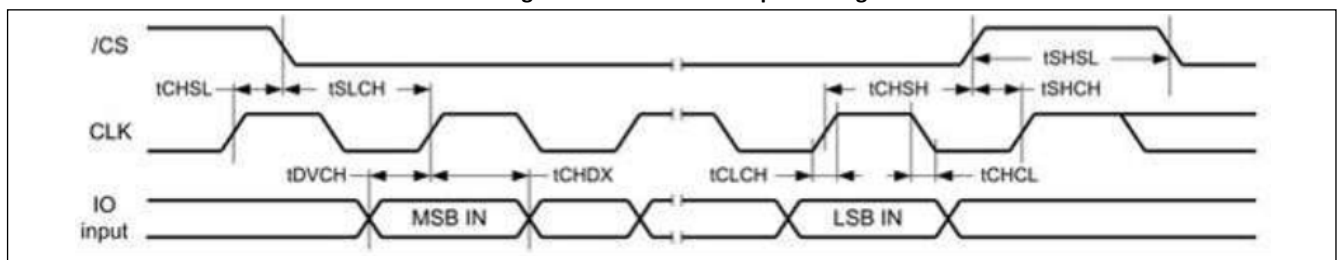


Figure 14. SDIO Default Output Timing

Table 15. SPI Timing Parameters

Parameter	Description	MIN	MAX	Unit
$f_{clock}$	Clock frequency, CLK		26	MHz
$t_{High}$	High period	10		ns
$t_{Low}$	Low period	10		
$t_{TLH}$	Rise time, CLK		3	
$t_{THL}$	Fall time, CLK		3	
$t_{CSU}$	CS setup time, CS valid before CLK $\uparrow$	3		
$t_{ISU}$	PICO, input valid before CLK $\uparrow$	3		
$t_{IH}$	PICO Hold time, input valid after CLK $\uparrow$	3		
$t_{Dr}, t_{Df}$ - Active	Delay time, CLK $\uparrow/\downarrow$ to output valid	2	10	
$t_{Dr}, t_{Df}$ - Sleep	Delay time, CLK $\uparrow/\downarrow$ to output valid		12	
$C_L$	Capacitive load on outputs	15	40	pF

### 3.1.11. UART 4-Wire Interface

UART is the main host interface for BLE, which supports host controller interface (HCI) transport layer.

Table 16. UART Timing Parameters

Parameter	Description	MIN	TYP	MAX	Unit
Baud rate	Clock frequency, CLK	37.5		4364	kbps
Baud rate accuracy per byte	Receive/Transmit	-2.5		+1.5	%
Baud rate accuracy per bit	Receive/Transmit	-12.5		+12.5	%
CTS low to TX_DATA on		0	2		ms
CTS high to TX_DATA off	Hardware flow control			1	Byte
CTS high pulse width		1			bit
RTS low to RX_DATA on		0	2		ms
RTS high to RX_DATA off	Interrupt set to 1/4 FIFO			16	Byte

### 3.2. RF Characteristics

#### 3.2.1. WLAN Performance: 2.4-GHz Receiver Characteristics

**Table 17. WLAN Performance: 2.4-GHz Receiver Characteristics**

Parameter	Test Condition	MIN	TYP	MAX	Unit
Operational frequency range		2412		2472	MHz
Sensitivity: 8% PER for 11b rates, 10% PER for 11g/n/ax rates	1 DSSS		-98		dBm
	2 DSSS		-95		
	11 DSSS		-90		
	6 OFDM		-93		
	54 OFDM		-75		
	HT MCS0 MM 4K		-93		
	HT MCS7 MM 4K		-72		
	HE MCS0 4K		-92		
Maximum input level: 8% PER for 11b rates, 10% PER for 11g/n/ax rates	1 DSSS		0		dBm
	6 OFDM, HT MCS0, HE MCS0		0		
	54 OFDM, HT MCS7, HE MCS7		-9		
Adjacent channel rejection	1 DSSS		45		dB
	2 DSSS		39		
	11 DSSS		20		
	6 OFDM		3		
	54 OFDM		20		
	HT MCS0 MM 4K		3		
	HT MCS7 MM 4K		16		
	HE MCS0 4K		-1		
RSSI accuracy	-90 dBm to -30 dBm	-3		3	dB

#### 3.2.2. WLAN Performance: 2.4-GHz Transmitter Characteristics

**Table 18. WLAN Performance: 2.4-GHz Transmitter Power**

Parameter	Test Condition	MIN	TYP	MAX	Unit
Operational frequency range		2412		2472	MHz
Maximum output power at VDD_3V3 = 3.3 V	1 DSSS		20.5		dBm
	6 OFDM		-20.2		
	54 OFDM		17.4		
	HT MCS0 MM 4K		20.2		
	HT MCS7 MM 4K		17.4		
	HE MCS0 4K		20.2		
	HE MCS7 4K		17.3		

#### 3.2.3. BLE Performance: Receiver Characteristics

**Table 19. BLE Performance: 2.4-GHz Receiver Characteristics**

Parameter	Test Condition	MIN	TYP	MAX	Unit
<b>BLE 125Kbps (LE Coded) Receiver Characteristics</b>					
Receiver sensitivity	PER <30.8%		-102		dBm
Receiver saturation	PER <30.8%		0		
Co-channel rejection <sup>(1)</sup>	Wanted signal at -79 dBm, modulated interferer in channel		10		dB
Selectivity, ±1 MHz <sup>(1)</sup>	Wanted signal at -79 dBm, modulated interferer at ±1 MHz		0 / 0 <sup>(2)</sup>		
Selectivity, ±2 MHz <sup>(1)</sup>	Wanted signal at -79 dBm, modulated interferer at ±2 MHz		-37 / -30 <sup>(2)</sup>		
Selectivity, ±3 MHz <sup>(1)</sup>	Wanted signal at -79 dBm, modulated interferer at ±3 MHz		-39 / -36 <sup>(2)</sup>		
Selectivity, ±4 MHz <sup>(1)</sup>	Wanted signal at -79 dBm, modulated interferer at ±4MHz		-45 / -41 <sup>(2)</sup>		
RSSI accuracy	-90 dBm to -20 dBm	-4		4	
<b>BLE 500Kbps (LE Coded) Receiver Characteristics</b>					
Receiver sensitivity	PER <30.8%		-99		dBm
Receiver saturation	PER <30.8%		0		
Co-channel rejection <sup>(1)</sup>	Wanted signal at -72 dBm, modulated interferer in channel		10		dB
Selectivity, ±1 MHz <sup>(1)</sup>	Wanted signal at -72 dBm, modulated interferer at ±1 MHz		0 / 0 <sup>(2)</sup>		
Selectivity, ±2 MHz <sup>(1)</sup>	Wanted signal at -72 dBm, modulated interferer at ±2 MHz		-35 / -25 <sup>(2)</sup>		
Selectivity, ±3 MHz <sup>(1)</sup>	Wanted signal at -72 dBm, modulated interferer at ±3 MHz		-40 / -37 <sup>(2)</sup>		
Selectivity, ±4 MHz <sup>(1)</sup>	Wanted signal at -72 dBm, modulated interferer at ±4MHz		-45 / -40 <sup>(2)</sup>		
RSSI accuracy	-90 dBm to -20 dBm	-4		4	
<b>BLE 1Mbps (LE 1M) Receiver Characteristics</b>					
Receiver sensitivity	PER <30.8%, 37-byte packets		-99		dBm
Receiver sensitivity	PER <30.8%, 255-byte packets		-98		

Parameter	Test Condition	MIN	TYP	MAX	Unit
Receiver saturation	PER <30.8%		0		
Co-channel rejection <sup>(1)</sup>	Wanted signal at -67 dBm, modulated interferer in channel		10		dB
Selectivity, ±1 MHz <sup>(1)</sup>	Wanted signal at -67 dBm, modulated interferer at ±1 MHz		0 / 0 <sup>(2)</sup>		
Selectivity, ±2 MHz <sup>(1)</sup>	Wanted signal at -67 dBm, modulated interferer at ±2 MHz		-35 / -28 <sup>(2)</sup>		
Selectivity, ±3 MHz <sup>(1)</sup>	Wanted signal at -67 dBm, modulated interferer at ±3 MHz		-38 / -32 <sup>(2)</sup>		
Selectivity, ±4 MHz <sup>(1)</sup>	Wanted signal at -67 dBm, modulated interferer at ±4MHz		-45 / -40 <sup>(2)</sup>		
Out-of-band blocking	30 MHz to 2000 MHz, wanted signal at -67 dBm		-23		dBm
Out-of-band blocking	2003 MHz to 2399 MHz, wanted signal at -67 dBm		-30		
Out-of-band blocking	2484 MHz to 2997 MHz, wanted signal at -67 dBm		-30		
Out-of-band blocking	3000 MHz to 6 GHz, wanted signal at -67 dBm		-21		
Intermodulation	Wanted signal at 2402 MHz, -64 dBm, two interferers at 2405 and 2408 MHz respectively, at the given power level		-40		
RSSI accuracy	-90 dBm to -20 dBm	-4		4	dB
<b>BLE 2Mbps (LE 2M) Receiver Characteristics</b>					
Receiver sensitivity	PER <30.8%, 37-byte packets		-95		dBm
Receiver saturation	PER <30.8%		0		
Co-channel rejection <sup>(1)</sup>	Wanted signal at -67 dBm, modulated interferer in channel		10		dB
Selectivity, ±2 MHz <sup>(1)</sup>	Wanted signal at -67 dBm, modulated interferer at ±1 MHz		0 / 0 <sup>(2)</sup>		
Selectivity, ±4 MHz <sup>(1)</sup>	Wanted signal at -67 dBm, modulated interferer at ±2 MHz		-35 / -28 <sup>(2)</sup>		
Selectivity, ±6 MHz <sup>(1)</sup>	Wanted signal at -67 dBm, modulated interferer at ±3 MHz		-35 / -28 <sup>(2)</sup>		
Alternate channel rejection, ±8 MHz <sup>(1)</sup>	Wanted signal at -67 dBm, modulated interferer at ±8MHz		-37 / -32 <sup>(2)</sup>		
Out-of-band blocking	30 MHz to 2000 MHz, wanted signal at -67 dBm		-23		dBm
Out-of-band blocking	2003 MHz to 2399 MHz, wanted signal at -67 dBm		-30		
Out-of-band blocking	2484 MHz to 2997 MHz, wanted signal at -67 dBm		-30		
Out-of-band blocking	3000 MHz to 6 GHz, wanted signal at -67 dBm		-21		
Intermodulation	Wanted signal at 2402 MHz, -64 dBm, two interferers at 2405 and 2408 MHz respectively, at the given power level		-44		
RSSI accuracy	-90 dBm to -20 dBm	-4		4	dB

Note:

- (1) Numbers given as C/I dB;
- (2) X / Y, where X is +N MHz and Y is -N M;

### 3.2.4. BLE Performance: Transmitter Characteristics

Table 20. BLE Performance: Transmitter Characteristics

Parameter	Description	MIN	TYP	MAX	Unit
Maximum output power	Highest setting		20		dBm

## 4. Mechanical Specifications

### 4.1. Module Dimensions

The module dimensions are shown in following figures:

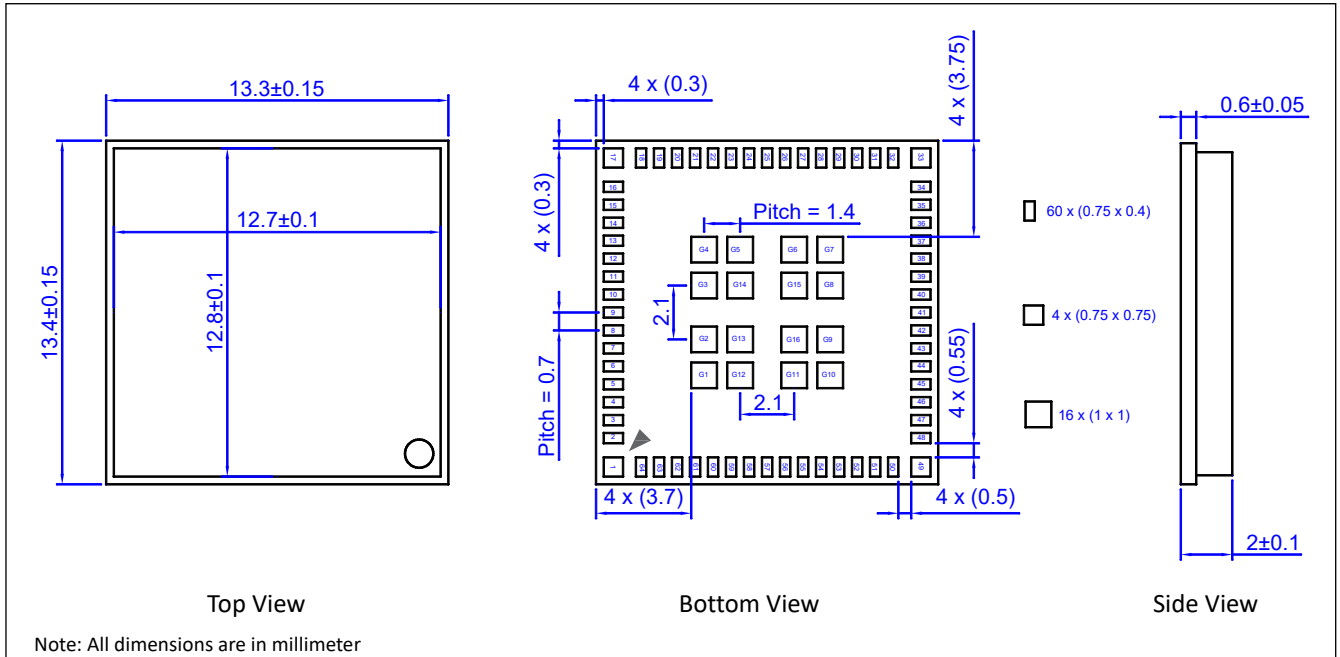


Figure 15. Mechanical Drawing of BDE-BW330XNP1 and BDE-BW330XNP2

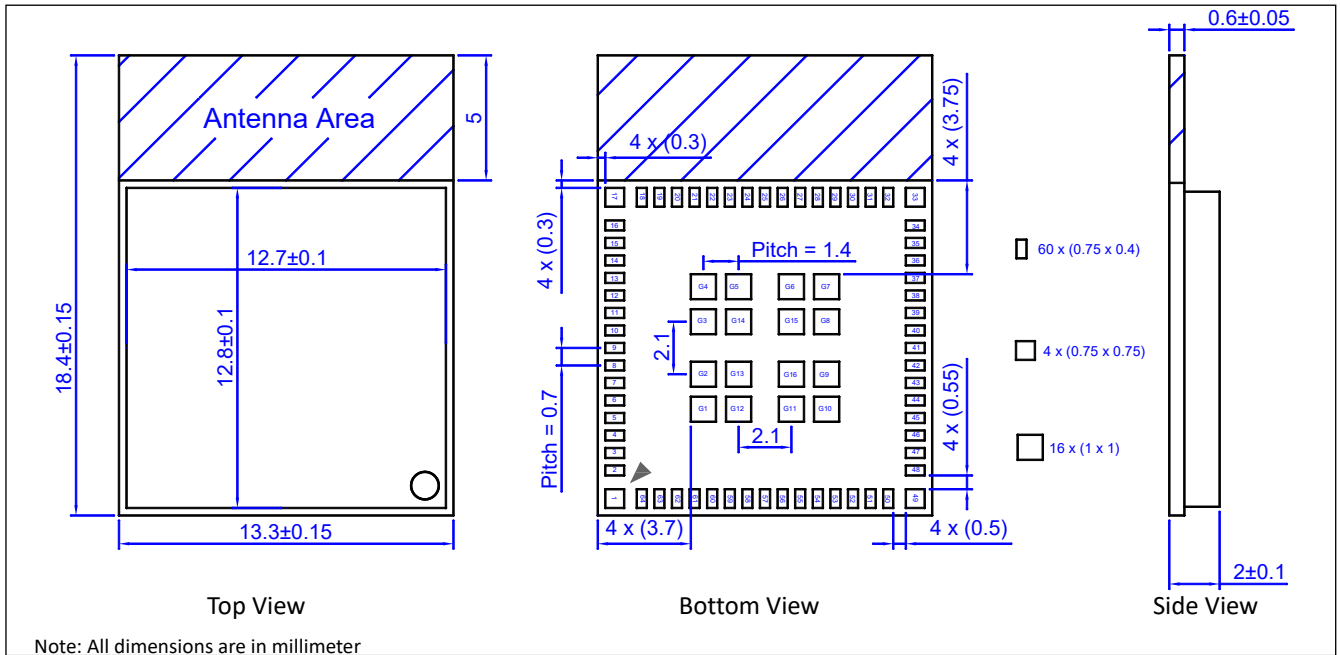


Figure 16. Mechanical Drawing of BDE-BW330XAP1, BDE-BW330XUP1 and BDE-BW330XUP2

### 4.2. PCB Footprints

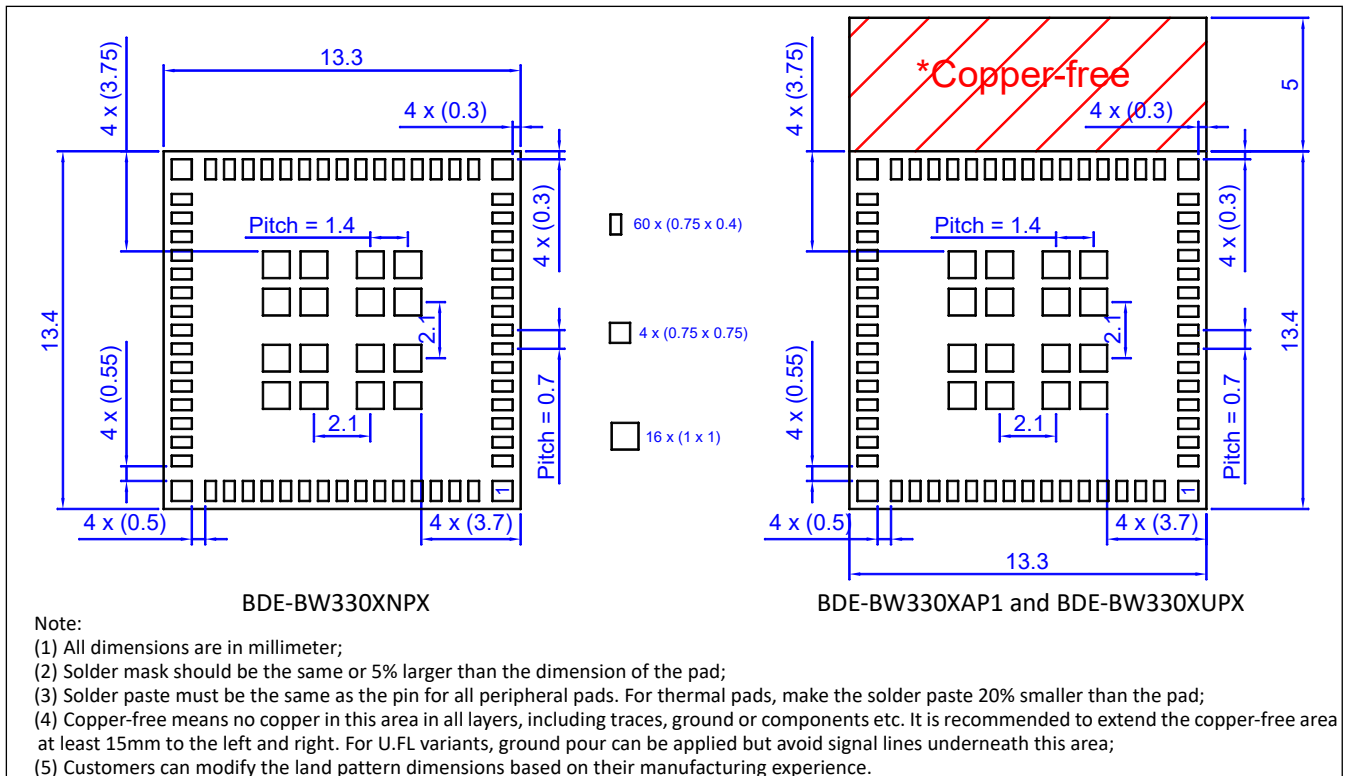
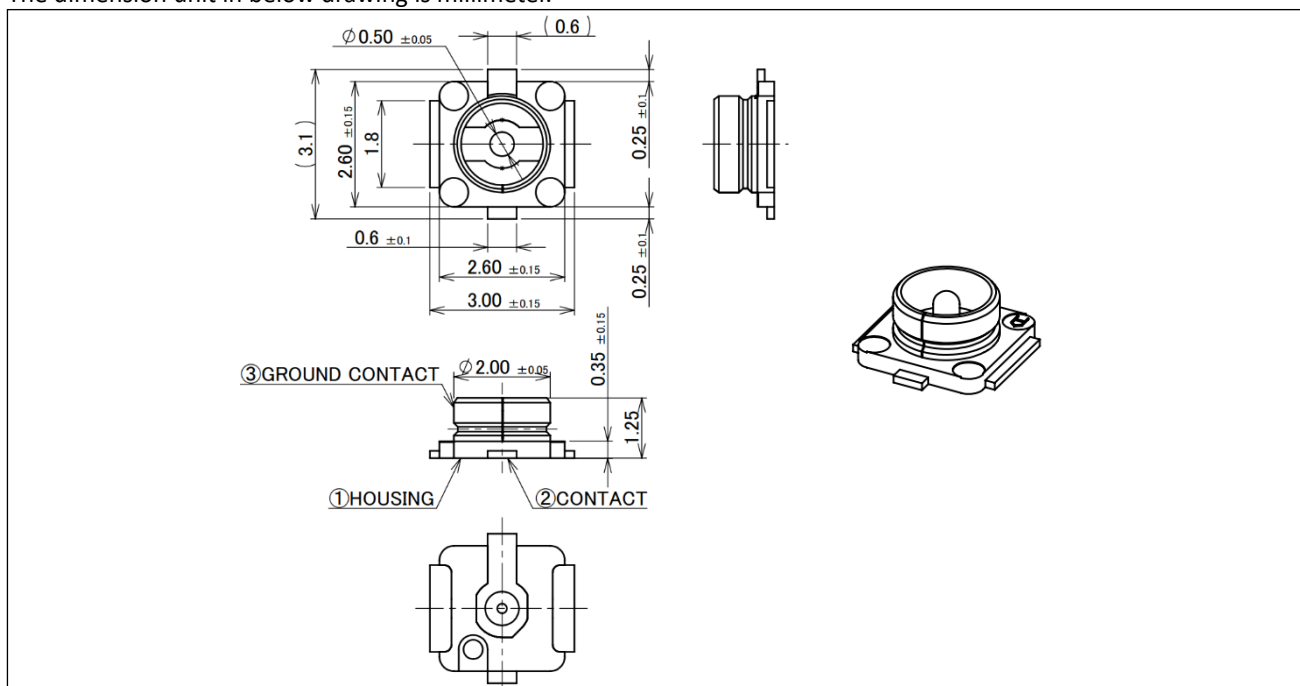


Figure 17. Recommended Footprint Drawings

### 4.3. U.FL Connector Specification

The drawing and specification of the U.FL connector utilized in the module is as below for reference.

The dimension unit in below drawing is millimeter.



RATING VOLTAGE	60 V AC (R.M.S)	
RATING FREQUENCY	DC~9GHz	
OPERATING TEMPERATURE	233~363K (-40°C~+90°C)	
VSWR	RECEPTACLE: 1.3 MAX. AT 0.1~3 GHz, 1.4 MAX. AT 3~6 GHz, 1.8 MAX. AT 6~9 GHz	
MAIN CONTACT RESISTANCE	INITIAL: 20 mohm MAX. / AFTER TEST: $\angle$ R 20 mohm MAX.	
GROUND CONTACT RESISTANCE	INITIAL: 20 mohm MAX. / AFTER TEST: $\angle$ R 100 mohm MAX.	
INSULATION RESISTANCE	INITIAL: 500 Mohm MIN. / AFTER TEST: 100 Mohm MIN.	
DIELECTRIC WITHSTANDING VOLTAGE	200 V AC, 1 MINUTE	
DURABILITY	30 CYCLES	
UNMATING FORCE (INITIAL / AFTER TEST)	INITIAL: 5 N MIN. AFTER TEST: 3 N MIN.	INITIAL: 4 N MIN. AFTER TEST: 2 N MIN.

Figure 18. U.FL Connector Drawing and Specification

## 5. Integration Guideline

### 5.1. System Diagram

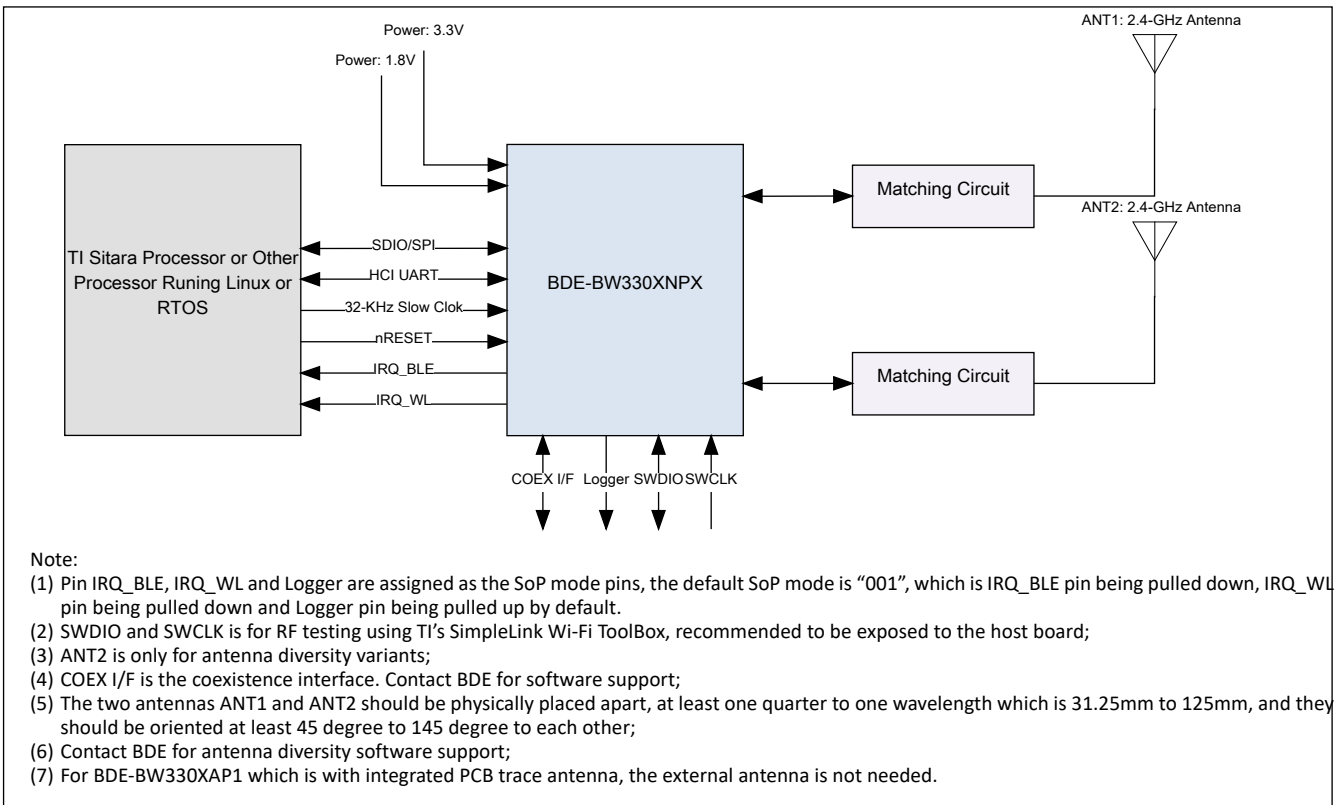


Figure 19. High-Level System Block Diagram

### 5.2. Module Placement

The placement of the module in the base board is critical in your design. Improper placement can lead to poor antenna performance. BDE recommend following below practical placement to achieve acceptable antenna performance.

Any form of proximity to the metal or other material will change/degrade the antenna performance. Keep the antenna area as far as possible to the metal material in any direction. If metal materials can not be avoided in your design for example the design with metal enclosure, we recommended keep the antenna area at least 40mm distance to the enclosure in all directions. Customers should verify the communication range with the mock-up or real product prototype on their own.

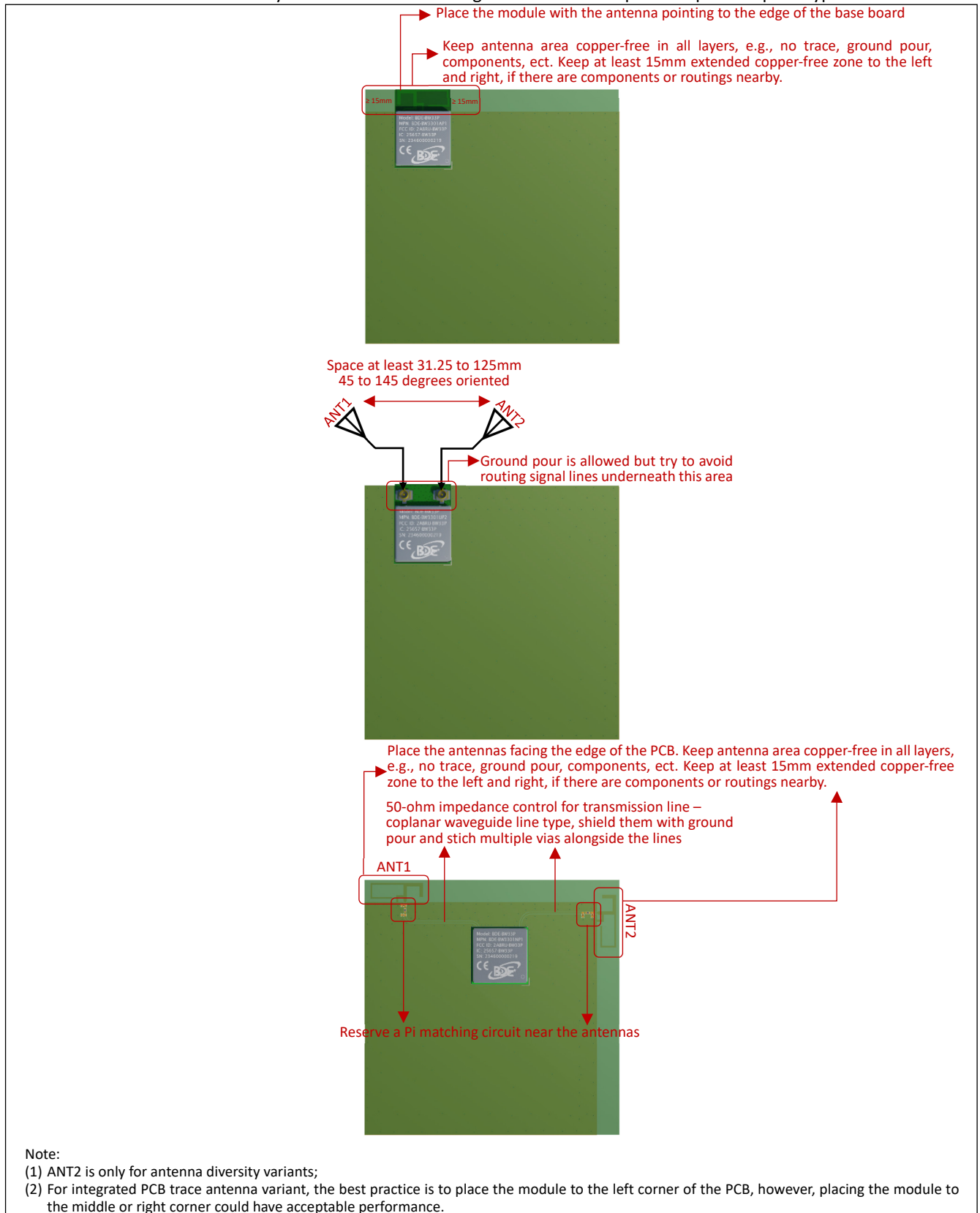


Figure 20. Recommended Module Placement

### 5.3. Reference Design

For reference schematic and layout, please refer to the design files of BDE-33PN-EM and BDE-33PA-EM.

### 5.4. Other Design Considerations

**Table 21. Other Design Considerations**

<b>Thermal</b>	
1	The proximity of ground vias must be close to each ground pad of the module.
2	Signal traces must not be run underneath the module on the layer where the module is mounted.
3	Have a complete ground pour in layer 2 for thermal dissipation.
4	Have a solid ground plane and ground vias under the module for stable system and thermal dissipation.
5	Increase the ground pour in the first layer and have all of the traces from the first layer on the inner layers, if possible.
6	Signal traces can be run on a third layer under the solid ground layer, which is below the module mounting layer.
<b>RF Trace and Antenna Routing</b>	
7	The RF trace antenna feed must be as short as possible beyond the ground reference. At this point, the trace starts to radiate.
8	The RF trace bends must be gradual with an approximate maximum bend of 45° with trace mitered. RF traces must not have sharp corners.
9	RF traces must have via stitching on the ground plane beside the RF trace on both sides.
10	RF traces must have constant impedance (50-ohm Coplanar or microstrip transmission line).
11	For best results, the RF trace ground layer must be the ground layer immediately below the RF trace. The ground layer must be solid.
12	There must be no traces or ground under the antenna section.
13	RF traces must be as short as possible. The antenna, RF traces, and modules must be on the edge of the PCB product. The proximity of the antenna to the enclosure and the enclosure material must also be considered.
14	BDE recommends using double-shielded coaxial RF cable to connect with the U.FL connector with antenna if the U.FL variants are selected.
15	Do not place or run the RF cable right above or below the module.
16	If there are some other radio besides this module in the system, try to place them apart as far as possible. And ensure there is at least 25 dB isolation between the antenna port of every radio.
<b>Supply and Interface</b>	
17	The power trace for VDD_3V3 must be at least 40-mil wide.
18	The VDD_1V8 trace must be at least 18-mil wide.
19	Make VDD_3V3 and VDD_1V8 traces as wide as possible to ensure reduced inductance and trace resistance.
20	If possible, shield 3V3 and 1V8 traces with ground above, below, and beside the traces.
21	SDIO signals traces (CLK, CMD, D0, O1, O2, and O3) must be routed in parallel to each other and as short as possible (less than 12 cm). In addition, every trace length must be the same as the others. There should be enough space between traces-greater than 1.5 times the trace width or ground-to ensure signal quality, especially for the SDIO_CLK trace. Remember to keep these traces away from the other digital or analog signal traces. It is recommends adding ground shielding around these buses.
22	SDIO and digital clock signals are a source of noise. Keep the traces of these signals as short as possible. If possible, maintain a clearance around them.

## 6. Handling Instructions

The module is the surface mount module with LGA footprint. It is designed to conform to the major manufacturing guidelines, including the commercial, industrial manufacturing process.

In this section, we will cover the basic shipping information, including the module markings, packaging, labeling, ect. And also the instructions on how to handle the module in terms of storage, assembly and so on.

### 6.1. Module Marking

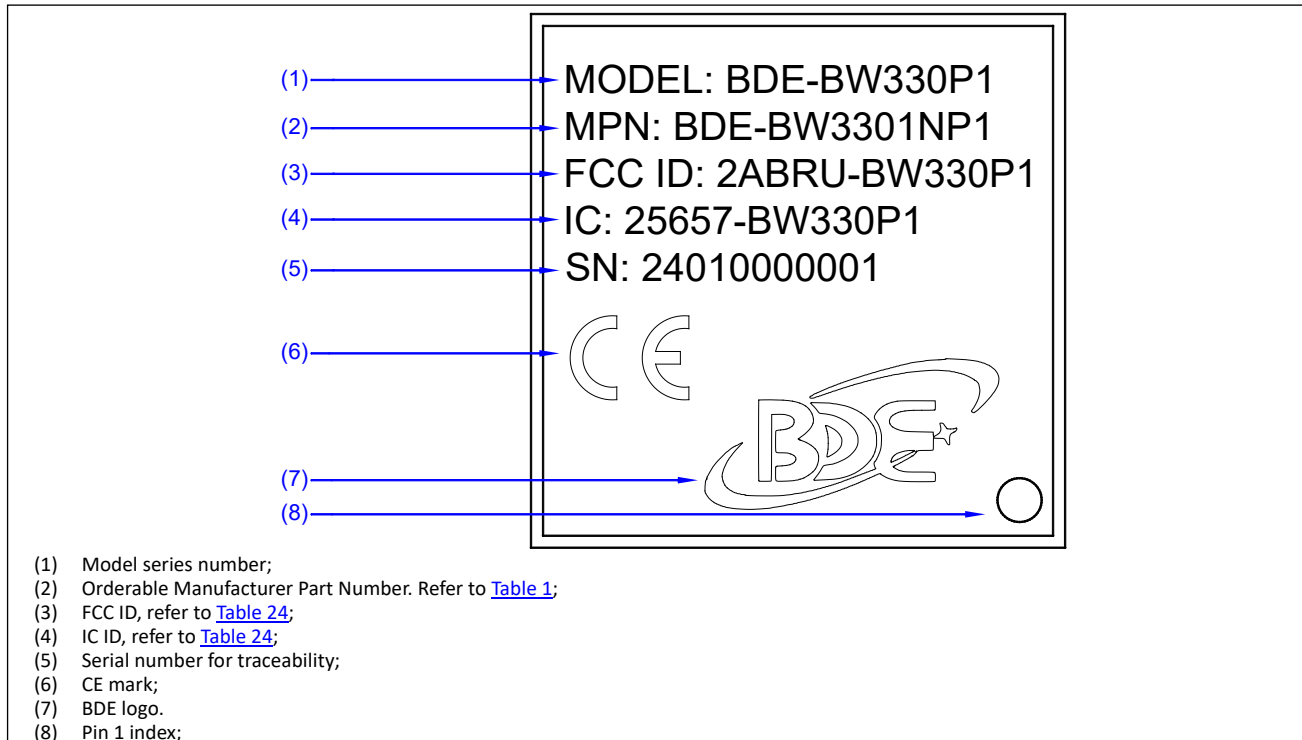


Figure 21. Module Marking

## 6.2. Packaging Information

### 6.2.1. Tape and Reel Package Information

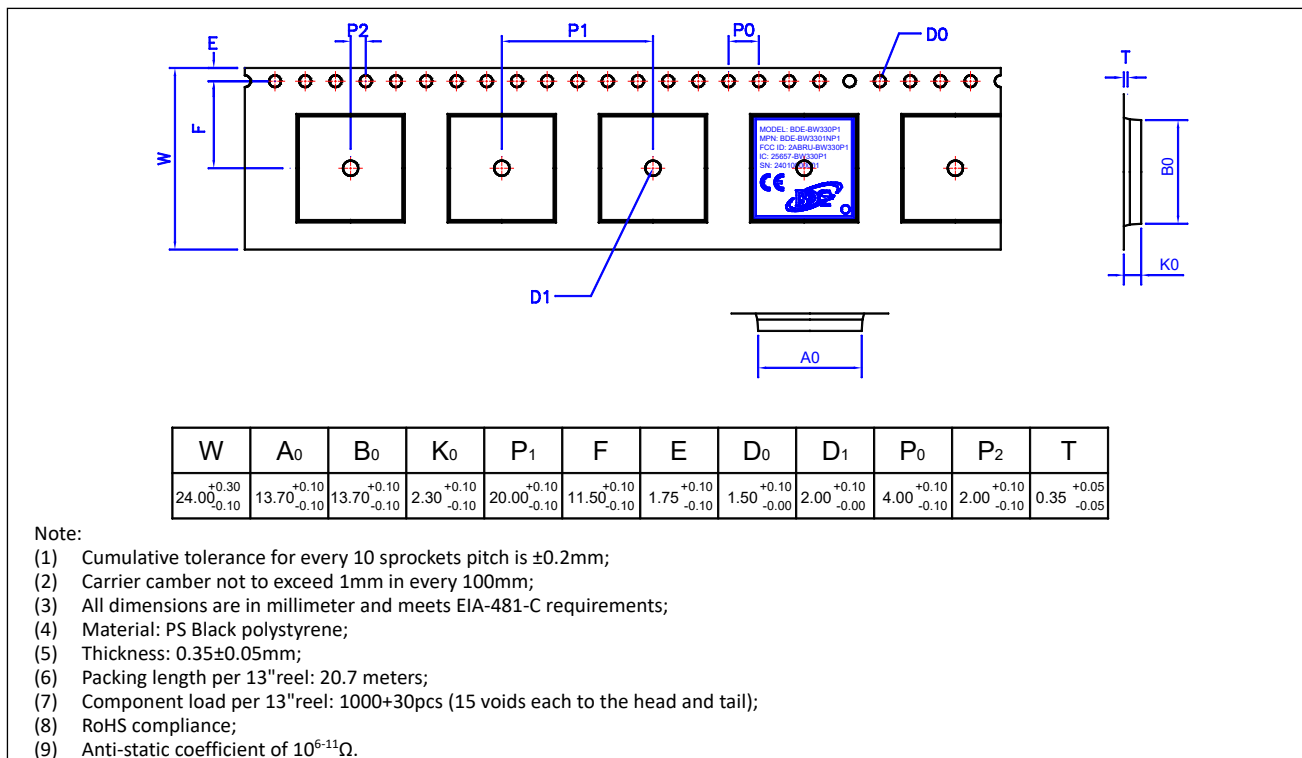


Figure 22. Carrier Tape Drawing for BDE-BW330XPX variants



## 6.2.2. Carton Information and Labeling

TBD

## 6.3. Assembly Instruction

### 6.3.1. Moisture Sensitive Level

The MSL (Moisture Sensitive Level) of the module is MSL-3. Handling guidelines are listed as below:

- (1) The floor life for MSL-3 device is 168 hours in ambient environment 30°C/60%RH. Before assembly, make sure to check if the modules are packaged with desiccant and humidity indicator card;
- (2) After the bag is opened, make sure to mount the modules within 168 hours at factory conditions (< 30°C/60% RH) or stored at <10% RH. Repackage is needed with new desiccant and humidity indicator card if the modules are not mounted before exceeding floor life;
- (3) If the card reads >10%, or the modules have been exposed for over 168 hours, the modules need to be baked before mounted. Recommended baking condition is 125°C for 8 hours.

### 6.3.2. Reflow Profile

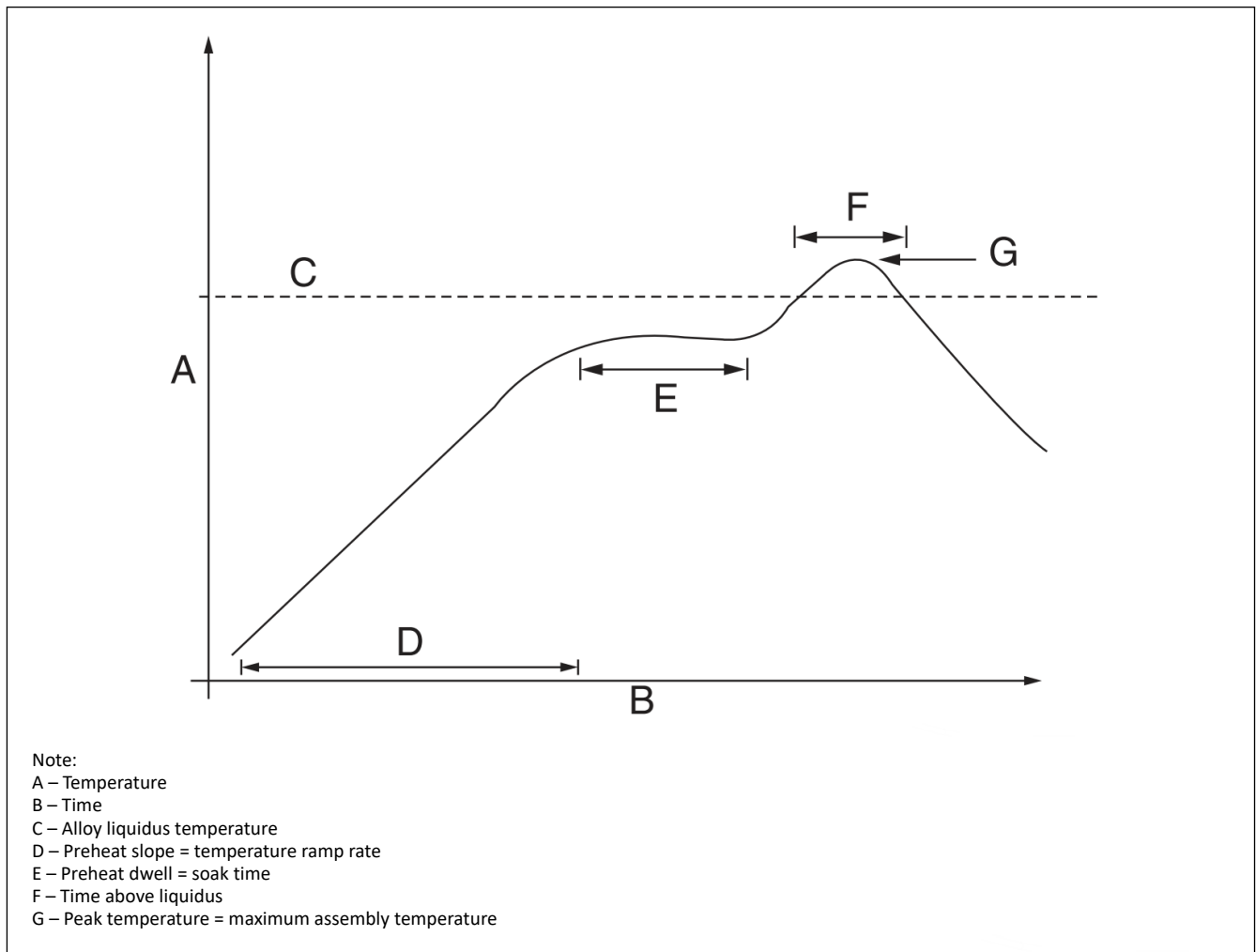


Figure 25. Thermal Profile Schematic

**Table 22. Reflow Profile Parameters** <sup>(1) (3)</sup>

Item	Temperature Range	Ramp Rate / Time
D, preheat zone	30°C ~ 175°C	2°C ~ 4°C per second
E, soak zone	150°C ~ 200°C	60 ~ 120 seconds
C, Alloy liquidus temperature	217°C ~ 220°C	-
F, reflow zone	230°C ~ 245°C	60 ~ 90 seconds
G, target maximum reflow temperature	250°C	-
Absolute peak temperature <sup>(2)</sup>	260°C	-

**Note:**

- (1) This is for Pb-free (SAC 305) paste. Different pastes require different profiles for optimum performance, so it is important to consult the paste manufacturer before developing the solder profile;
- (2) Exceed the absolute peak temperature for certain period, e.g. 20s might damage the device or affect the reliability;
- (3) It is recommend that the modules do not go through the reflow process more than one time.

### 6.3.3. Other Consideration

- (1) Ultrasonic cleaning process is discouraged for the modules as the process might damage the module permanently, especially for the crystal oscillator in the module.
- (2) Conformal coating is not allowed to this module. It will impact the reliability of the module once the coating flooded into the shield.

## 7. Certification

### 7.1. Bluetooth Qualification

#### 7.1.1. Bluetooth Qualification Information

The module series is listed on the Bluetooth SIG website as a qualified End Product, referencing a Controller and Host Subsystem combination. The detail information can be found in below table.

**Table 23. Bluetooth Qualification Information**

Declaration ID	Reference QDID	
TBD	Controller Subsystem	TBD
	Host Subsystem	TBD

#### 7.1.2. Bluetooth Qualification Process

Below Bluetooth qualification process is provided for customers when they are listing their end product referencing BDE module.

- (1) Go to <https://launchstudio.bluetooth.com/> and log in;
- (2) Select **Start the Bluetooth Qualification Process with No Required Testing**;
- (3) Project Basics:
  - (a) Enter your project name, it can be the product name or the product series name;
  - (b) Enter QDID that the product reference, in this case the QDID is XXXXX (TBD).
- (4) Product Declaration:
  - (a) Select the listing date. You can select a date that you want your product listed and go public, although the qualification will complete immediately after your submission.

- (b) Add every product that integrated with this module. You can add a series of individual product models that use the same design/module without any modification.
- (5) Declaration ID:
  - (a) Select a DID. If you don't have one, you need to purchase a DID for your product by clicking Pay Declaration Fee.
- (6) Review and Submit:
  - (a) Review all information that you have entered and make sure no mistakes;
  - (b) Tick all check boxes if you confirmed above information and add your name to the signature page;
  - (c) Click [Signature Confirmed – Complete Project & Submit Product\(s\) for Qualification](#).
- (7) The qualification will be done immediately and your product will be listed to the Bluetooth SIG website as per your required listed date in step (4).

For more information about listing your product to Bluetooth SIG, please visit below webpage:

<https://www.bluetooth.com/develop-with-bluetooth/qualification-listing/>

## 7.2. Regulatory Compliance

The module is certified for FCC, IC/ISED and ETSI/CE as listed in below table. More regions can be cover by request.

**Table 24. Certification Information**

Regulatory Body / Region	Standard	ID	MPN
FCC (USA)	TBD	2ABUR-BW330P1	BDE-BW3301NP1 BDE-BW3301UP1 BDE-BW3301AP1 BDE-BW3300NP1 BDE-BW3300UP1 BDE-BW3300AP1
		2ABUR-BW330P2	BDE-BW3300NP2 BDE-BW3300UP2
IC/ISED (Canada)	TBD	25657-BW330P1	BDE-BW3301NP1 BDE-BW3301UP1 BDE-BW3301AP1 BDE-BW3300NP1 BDE-BW3300UP1 BDE-BW3300AP1
		25657-BW330P2	BDE-BW3300NP2 BDE-BW3300UP2
ETSI/CE (Europe)	TBD	NA	

### 7.2.1. Certified Antennas

The module series has been tested and certified with three antennas, where BDE-BW330XAP1 variants utilize an integrated PCB trace antenna and BDE-BW330XUPX variants utilize an external whip antenna through U.FL connector and BDE-BW330XNPX utilize a ceramic chip antenna utilized in the EM board through the dedicated ANT pin of the module.

The characteristic of the three antennas are listed in below table.

**Table 25. Certified Antenna List**

Antenna Type	Frequency Range (MHz)	Gain (dBi)	Efficiency (%)	Note
PCB trace antenna	2402 ~ 2480	TBD	TBD	Integrated
Whip antenna	2402 ~ 2480	TBD	TBD	External
Ceramic chip antenna	2402 ~ 2480	TBD	TBD	External

Customers are encouraged to use the certified antennas in the case of external antenna options to reduce certification testing effort and risk of failing. If customer want to choose another antenna that fits their product, there are some scenarios that need to be considered.

If the external antenna is of the same antenna type and of equal or less gain compared to the ones listed in above table, and with similar in-band and out-of-band characteristic, then the antenna can be used with the module in USA and Canada where modular approval is applicable, as long as the spot-check testing of the new antenna with host is performed to verified that

it will not change the performance. However, in countries such as EU countries applying the ETSI standards where the modular approval is not applicable, the radiated emissions are always tested with the end product with any antennas.

If the external antenna is of a different type or with non-similar in-band and out-of-band characteristic, but still has equal gain or less gain compared to the above listed antennas. The new antenna can be added to the existing modular grant/certificate by filing a permissive change, C2PC (Class II Permissive Change) in case of FCC and ISED. The radiated emission testing is needed, but re-certification is not required.

In the case of the external antenna with higher gain than the peak gain listed in above table are very likely to require a full new end product certification. However, we recommended that you consult with your certification house to understand the correct approaches for your product case by case.

For the case where customer choose the certified antenna with BDE-LE2340R5KPN through the dedicated ANT pin of the module, the customer must copy the design exactly as the one that tested in the certification to comply with the requirement.

## 7.2.2. FCC Compliance

### 7.2.2.1. FCC Statement

This device complies with part 15 of the FCC rules. Operation is subject to the following two conditions:

- (1) This device may not cause harmful interference, and
- (2) This device must accept any interference received, including interference that may cause undesired operation.

### 7.2.2.2. FCC Caution

Any changes or modifications to this unit not expressly approved by BDE for compliance could void the user's authority to operate the equipment. The integrator will be responsible to satisfy SAR/RF Exposure requirements, when the module integrated into the host device.

### 7.2.2.3. Integration Instructions

#### **List of applicable FCC rules**

FCC Part 15.247

#### **Specific operational use conditions**

This transmitter/module and its antenna(s) must not be co-located or operating in conjunction with any transmitter. This information also extends to the host manufacturer's instruction manual.

#### **Limited module procedures**

Not applicable

#### **Trace antenna designs**

Not applicable

#### **RF exposure considerations**

This equipment complies with FCC RF radiation exposure limits set forth for an uncontrolled environment. This compliance to FCC radiation exposure limits for an uncontrolled environment, and minimum of 20cm separation between antenna and body (TBD). The host product manufacturer would provide the above information to end users in their end-product manuals.

#### **Antennas**

Refer to [Table 25](#)

#### **Label and compliance information**

The end product must carry a physical label or shall use e-labeling followed KDB784748D01 and KDB784748 stating "Contains Transmitter Module FCC ID: 2ABRU-BW330P1" or "Contains Transmitter Module FCC ID: 2ABRU-BW330P2" depending on which module is used.

**Information on test modes and additional testing requirements**

Contact BDE for more information

**Additional testing, Part 15 Subpart B disclaimer**

The modular transmitter is only FCC authorized for the specific rule parts (FCC Part 15.247) listed on the grant, and that the host product manufacturer is responsible for compliance to any other FCC rules that apply to the host not covered by the modular transmitter grant of certification. The final host product still requires Part 15 Subpart B compliance testing with the modular transmitter installed when contains digital circuitry.

(OEM) Integrator has to assure compliance of the entire end-product that includes the BDE-LE2340R5KP module. For 15 B (§15.107 and if applicable §15.109) compliance, the host manufacturer is required to show compliance with 15 while the module is installed and operating.

Furthermore the module should be transmitting and the evaluation should confirm that the module's intentional emissions (15C) are compliant (fundamental / out-of-band). Finally the integrator has to apply the appropriate equipment authorization (e.g. Verification) for the new host device per definition in §15.101. Integrator is reminded to assure that these installation instructions will not be made available to the end-user of the final host device.

## 7.2.3. IC/ISED Compliance

### 7.2.2.4. IC Statement

This device contains license-exempt transmitter(s)/receiver(s) that comply with Innovation, Science and Economic Development Canada's license-exempt RSS(s). Operation is subject to the following two conditions:

- (1) This device may not cause interference, and
- (2) This device must accept any interference, including interference that may cause undesired operation of the device.

L'émetteur/récepteur exempt de licence contenu dans le présent appareil est conforme aux CNR d'Innovation, Sciences et Développement économique Canada applicables aux appareils radio exempts de licence. L'exploitation est autorisée aux deux conditions suivantes :

- (1) L'appareil ne doit pas produire de brouillage;
- (2) L'appareil doit accepter tout brouillage radioélectrique subi, même si le brouillage est susceptible d'en compromettre le fonctionnement.

### 7.2.2.5. IC Caution

Any changes or modifications to this unit not expressly approved by BDE for compliance could void the user's authority to operate the equipment. The integrator will be responsible to satisfy SAR/RF Exposure requirements, when the module integrated into the host device.

### 7.2.2.6. Integration Instructions

**Label and compliance information**

The final host device, into which this RF module is integrated has to be labeled with an auxiliary label stating the IC of the RF module, such as "Contains transmitter module IC: 25657-2340R5KP".

**Informations sur l'étiquette et la conformité**

Le périphérique hôte final, dans lequel ce module RF est intégré "doit être étiqueté avec une étiquette auxiliaire indiquant le CI du module RF, tel que "Contient le module émetteur IC: 25657-2340R5KP".

### Radio Frequency Exposure Statement for IC

The device has been evaluated to meet general RF exposure requirements. The device can be used in mobile exposure conditions. The min separation distance is 20cm. (TBD)

### Déclaration d'exposition aux radiofréquences pour IC

L'appareil a été évalué pour répondre aux exigences générales en matière d'exposition aux RF. L'appareil peut être utilisé dans des conditions d'exposition mobiles. La distance de séparation minimale est de 20 cm. (TBD)

This radio transmitter [IC: 25657-BW330P1 or IC: 25657-BW330P2] has been approved by Innovation, Science and Economic Development Canada to operate with the antenna types listed in [Table 31](#), with the maximum permissible gain indicated. Antenna types not included in this list that have a gain greater than the maximum gain indicated for any type listed are strictly prohibited for use with this device.

Cet émetteur radio [IC: 25657-BW330P1 or IC: 25657-BW330P2] a été approuvé par Innovation, Sciences et Développement économique Canada pour fonctionner avec les types d'antenne énumérés ci-dessous, avec le gain maximal admissible indiqué. Les types d'antenne non inclus dans cette liste qui ont un gain supérieur au gain maximum indiqué pour tout type répertorié sont strictement interdits pour une utilisation avec cet appareil.

#### 7.2.2.7. ETSI/CE Compliance

The BDE-LE2340R5KP module is certified with required EU radio and EMC directives. See [Table 30](#) for detailed standards the module complies with, or refer to UK Declaration of Conformity.

## 8. Ordering Information

Table 26. Ordering Information

Orderable Part Number	Description	Size (mm)	Core Chip	Shipping Form	MOQ
BDE-BW3301NP1	Wi-Fi 6 2.4-GHz SISO & BLE 5.4, Single Antenna Port with ANT Pin	13.4 x 13.3 x 2	CC3301	Tape & Reel	1K
BDE-BW3301UP1	Wi-Fi 6 2.4-GHz SISO & BLE 5.4, Single Antenna Port with U.FL Connector	18.4 x 13.3 x 2	CC3301	Tape & Reel	1K
BDE-BW3301AP1	Wi-Fi 6 2.4-GHz SISO & BLE 5.4, Single Antenna Port with Integrated PCB Trace Antenna	18.4 x 13.3 x 2	CC3301	Tape & Reel	1K
BDE-BW3301NP2	Wi-Fi 6 2.4-GHz SISO & BLE 5.4, Dual Antenna Port with Antenna Diversity, with ANT Pins	13.4 x 13.3 x 2	CC3301	Tape & Reel	1K
BDE-BW3301UP2	Wi-Fi 6 2.4-GHz SISO & BLE 5.4, Dual Antenna Port with Antenna Diversity, with U.FL Connectors	18.4 x 13.3 x 2	CC3301	Tape & Reel	1K
BDE-BW3300NP1	Wi-Fi 6 2.4-GHz SISO, Single Antenna Port with ANT Pin	13.4 x 13.3 x 2	CC3300	Tape & Reel	1K
BDE-BW3300UP1	Wi-Fi 6 2.4-GHz SISO, Single Antenna Port with U.FL Connector	18.4 x 13.3 x 2	CC3300	Tape & Reel	1K
BDE-BW3300AP1	Wi-Fi 6 2.4-GHz SISO, Single Antenna Port with Integrated PCB Trace Antenna	18.4 x 13.3 x 2	CC3300	Tape & Reel	1K
BDE-BW3300NP2	Wi-Fi 6 2.4-GHz SISO, Dual Antenna Port with Antenna Diversity, with ANT Pins	13.4 x 13.3 x 2	CC3300	Tape & Reel	1K
BDE-BW3300UP2	Wi-Fi 6 2.4-GHz SISO, Dual Antenna Port with Antenna Diversity, with U.FL Connectors	18.4 x 13.3 x 2	CC3300	Tape & Reel	1K

## 9. Revision History

**Table 27. Ordering Information**

Revision	Date	Description
V0.1	16-Dec-2022	Preliminary, draft
V0.2	13-Feb-2023	Updated pinout, added reference design
V0.3	29-Mar-2023	Added more information
V0.4	14-Jul-2023	Corrected some editorial mistakes, updated reference design
V0.5	30-Jan-2024	Added detailed information

**Note:**

---

The latest datasheet can be found with this [Link](#).

---

## Important Notice and Disclaimer

The information contained herein is believed to be reliable. BDE makes no warranties regarding the information contained herein. BDE assumes no responsibility or liability whatsoever for any of the information contained herein. BDE assumes no responsibility or liability whatsoever for the use of the information contained herein. The information contained herein is provided "AS IS, WHERE IS" and with all faults, and the entire risk associated with such information is entirely with the user. All information contained herein is subject to change without notice. Customers should obtain and verify the latest relevant information before placing orders for BDE products. The information contained herein or any use of such information does not grant, explicitly or implicitly, to any party any patent rights, licenses, or any other intellectual property rights, whether with regard to such information itself or anything described by such information.

13B

## Contact

BDE Technology Inc.

USA: 67 E Madison St, # 1603A, Chicago, IL 60603, US

Tel: +1-312-379-9589

Website: <http://www.bdecomm.com>

Email: [info@bdecomm.com](mailto:info@bdecomm.com)

China: B2-403, 162 Science Avenue, Huangpu District, Guangzhou 510663, China

Tel: +86-20-28065335

Website: <http://www.bdecomm.com>

Email: [info@bdecomm.com](mailto:info@bdecomm.com)