

## preLink RJ45 plug, IP20 Cat.6A L-35°

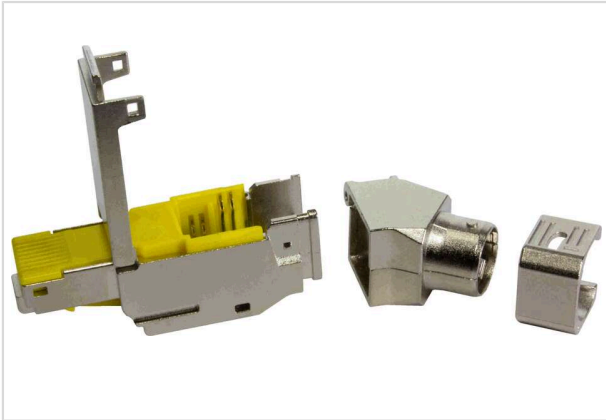


Image is for illustration purposes only. Please refer to product description.

Part number	20 82 101 0022
Specification	preLink RJ45 plug, IP20 Cat.6A L-35°
HARTING eCatalogue	<a href="https://harting.com/20821010022">https://harting.com/20821010022</a>

### Identification

Category	Connectors
Series	preLink®
Element	Connector
Specification	RJ45 35° angled
Features	Suitable for all PoE versions

### Version

Termination method	preLink® IDC insulation displacement termination
Gender	Male
Shielding	Shielded
Number of contacts	8
Coding	RJ45
Details	This item requires additional a termination block. Please select these under "Matching Products".

### Technical characteristics

Conductor cross-section	0.1 ... 0.12 mm <sup>2</sup> 0.22 ... 0.32 mm <sup>2</sup>
Conductor cross-section [AWG]	AWG 27 ... AWG 26 AWG 24 ... AWG 22
Transmission characteristics	Cat. 6 <sub>A</sub> Class E <sub>A</sub> up to 500 MHz



Pushing Performance  
Since 1945

## Technical characteristics

Data rate	10 Mbit/s
	100 Mbit/s
	1 Gbit/s
	2.5 Gbit/s
	5 Gbit/s
	10 Gbit/s
Limiting temperature	-40 ... +85 °C
Relative humidity	95 % Non-condensing (operation)
Mating cycles	≥750
Degree of protection acc. to IEC 60529	IP20
Cable diameter	5 ... 9 mm
Vibration resistance	10-500 Hz, 0.35 mm / 50 m/s <sup>2</sup> , 2h/axis 5.72 m/s <sup>2</sup> acc. to IEC 61373 Category 1 Class B
Shock resistance	50 g / 30 ms, 3 shocks / axis and direction acc. to IEC 61373 Category 1 Class B

## Material properties

Material (insert)	Zinc die-cast, nickel-plated
RoHS	compliant
ELV status	compliant
China RoHS	e
REACH Annex XVII substances	Not contained
REACH ANNEX XIV substances	Not contained
REACH SVHC substances	Not contained
California Proposition 65 substances	Not contained

## Specifications and approvals

UL / CSA	UL 1977 ECBT2.E102079 CSA-C22.2 No. 182.3 ECBT8.E102079
Approvals	DNV GL
PROFINET	Yes

## Commercial data

Packaging size	1
Net weight	26.46 g
Country of origin	Latvia
European customs tariff number	85366990



**Pushing Performance**  
Since 1945

## Commercial data

GTIN	5713140224223
ETIM	EC002636
eCl@ss	27440114 Rectangular connector (for field assembly)