

## Han TC200 female contact 16mm<sup>2</sup>

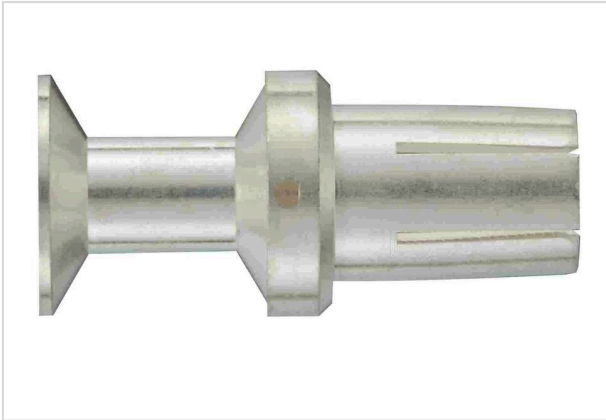


Image is for illustration purposes only. Please refer to product description.

Part number	09 11 000 6250
Specification	Han TC200 female contact 16mm <sup>2</sup>
HARTING eCatalogue	<a href="https://harting.com/09110006250">https://harting.com/09110006250</a>

### Identification

Category	Contacts
Series	TC 200
Type of contact	Crimp contact

### Version

Termination method	Crimp termination
Gender	Female
Manufacturing process	Turned contacts

### Technical characteristics

Conductor cross-section	16 mm <sup>2</sup>
Rated current	≤200 A
Contact resistance	≤0.3 mΩ
Limiting temperature	-40 ... +125 °C
Mating cycles	≥500

### Material properties

Material (contacts)	Copper alloy
Surface (contacts)	Silver plated
RoHS	compliant with exemption
RoHS exemptions	6(c): Copper alloy containing up to 4 % lead by weight
ELV status	compliant with exemption
China RoHS	50



**Pushing Performance**  
Since 1945

## Material properties

REACH Annex XVII substances	Not contained
REACH ANNEX XIV substances	Not contained
REACH SVHC substances	Yes
REACH SVHC substances	Lead
ECHA SCIP number	b51e5b97-eeb5-438b-8538-f1771d43c17d
California Proposition 65 substances	Yes
California Proposition 65 substances	Lead Nickel

## Specifications and approvals

Specifications	IEC 60664-1 IEC 61984
----------------	--------------------------

## Commercial data

Packaging size	2
Net weight	24.74 g
Country of origin	Germany
European customs tariff number	85359000
GTIN	5713140188327
ETIM	EC000796
eCl@ss	27440204 Contact for industrial connectors